

PacWave11 Tsunami Exercise

Aleutian Islands Mw=9 Earthquake and Tsunami Scenario

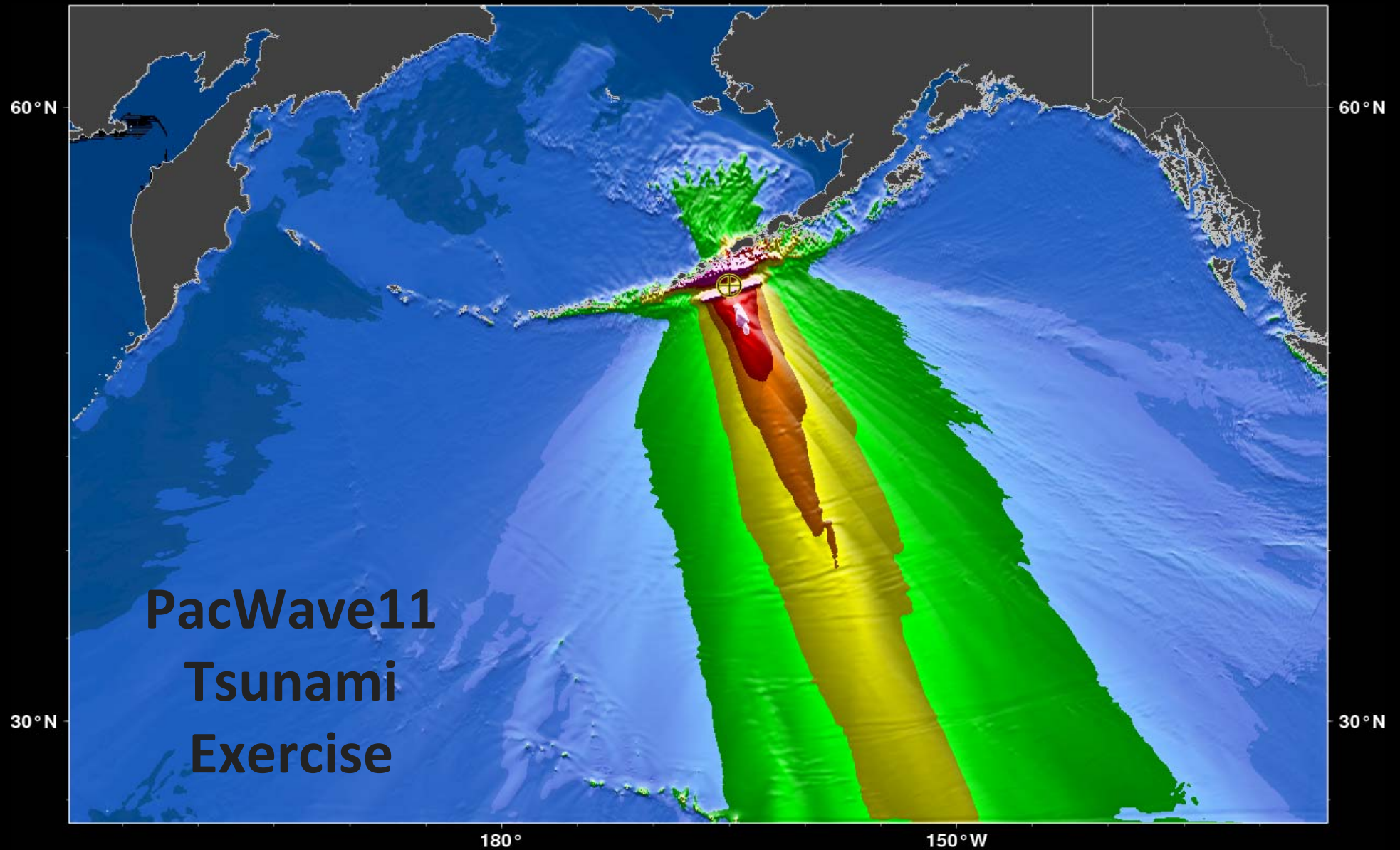
Draft Experimental Maps

PRODUCT #01

**would be issued at 1810 UTC,
10 minutes after the earthquake, and
includes the following 3 maps as part
of the 1st product suite.**

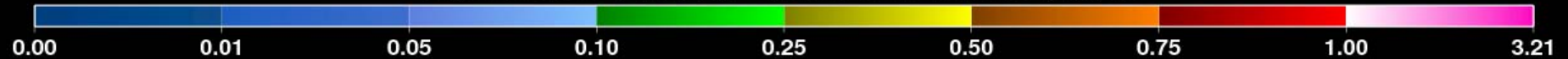
**To provide a fast product,
the size of the forecast area
for Product #01 is limited.
The whole Pacific forecast is in
Product #02.**

Initial Preliminary Mw=8.4

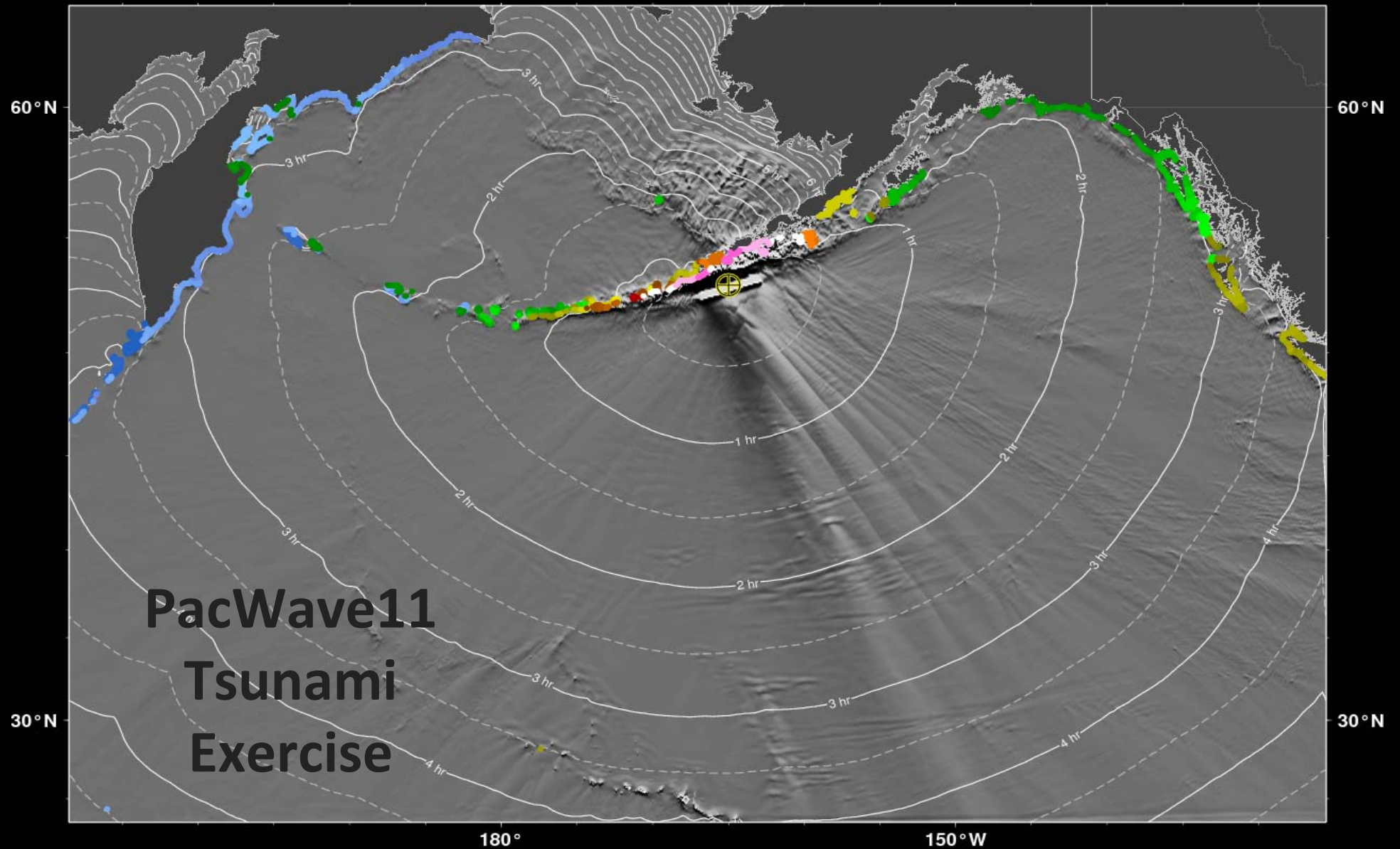


PacWave11
Tsunami
Exercise

PREDICTED TSUNAMI WAVE AMPLITUDE (meters)



EQ : [53.0, -165.0, 20], Mag=8.4



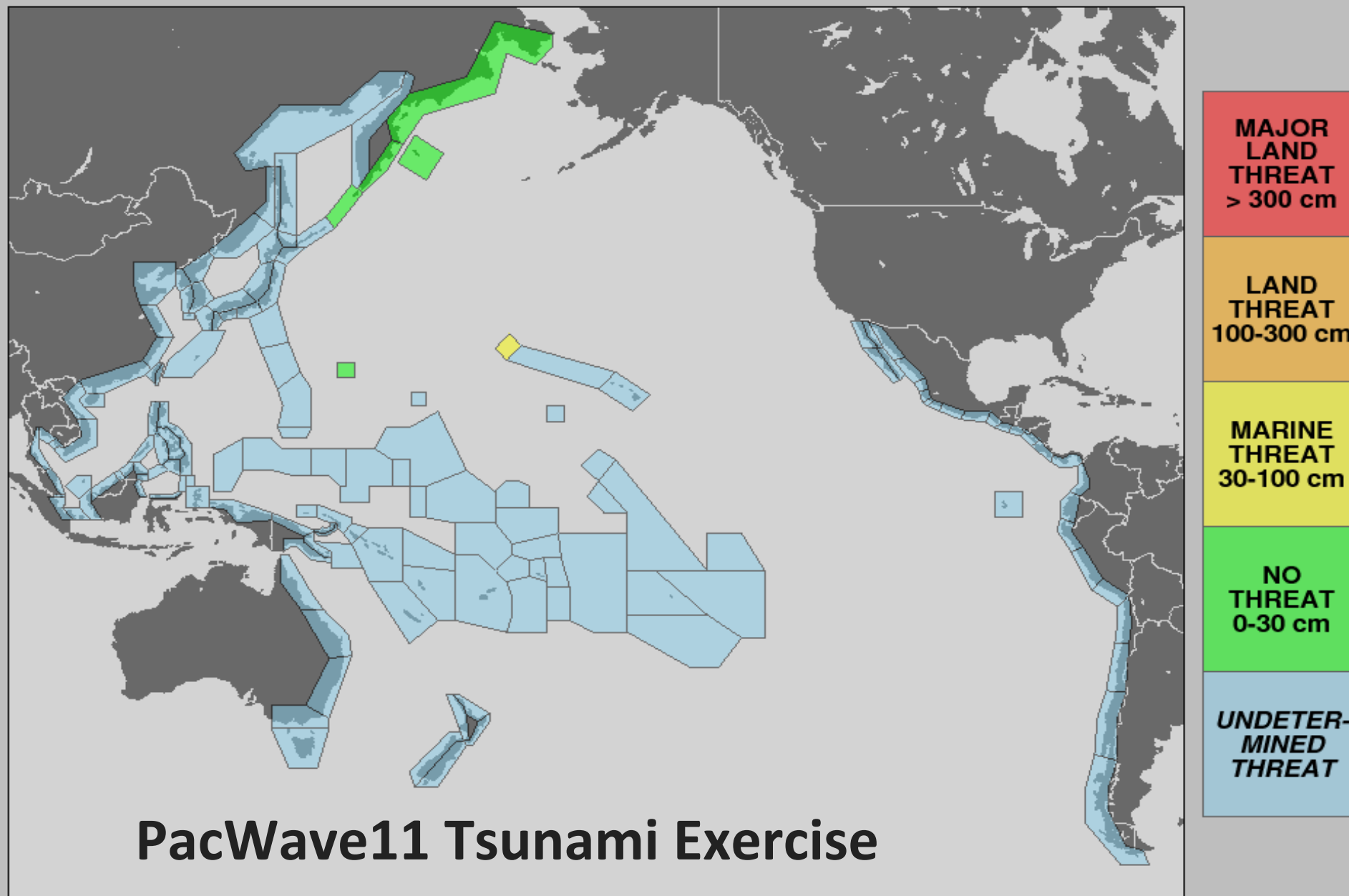
**PacWave11
Tsunami
Exercise**

PREDICTED TSUNAMI WAVE AMPLITUDE (meters)



EQ : [53.0, -165.0, 20], Mag=8.4

PTWC Tsunami Zone Forecast Number 01 - Issued 11/09/2011 at 1810 UTC



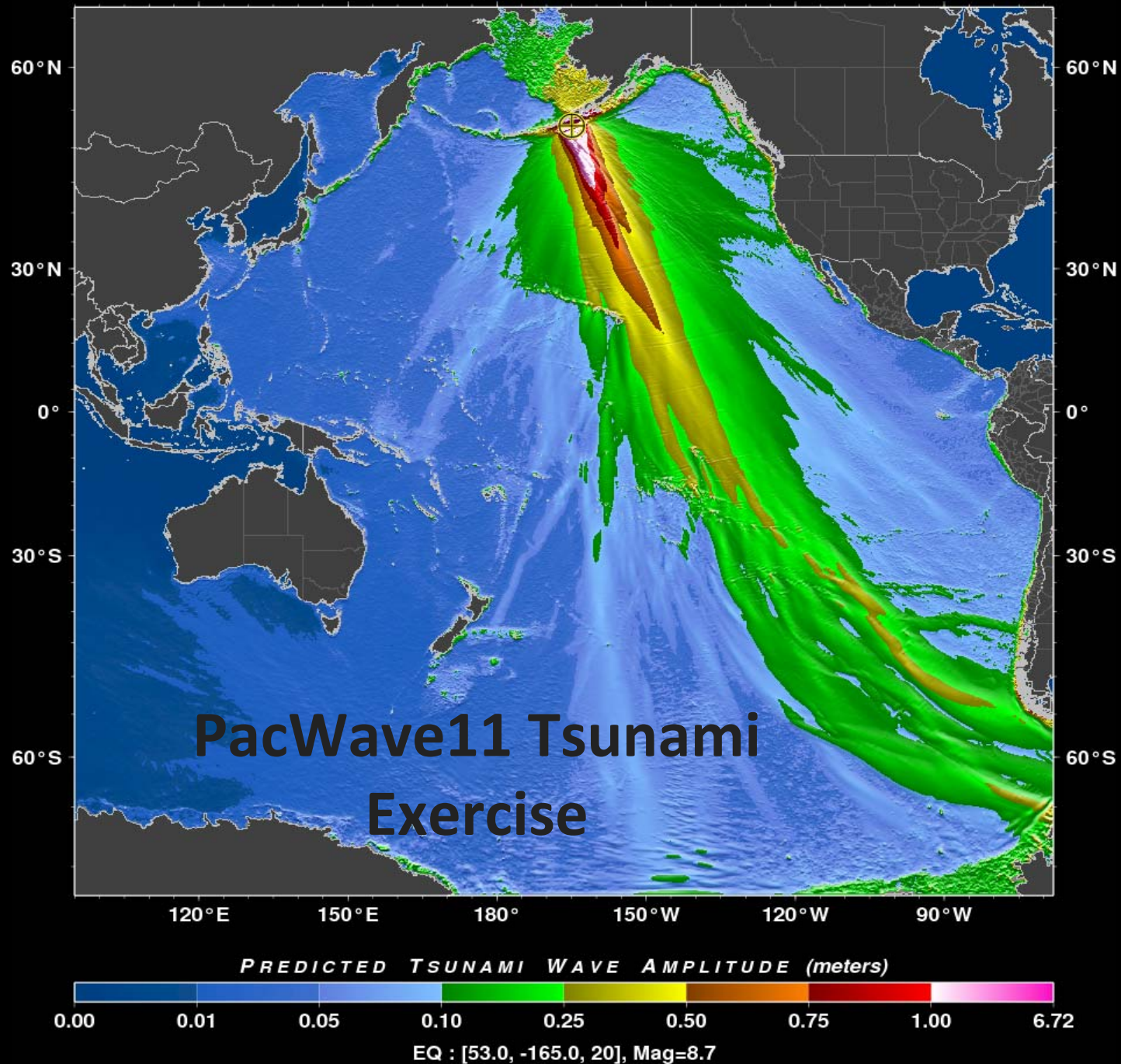
PacWave11 Tsunami Exercise

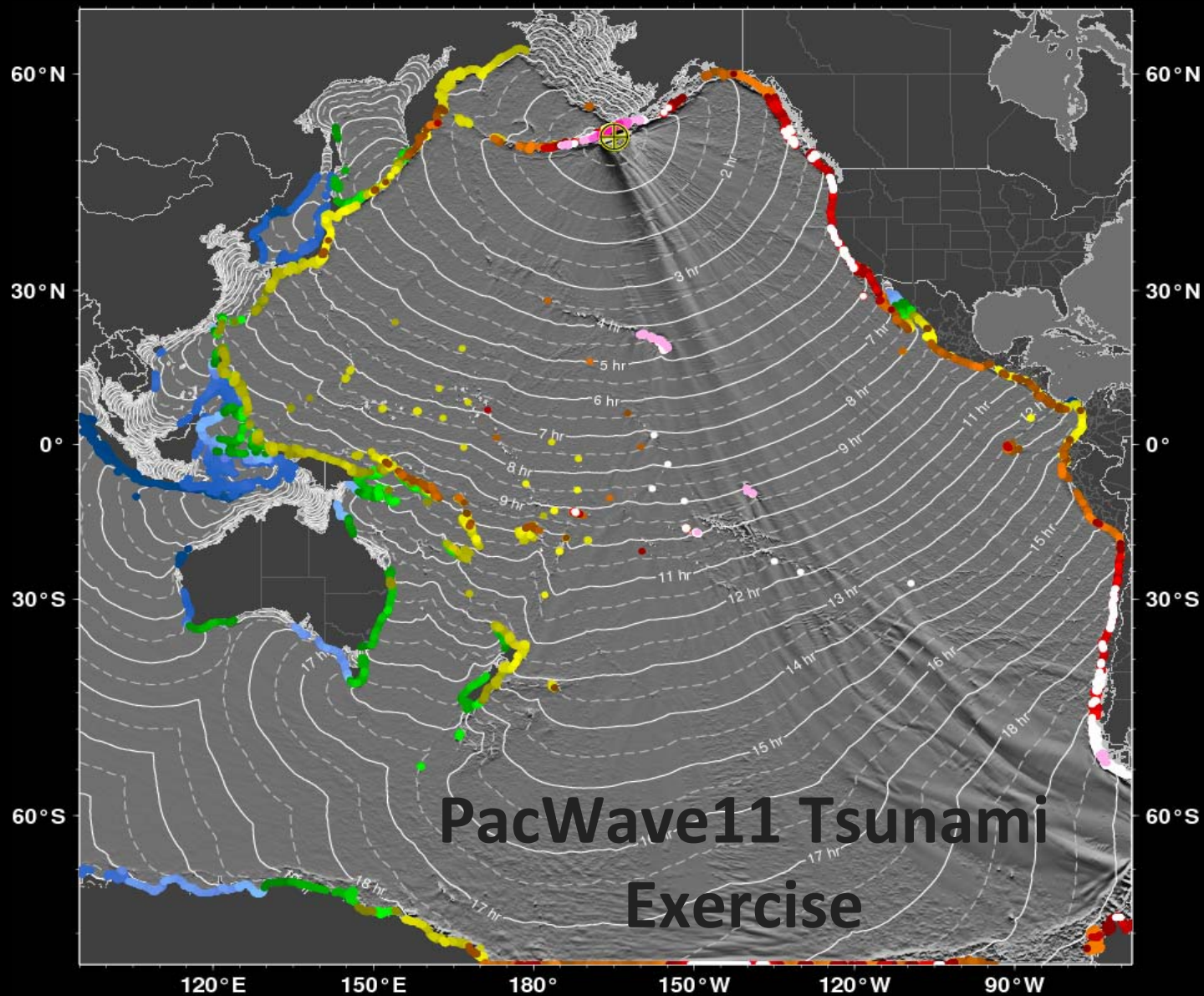
Earthquake: 11/09/2011 1800 UTC 53.0°N 165.0°W h=20km Mw=8.4

PRODUCT #02

**would be issued at 1845 UTC,
45 minutes after the earthquake, and
includes the following 3 maps as part
of the 2nd product suite.**

Updated Mw=8.7



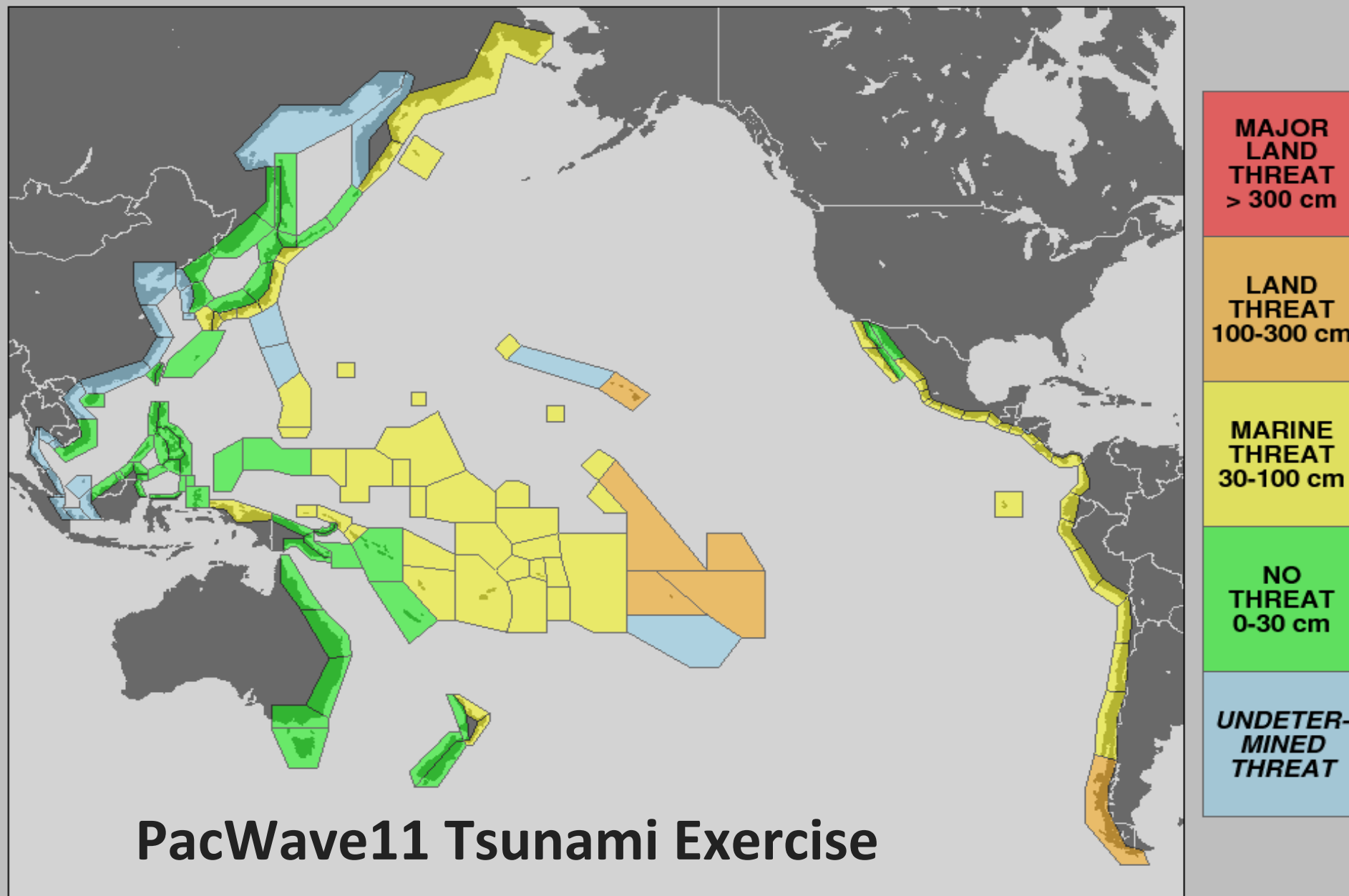


PREDICTED TSUNAMI WAVE AMPLITUDE (meters)



EQ : [53.0, -165.0, 20], Mag=8.7

PTWC Tsunami Zone Forecast Number 02 - Issued 11/09/2011 at 1845 UTC

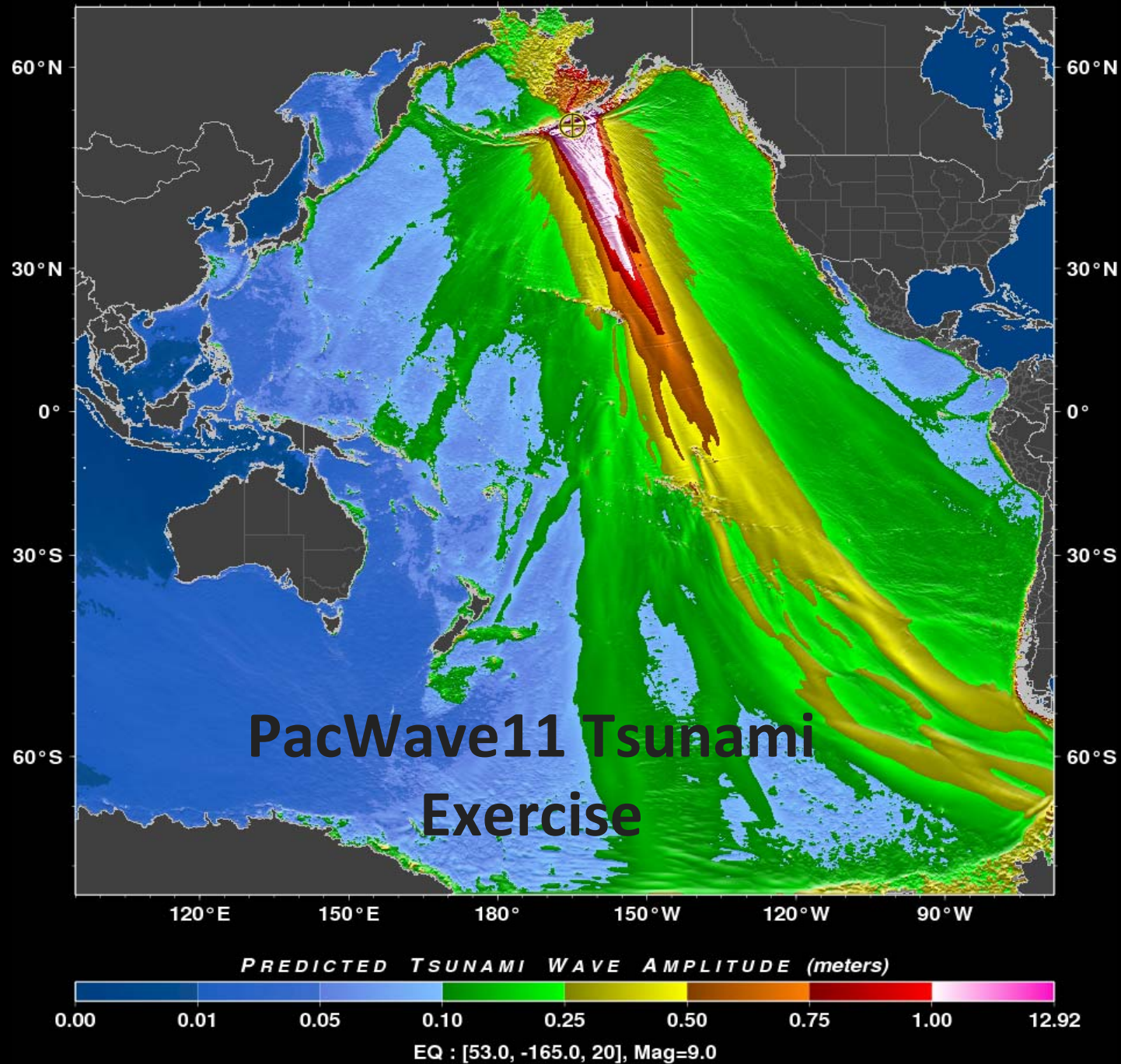


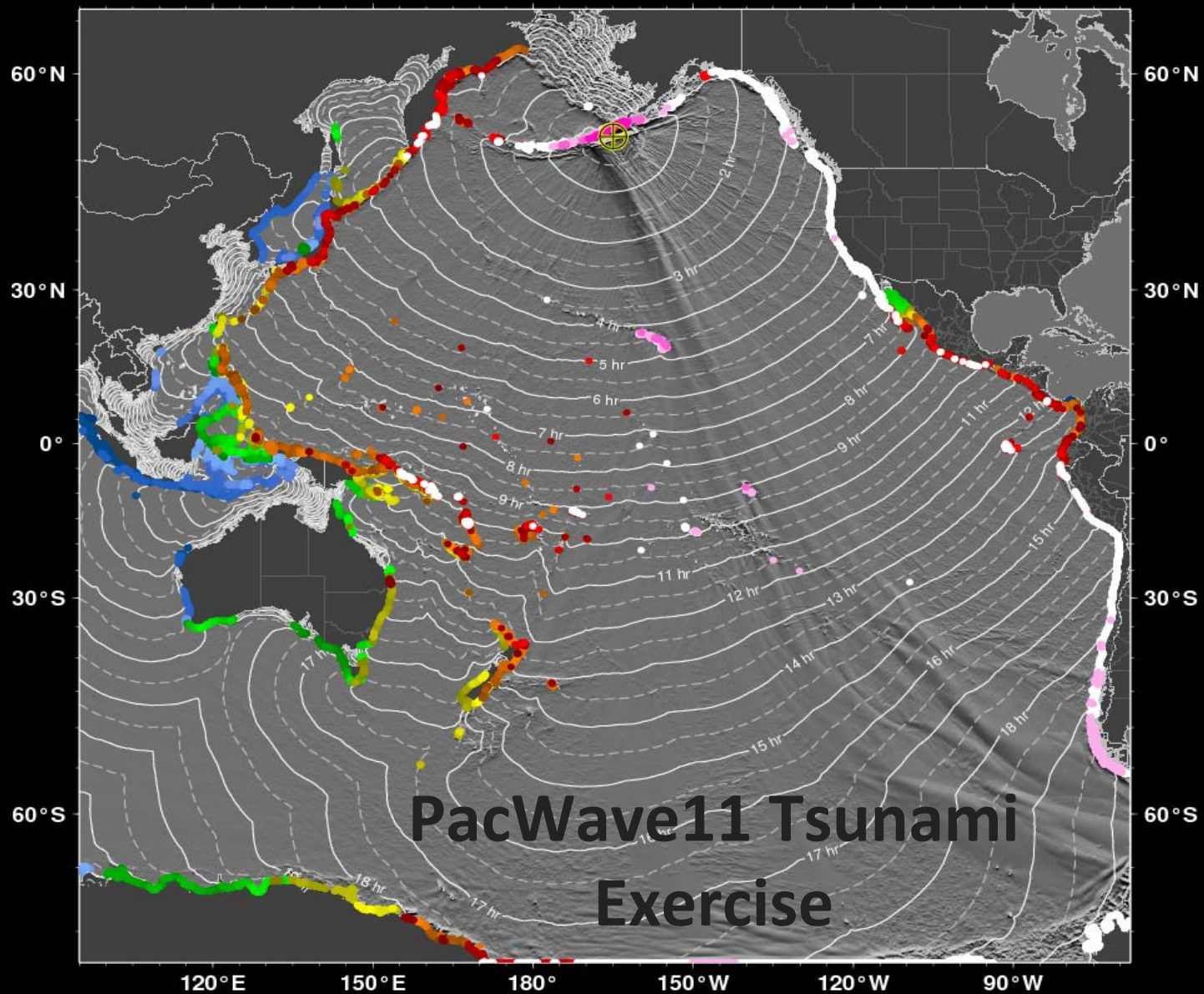
Earthquake: 11/09/2011 1800 UTC 53.0°N 165.0°W h=20km Mw=8.7

PRODUCT #03
would be issued at 1945 UTC,
105 minutes after the earthquake,
and includes the following 3 maps as
part of the 3rd product suite.

Updated Mw=9.0

The maps do not change further.



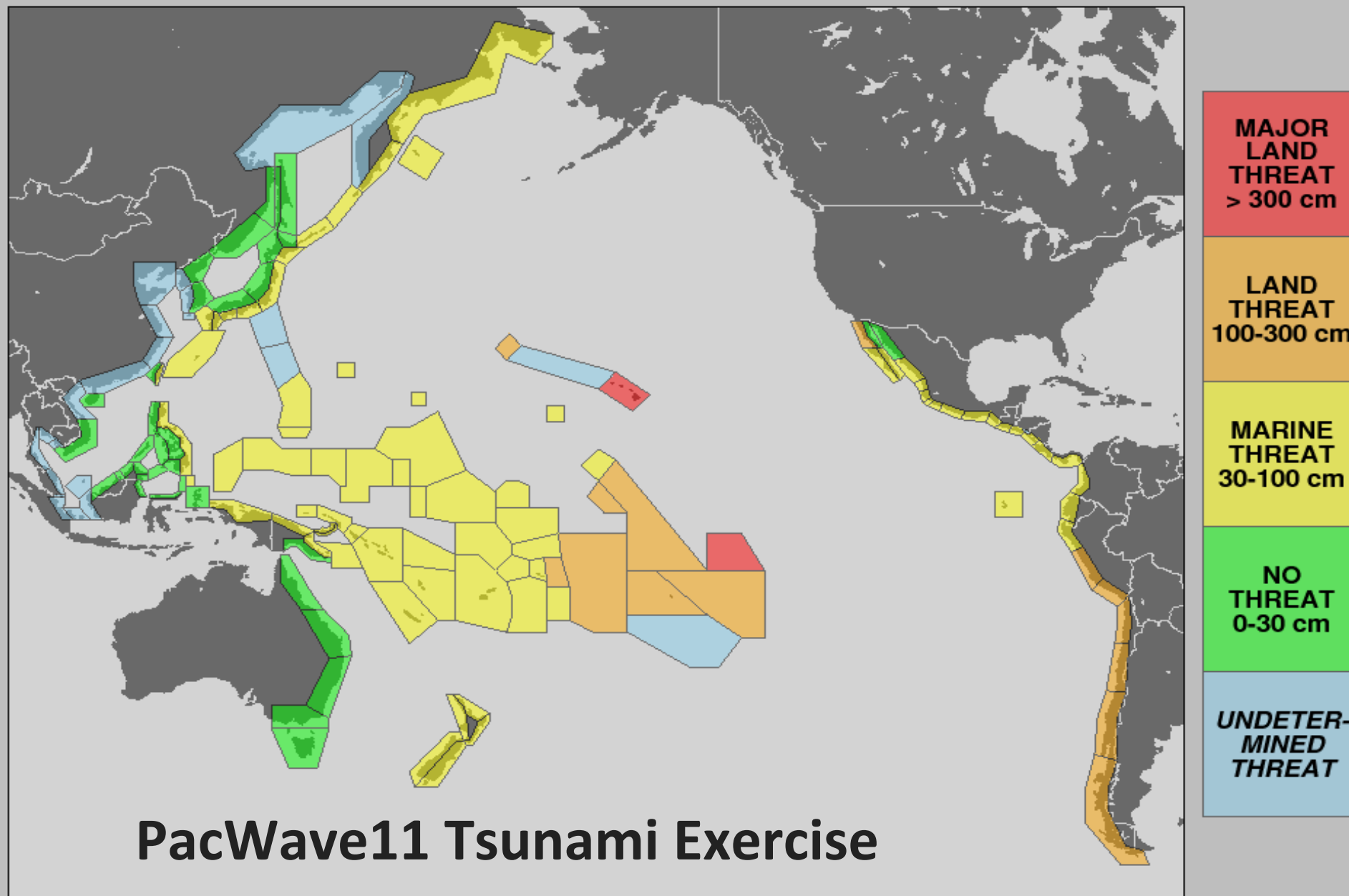


PREDICTED TSUNAMI WAVE AMPLITUDE (meters)



EQ : [53.0, -165.0, 20], Mag=9.0

PTWC Tsunami Zone Forecast Number 03 - Issued 11/09/2011 at 1945 UTC



Earthquake: 11/09/2011 1800 UTC 53.0°N 165.0°W h=20km Mw=9.0