

PacWave11 Tsunami Exercise

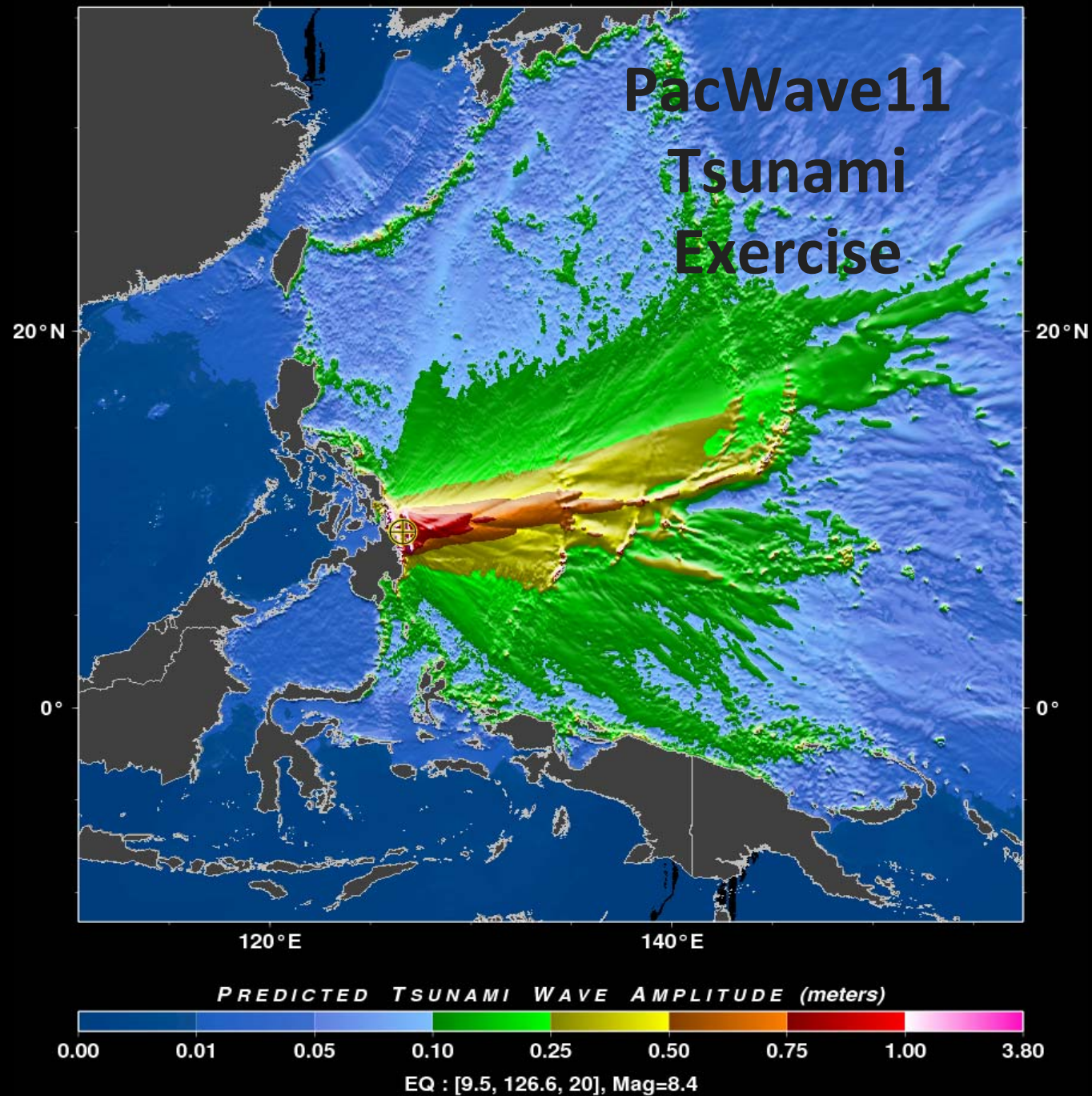
**Philippine Trench Mw=9 Earthquake
and Tsunami Scenario**

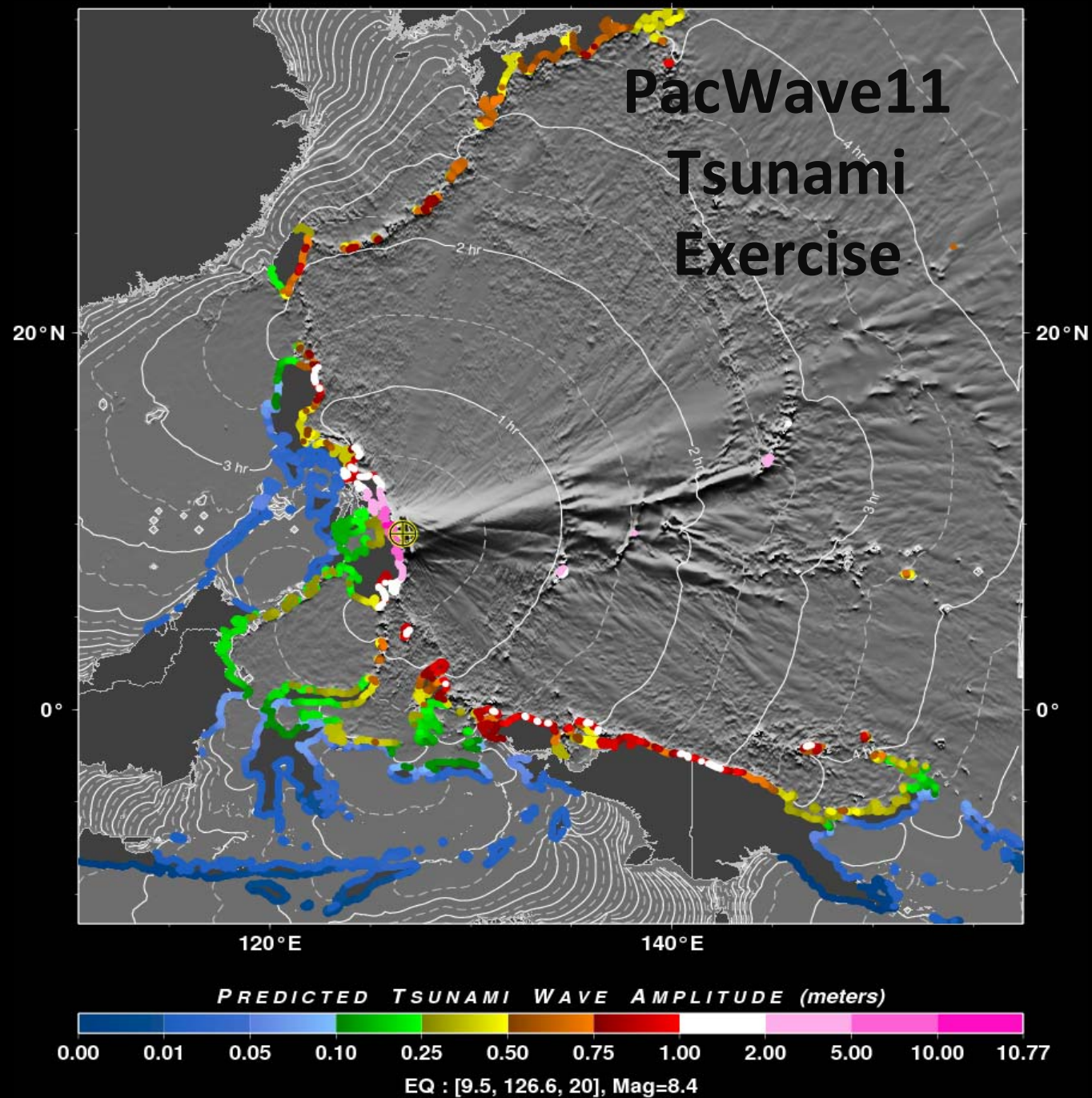
Draft Experimental Maps

PRODUCT #01
would be issued at 0008 UTC,
8 minutes after the earthquake, and includes
the following 3 maps as part of the 1st product
suite.

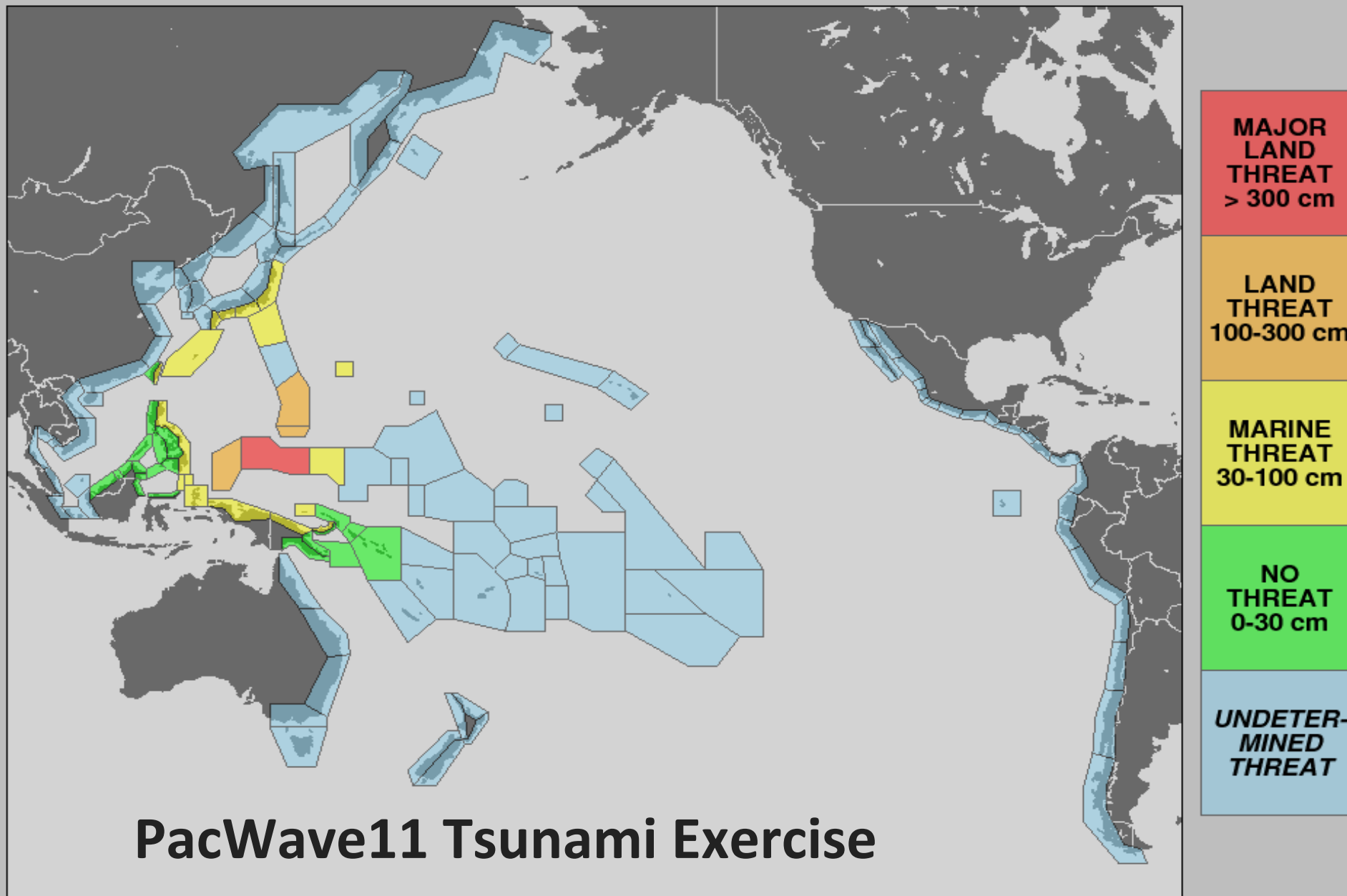
To provide a fast product,
the size of the forecast area
for Product #01 is limited.
The whole Pacific forecast is in Product #02.

Initial Preliminary Mw=8.4





PTWC Tsunami Threat Level Forecast Number 01 - Issued 11/10/2011 at 0008UTC



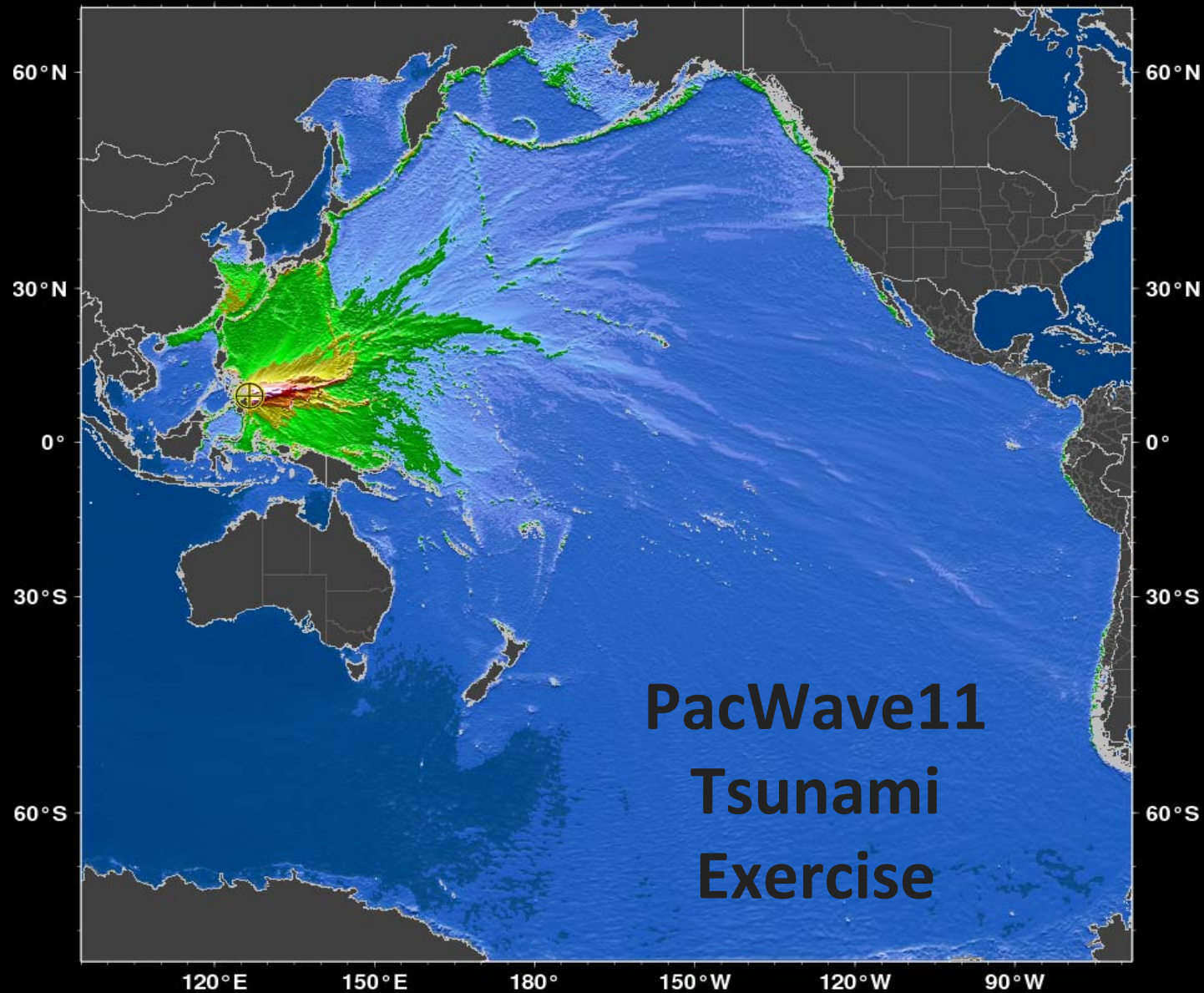
Earthquake: 11/10/2011 0000 UTC 9.5°N 126.6°E h=20km Mw=8.4

PRODUCT #02

**would be issued at 0045 UTC,
45 minutes after the earthquake, and
includes the following 3 maps as part
of the 2nd product suite.**

Updated Mw=8.7

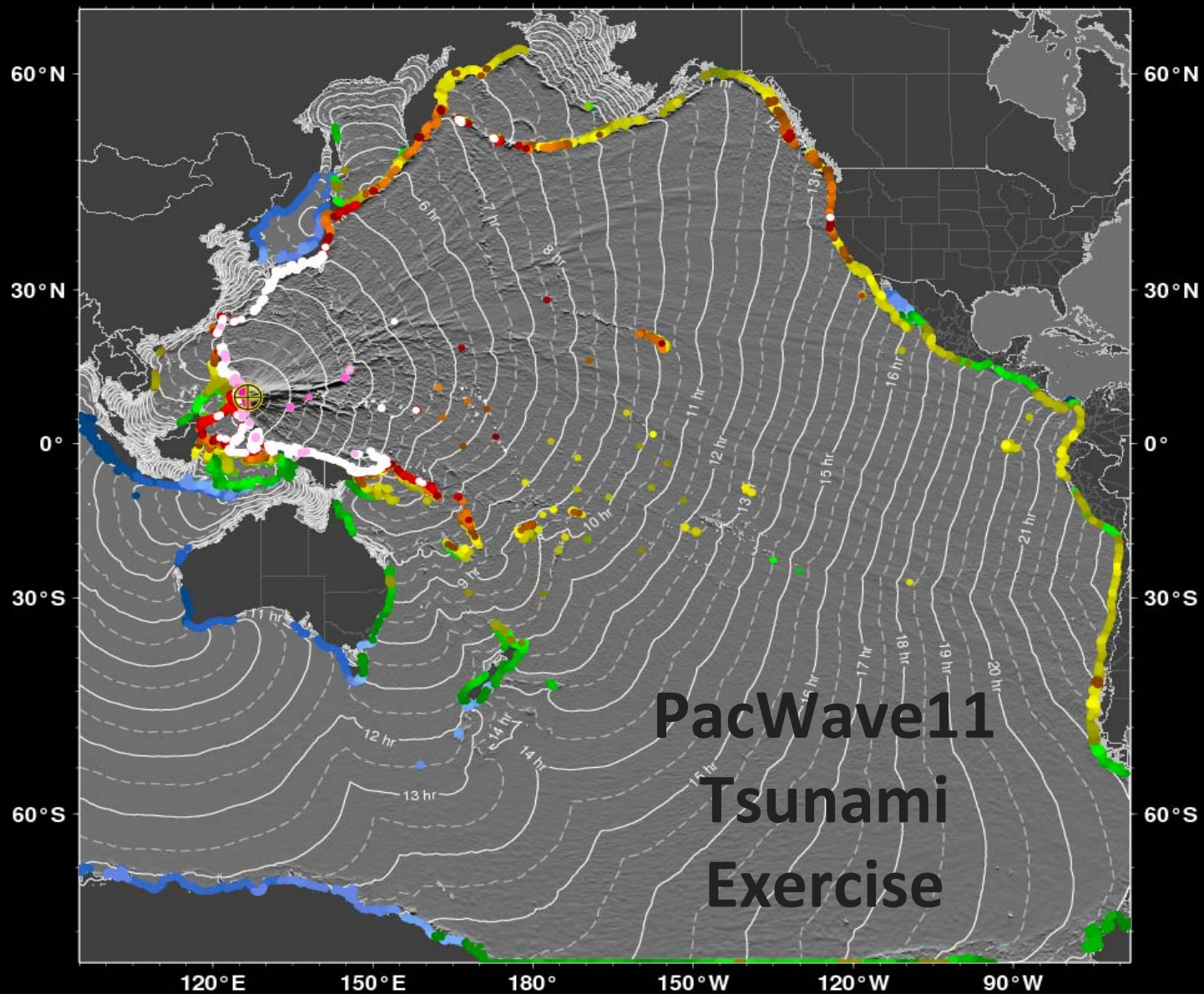
PTWC Deep-Ocean Tsunami Forecast Number 02 – Issued 11/10/2011 0045 UTC



PREDICTED TSUNAMI WAVE AMPLITUDE (meters)



EQ : [9.5, 126.6, 20], Mag=8.7

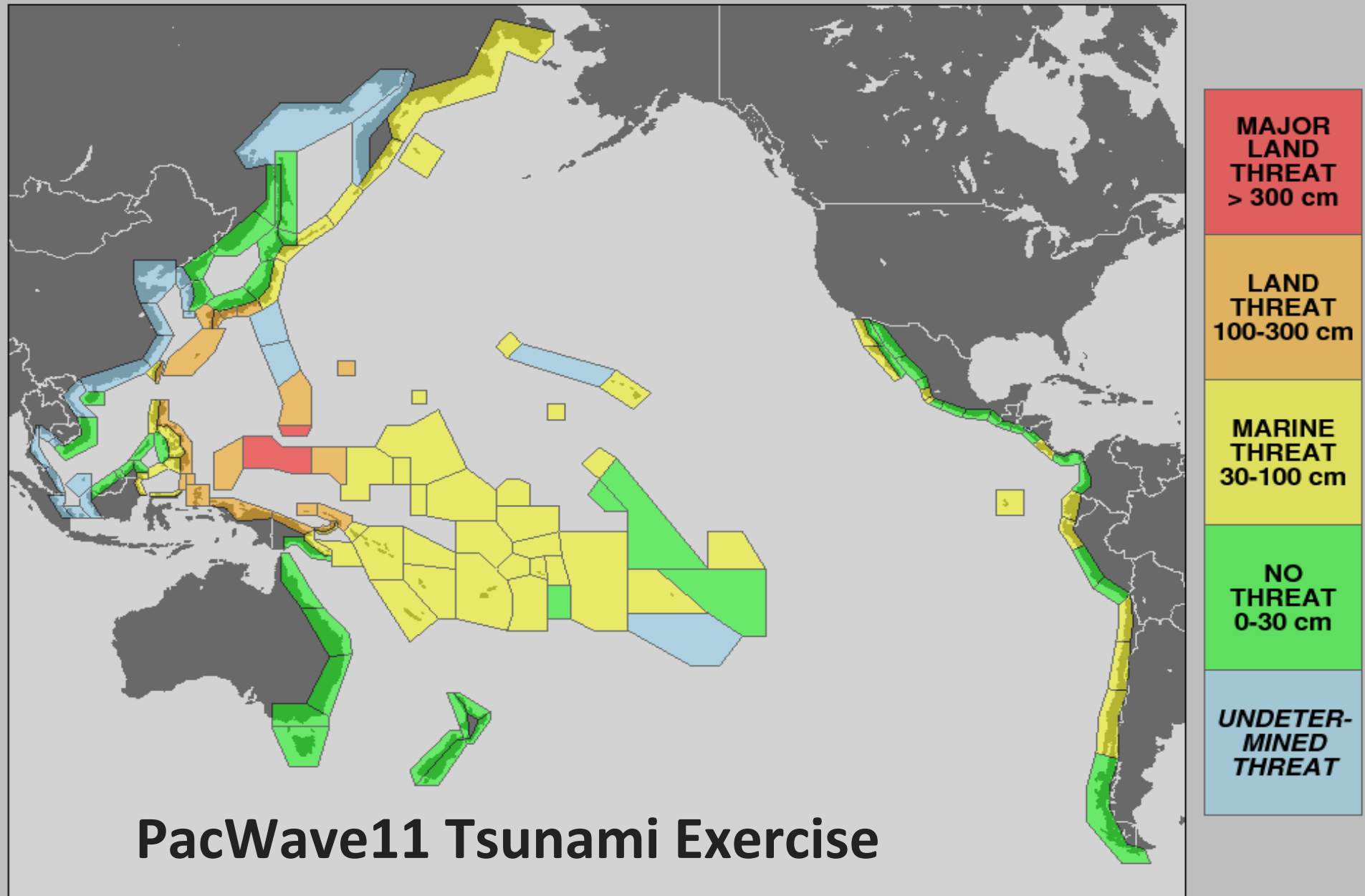


PREDICTED TSUNAMI WAVE AMPLITUDE (meters)

0.00 0.01 0.05 0.10 0.25 0.50 0.75 1.00 2.00 5.00 10.00 16.73

EQ : [9.5, 126.6, 20], Mag=8.7

PTWC Tsunami Threat Level Forecast Number 02 - Issued 11/10/2011 at 0045 UTC



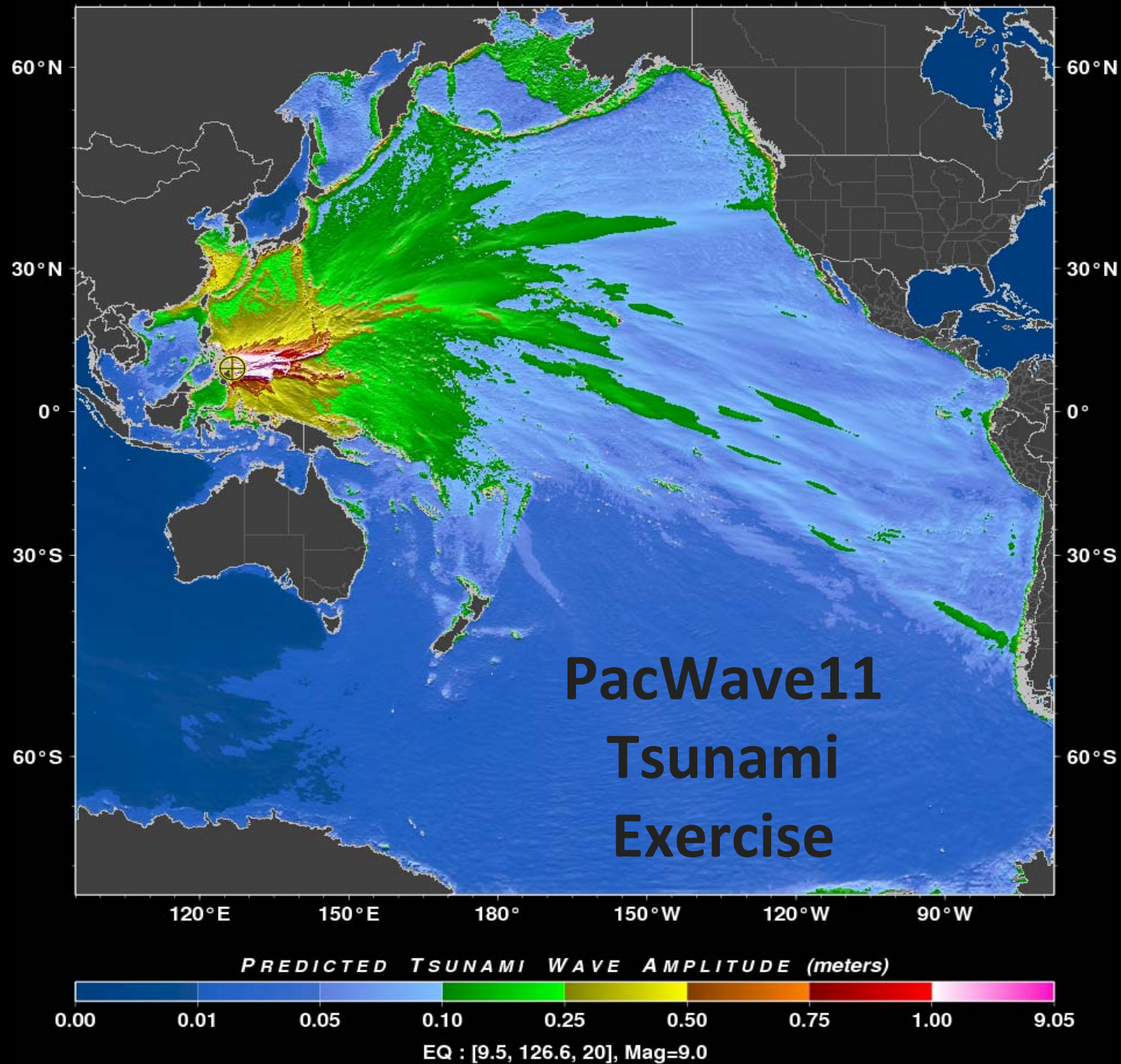
Earthquake: 11/10/2011 0000 UTC 9.5°N 126.6°E h=20km Mw=8.7

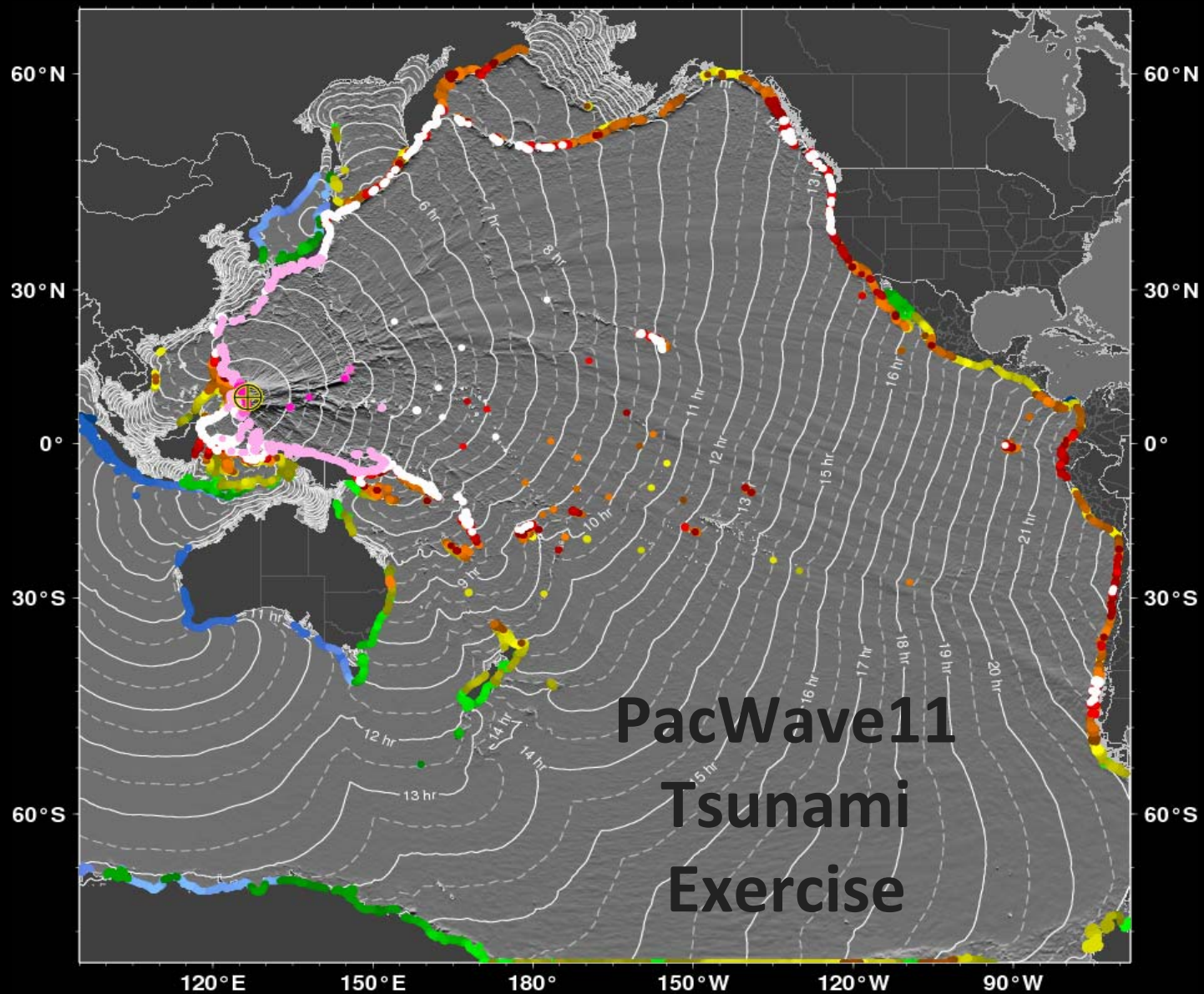
PRODUCT #03
would be issued at 0145 UTC,
105 minutes after the earthquake,
and includes the following 3 maps as
part of the 3rd product suite.

Updated Mw=9.0

The maps do not change further for
this scenario.

PTWC Deep-Ocean Tsunami Forecast Number 03 – Issued 11/10/2011 0145 UTC



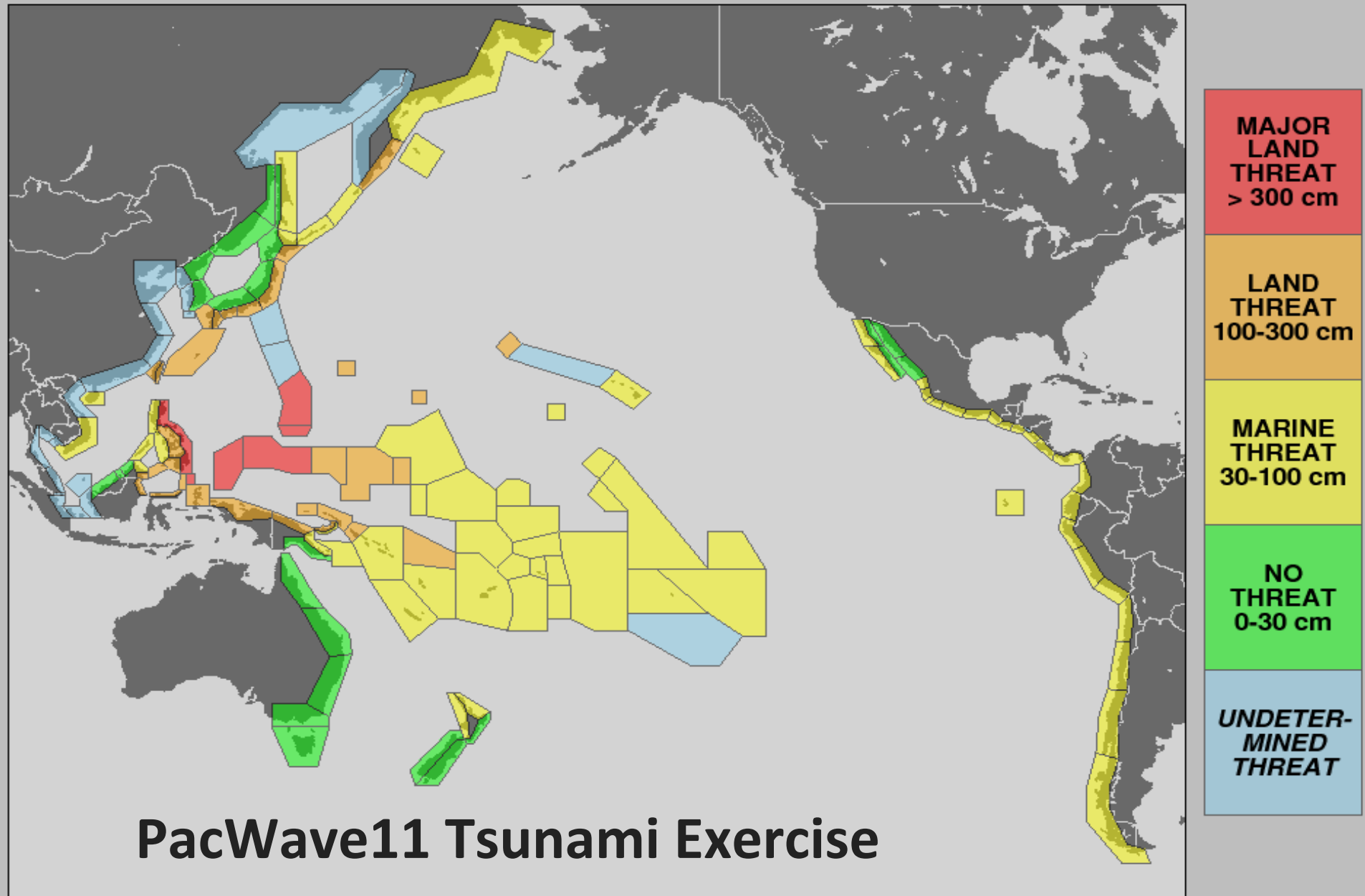


PREDICTED TSUNAMI WAVE AMPLITUDE (meters)



EQ : [9.5, 126.6, 20], Mag=9.0

PTWC Tsunami Threat Level Forecast Number 03 - Issued 11/10/2011 at 0145 UTC



Earthquake: 11/10/2011 0000 UTC 9.5°N 126.6°E h=20km Mw=9.0