

PacWave11 Tsunami Exercise

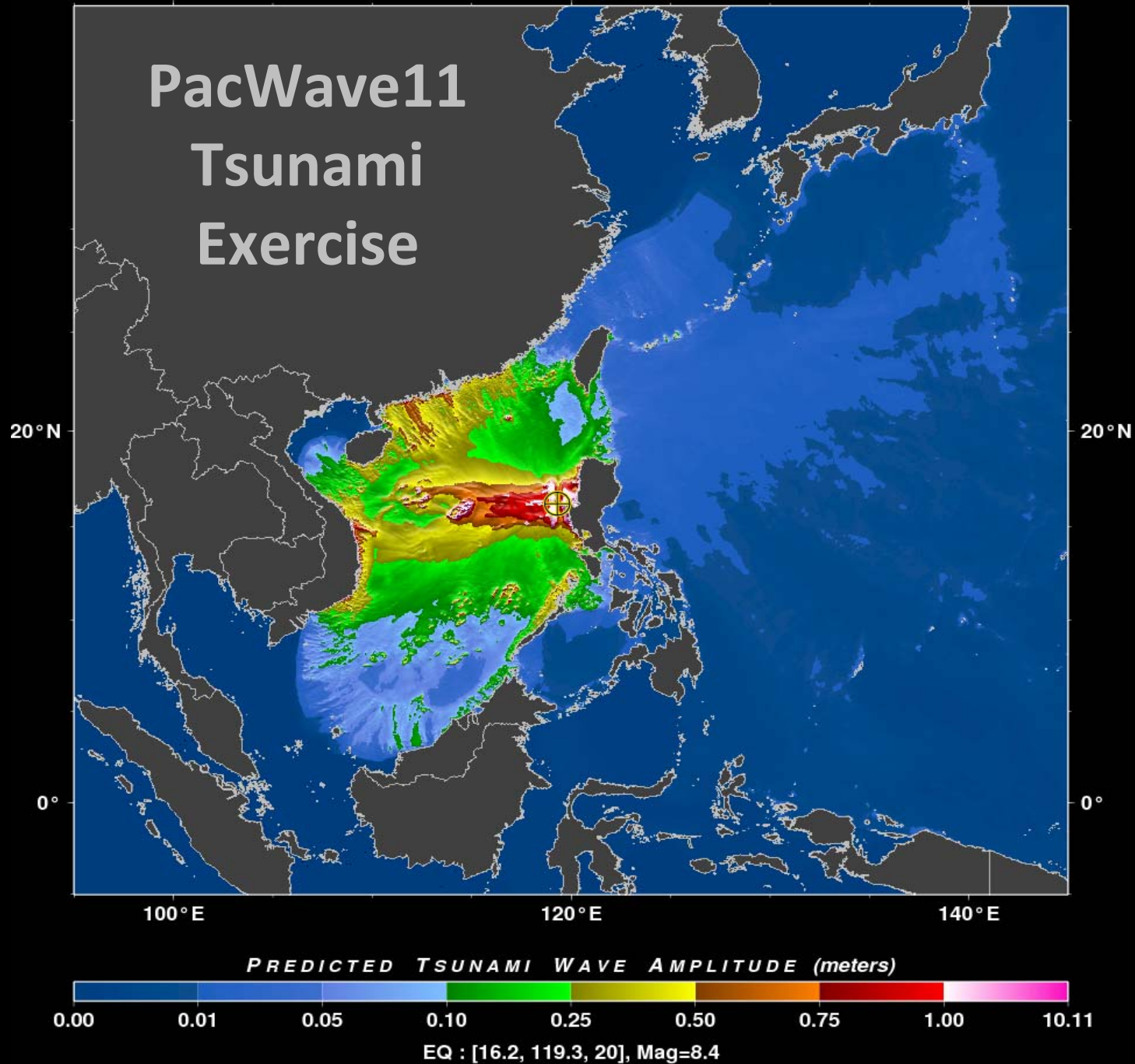
**Manila Trench Mw=9 Earthquake and
Tsunami Scenario**

Draft Experimental Maps

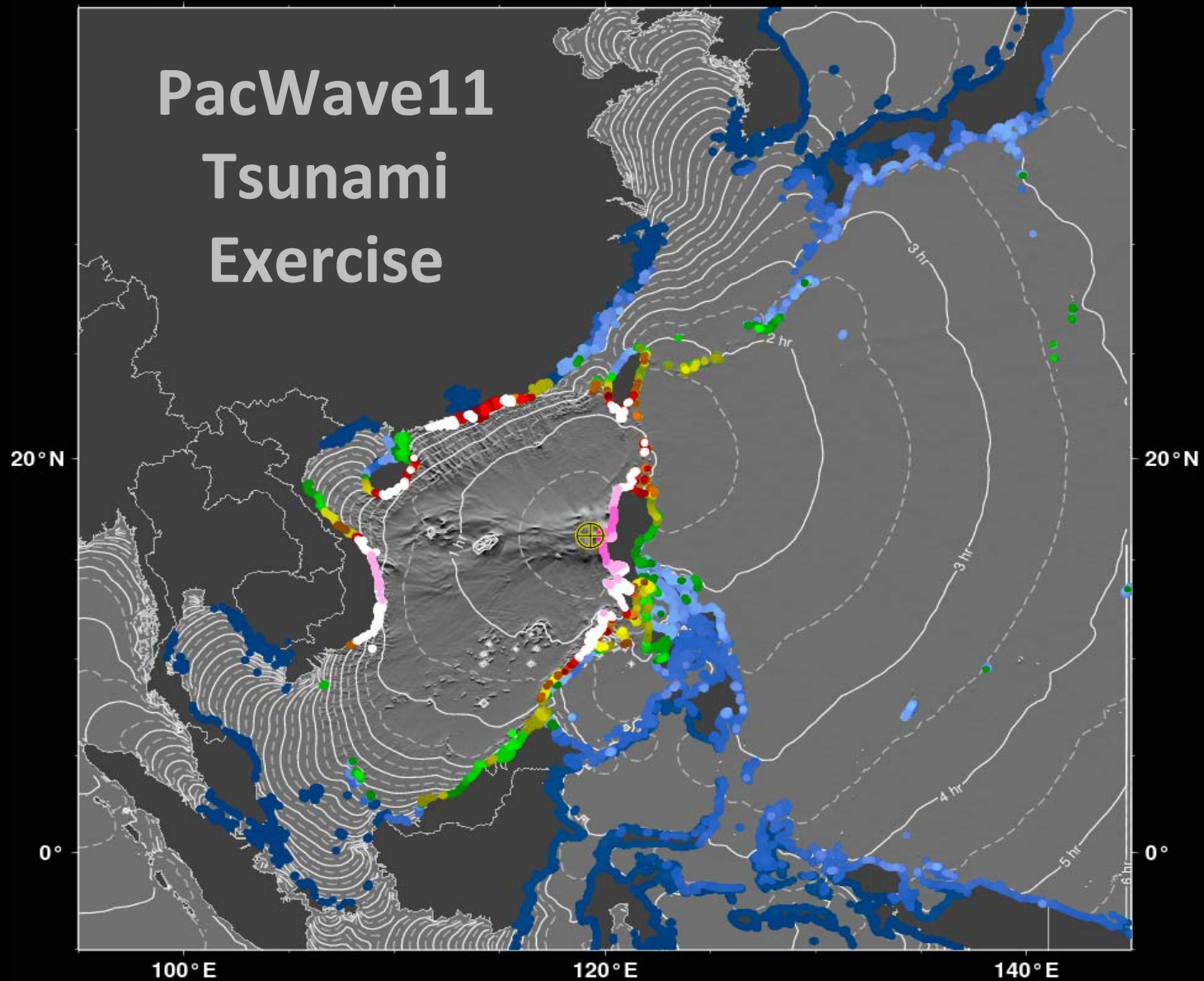
PRODUCT #01
would be issued at 0208 UTC,
8 minutes after the earthquake, and
includes the following 3 maps as part
of the 1st product suite.

Initial Preliminary Mw=8.4

PacWave11 Tsunami Exercise



PacWave11 Tsunami Exercise

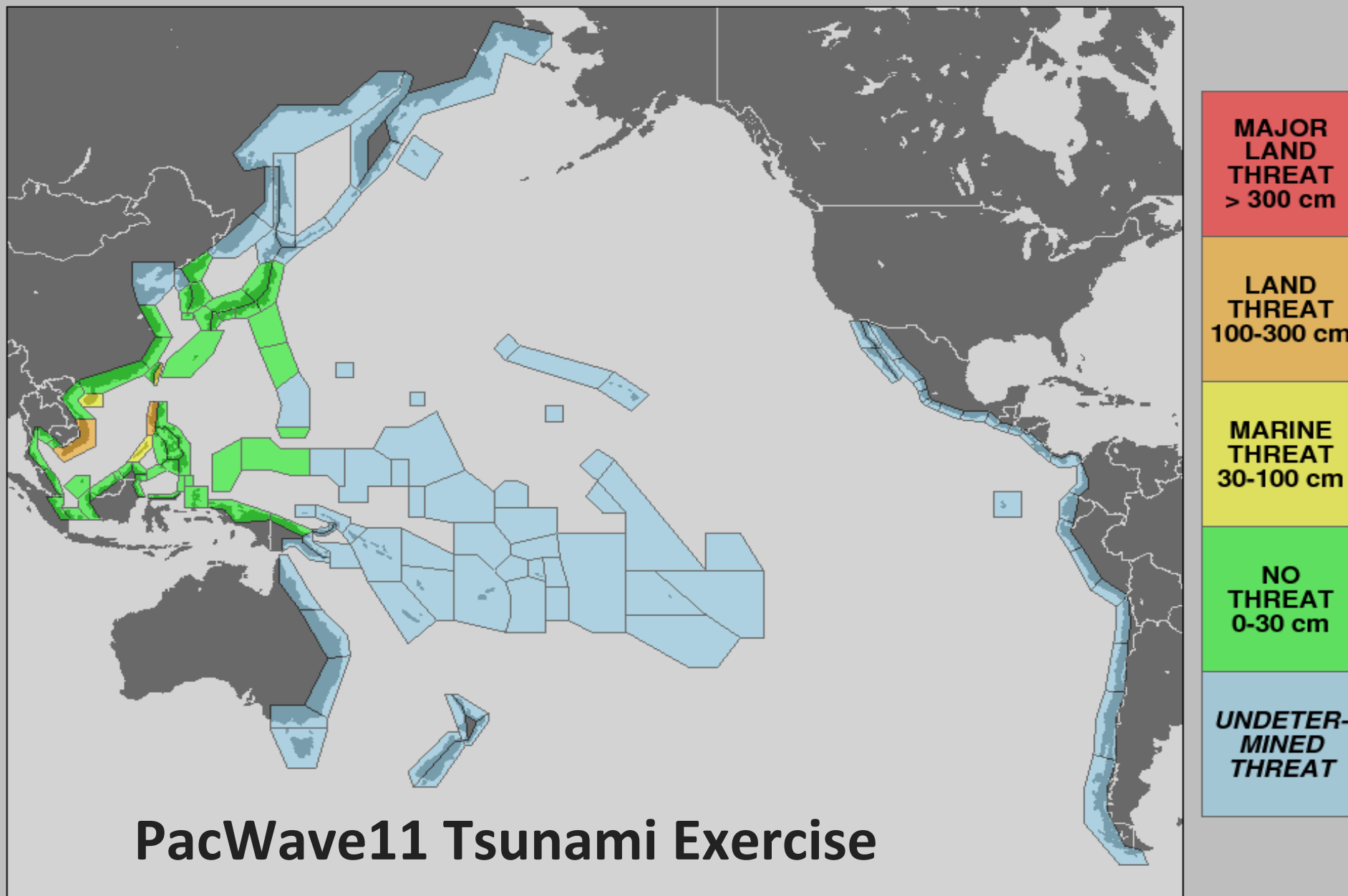


PREDICTED TSUNAMI WAVE AMPLITUDE (meters)



EQ : [16.2, 119.3, 20], Mag=8.4

PTWC Tsunami Threat Level Forecast Number 01 - Issued 11/10/2011 at 0208UTC



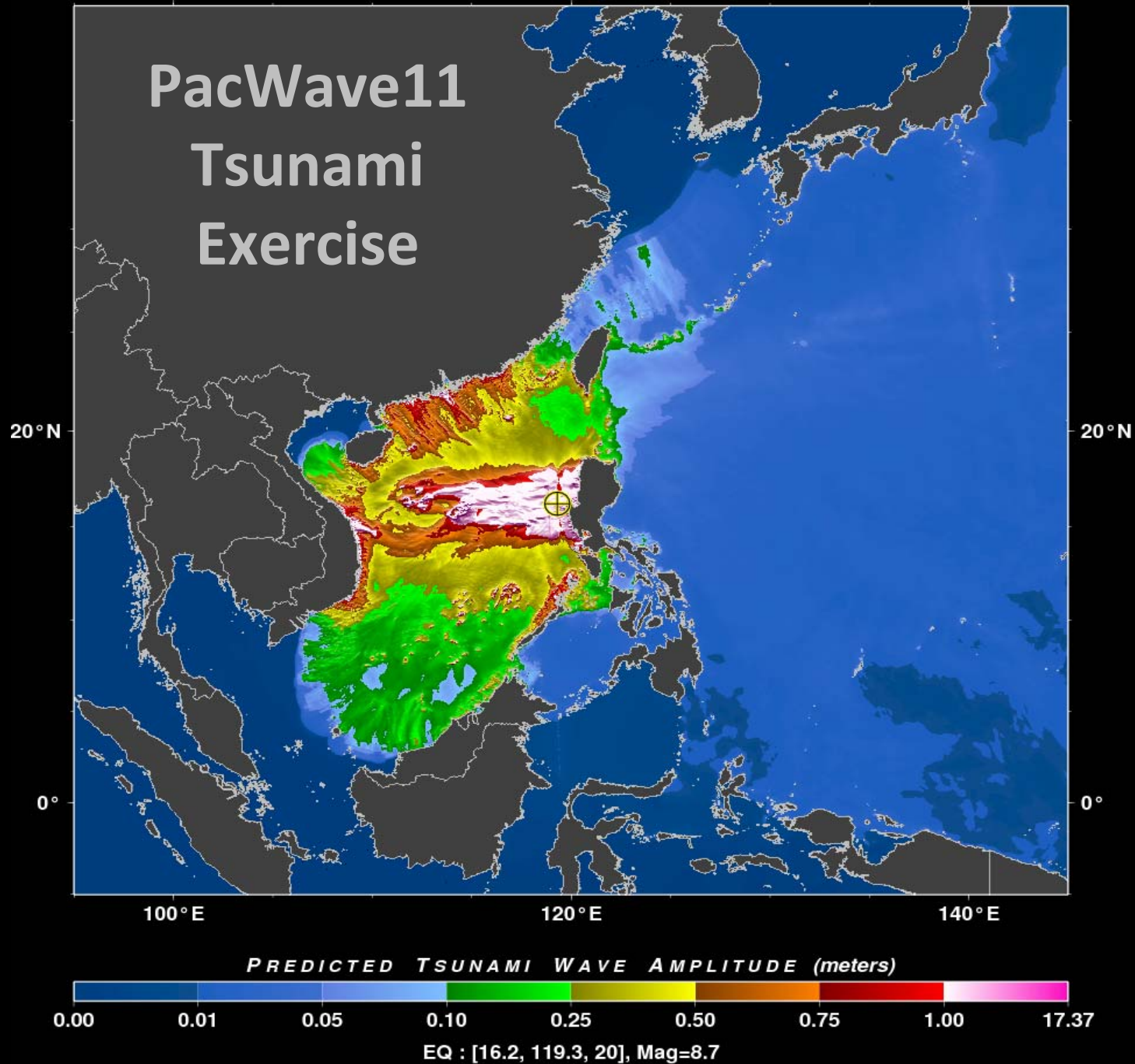
Earthquake: 11/10/2011 0200 UTC 16.2°N 119.3°E h=20km Mw=8.4

PRODUCT #02

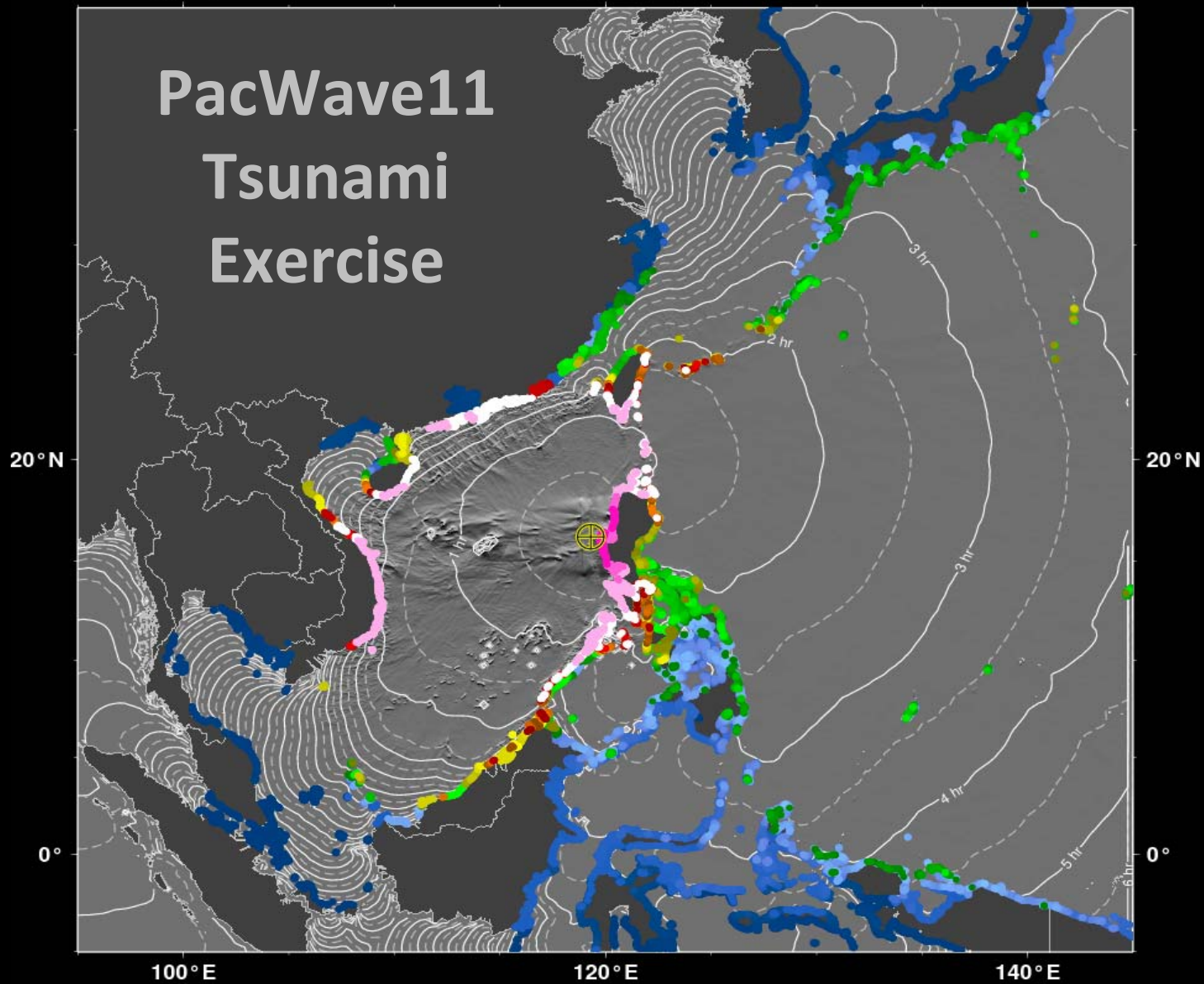
**would be issued at 0245 UTC,
45 minutes after the earthquake, and
includes the following 3 maps as part
of the 2nd product suite.**

Updated Mw=8.7

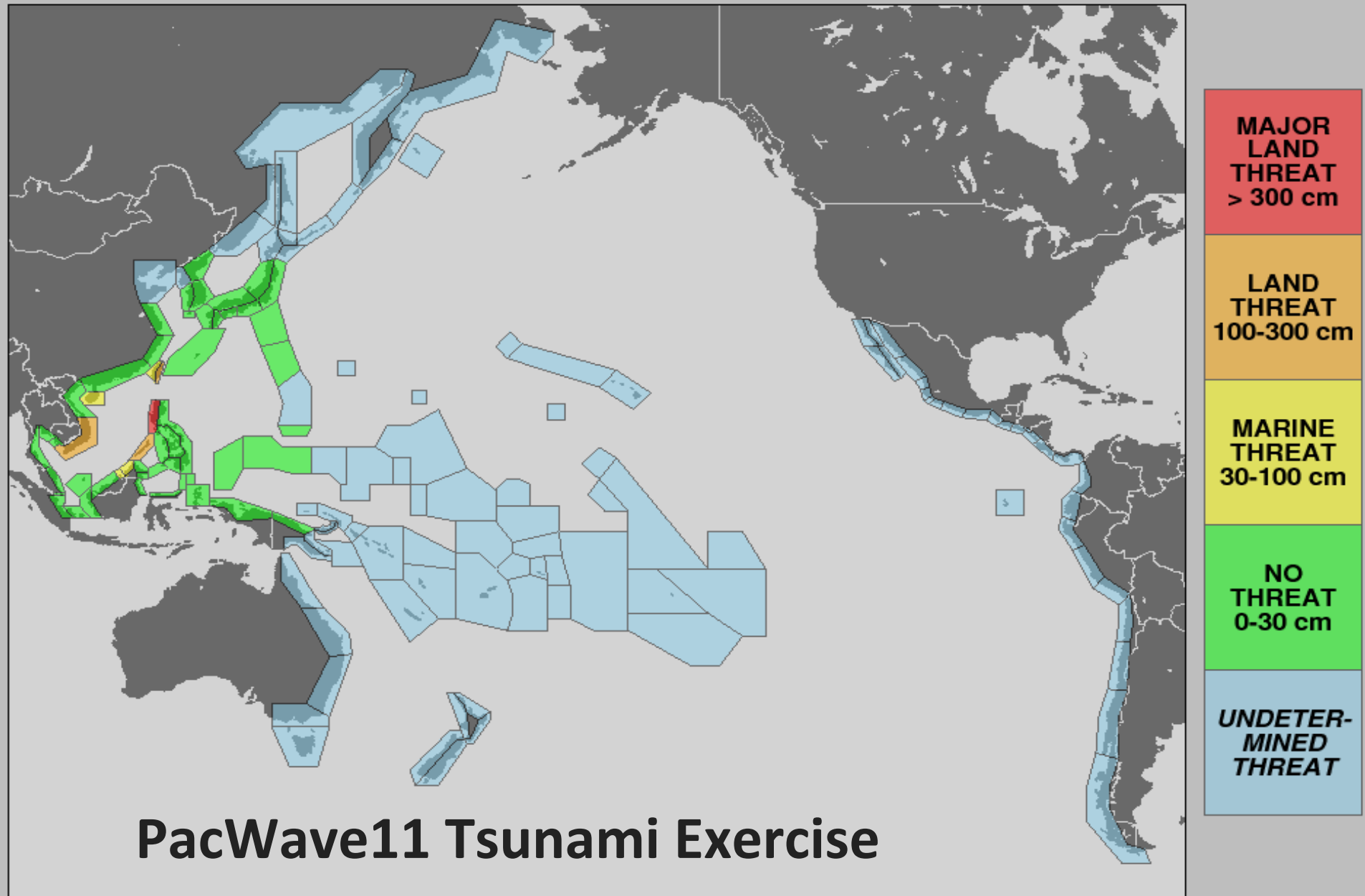
PacWave11 Tsunami Exercise



PacWave11 Tsunami Exercise



PTWC Tsunami Threat Level Forecast Number 02 - Issued 11/10/2011 at 0245 UTC



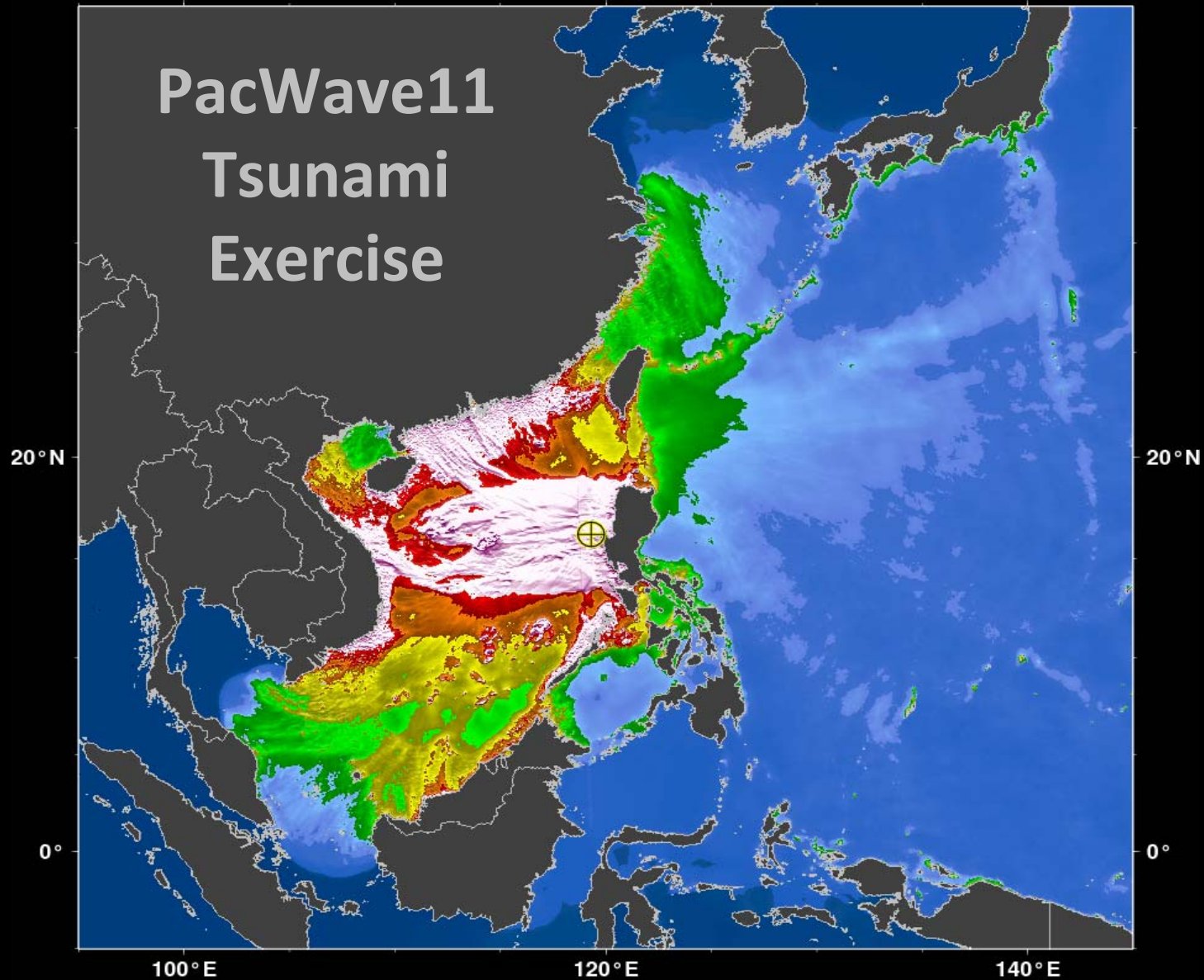
Earthquake: 11/10/2011 0200 UTC 16.2°N 119.3°E h=20km Mw=8.7

PRODUCT #03
would be issued at 0345 UTC,
105 minutes after the earthquake,
and includes the following 3 maps as
part of the 3rd product suite.

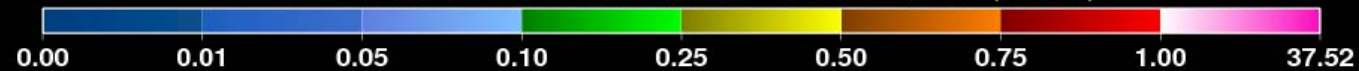
Updated Mw=9.0

The maps do not change further for
this scenario.

PacWave11 Tsunami Exercise

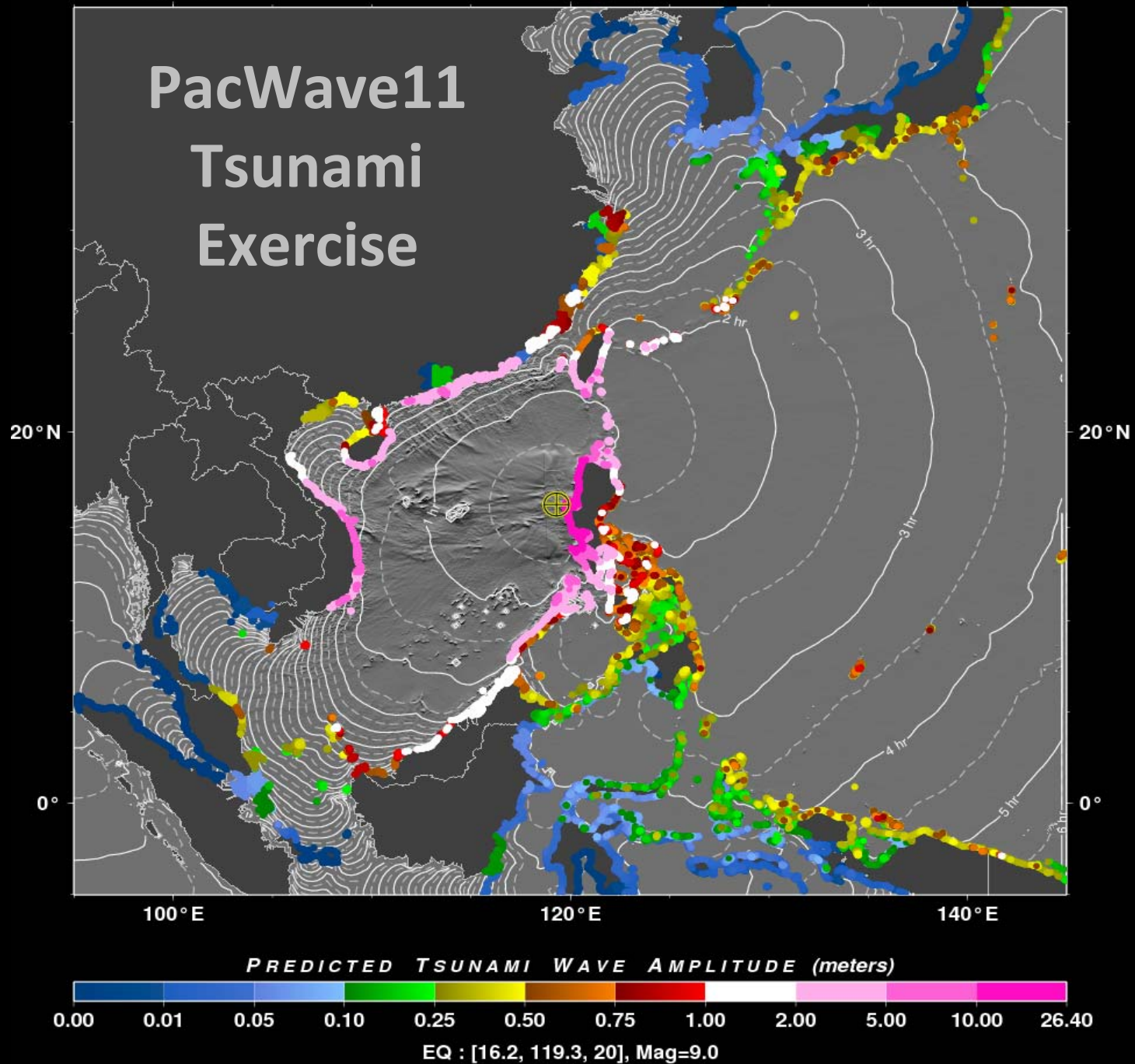


PREDICTED TSUNAMI WAVE AMPLITUDE (meters)

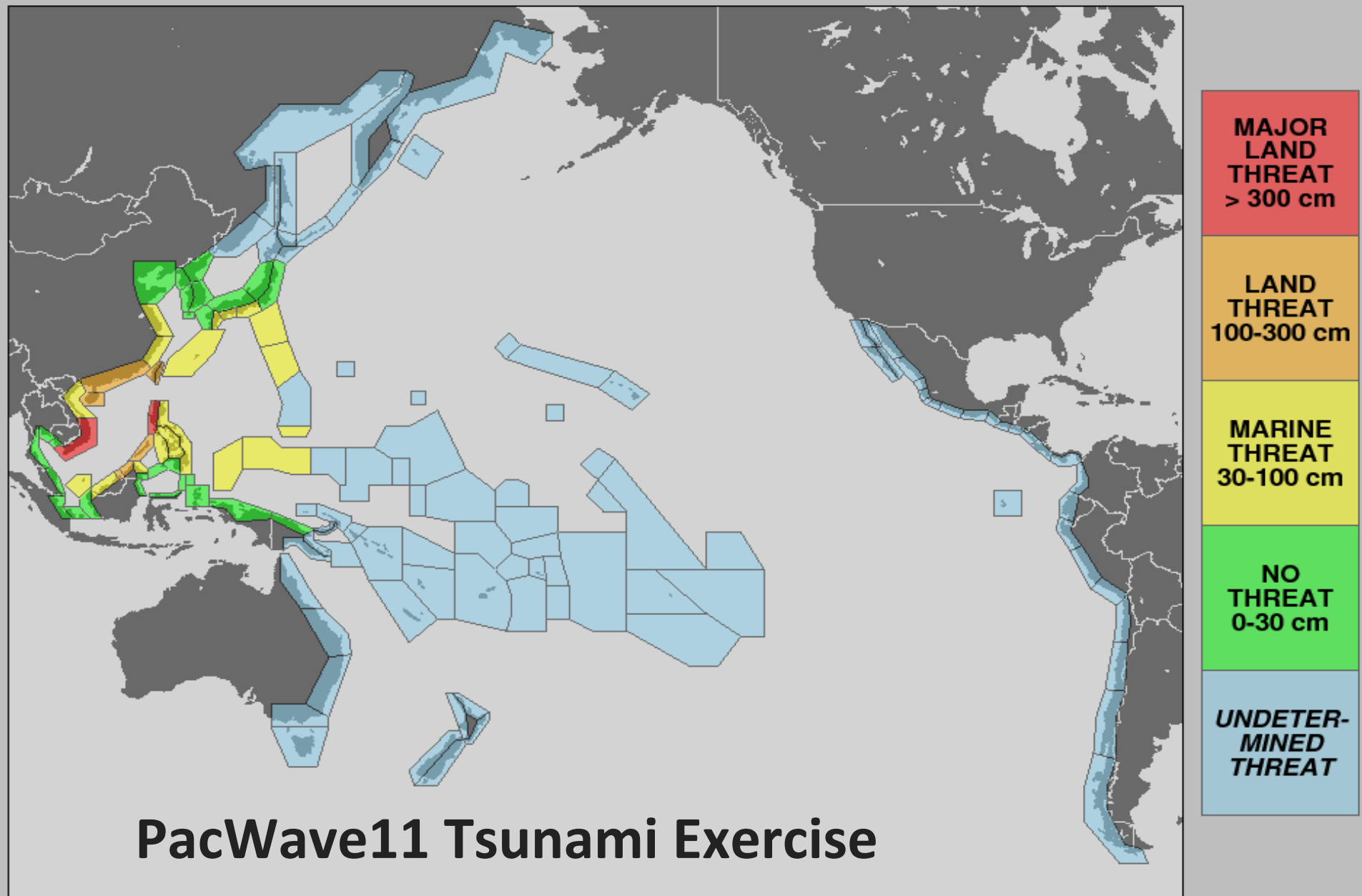


EQ : [16.2, 119.3, 20], Mag=9.0

PacWave11 Tsunami Exercise



PTWC Tsunami Threat Level Forecast Number 03 - Issued 11/10/2011 at 0345 UTC



Earthquake: 11/10/2011 0200 UTC 16.2°N 119.3°E h=20km Mw=9.0