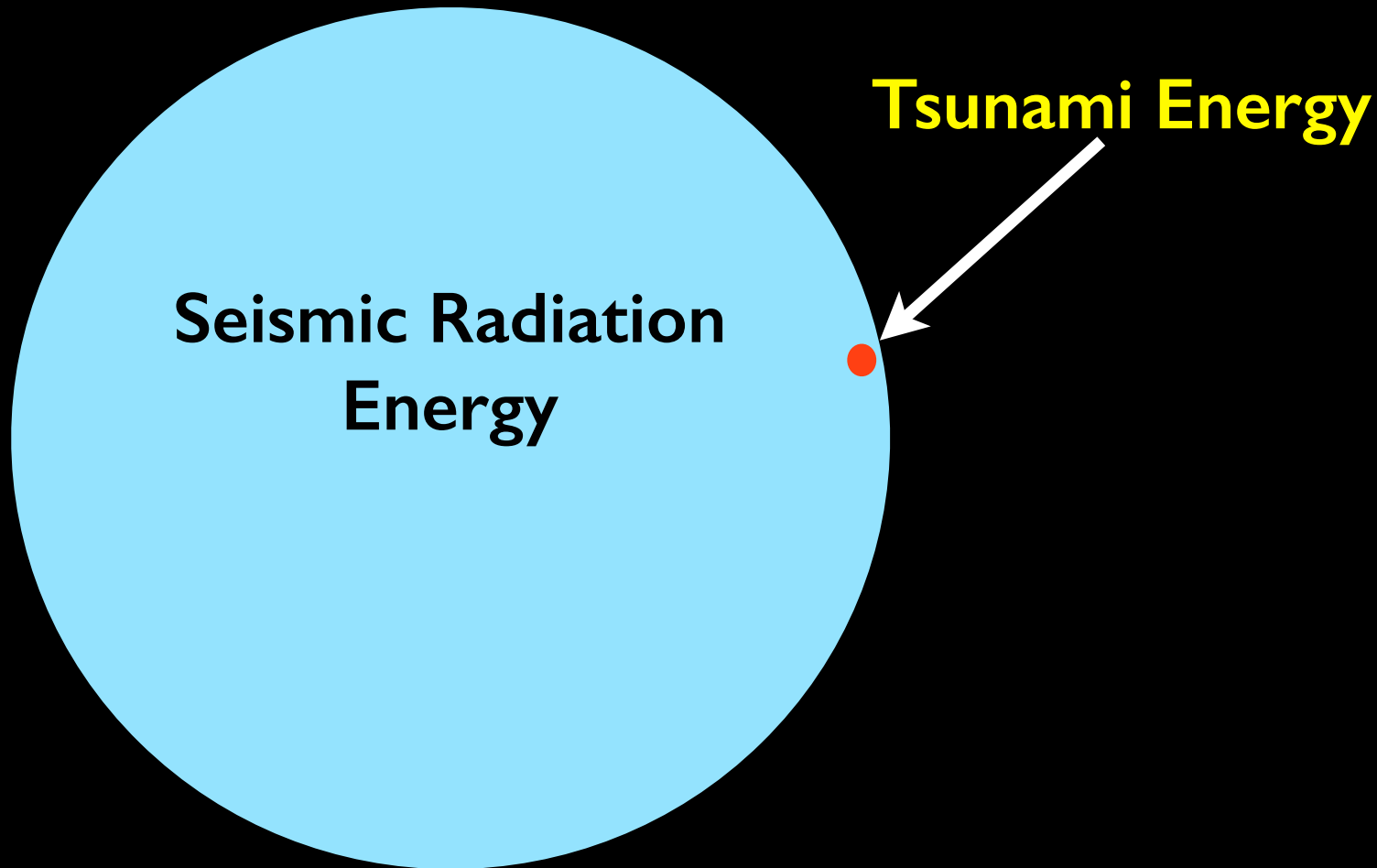


Theme 1:

Hazard & Risk

Identification and Risk Reduction

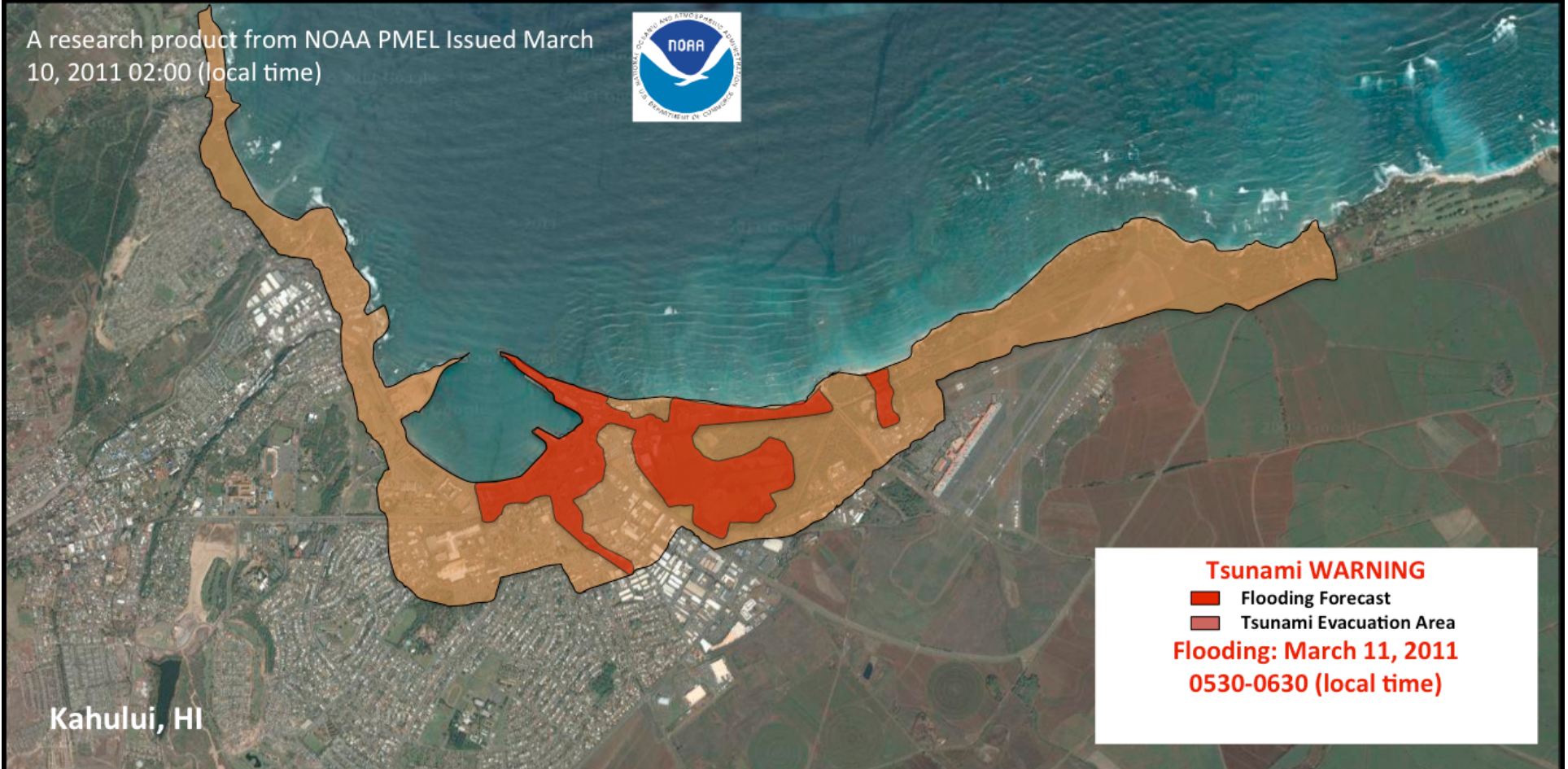
Earthquake Energy vs Tsunami Energy





Tsunami is a flooding hazard

Tsunami Flooding Forecast Product

A research product from NOAA PMEL Issued March
10, 2011 02:00 (local time)



Tsunami WARNING

-  Flooding Forecast
-  Tsunami Evacuation Area

**Flooding: March 11, 2011
0530-0630 (local time)**

Theme 1: Hazard & Risk

Recommendation #1

Establish **standards** for flooding products such as evacuation maps, building codes, preparedness programs, etc.
to serve as international guidelines.

These standards require technical expertise that could be drawn from IUGG Tsunami Commission.

Theme 1: Hazard & Risk

Recommendation #2

Build capacity to apply these standards in tsunami threatened countries to ensure public safety and global consistency.

Capacity could be built using the UNESCO/IOC procedures and educational partners throughout the world