

NEMO

Hunga-Tonga-Hunga-Ha'apai Volcanic Eruption & Tsunami Disaster



*National Emergency Management Office
Ministry of MEIDECC*



Tonga Geological Services commenced reporting
on the Hunga Tonga Hunga Ha'apai (HTHH) volcanic
activity on 20th December 2021.

Table of Contents

1. Background of the Humanitarian Relief Response to Hunga-Tonga-Hunga-Ha'apai Volcanic Eruption & Tsunami Disaster
2. Structure of the Hunga Tonga Hunga Ha'apai Operation
3. Initial Damage Assessment (IDA)
4. Immediate Response
 - Summary of Humanitarian Support*
 - Total Number of Vessels & Flights with Humanitarian Support*
5. Covid-19 Home Isolation Food & Non-Food Items Distribution
6. Recovery & Reconstruction

1. Background

Humanitarian Relief Response to Hunga-Tonga-Hunga-Ha'apai Volcanic Eruption & Tsunami Disaster

14th January, 2022

- Activation of the National Emergency Operations Centre (NEOC) due to a tsunami marine warning issued by Tonga Met.

15th Saturday, 2022

- NEMO and HMAF officers departed on the Ngahau Siliva with 3450ltrs of drinking water for Mango & Fonoi

5:15pm (approximately) - NEMO Staff evacuate MEIDECC building due to strong earthquake

5:20pm (approximately) – Director instructed NEMO staff to call Police and advise to evacuate people immediately from the streets

- Other NEMO staff used NEMO vehicle with siren travelled to Popua area to alert communities to move further inland

- Two other NEMO staff encouraged people in town to move inland or higher ground immediately

- NEMO staff managed to contact Principal of GPS Pangai to evacuate to high ground before the network communication went down.

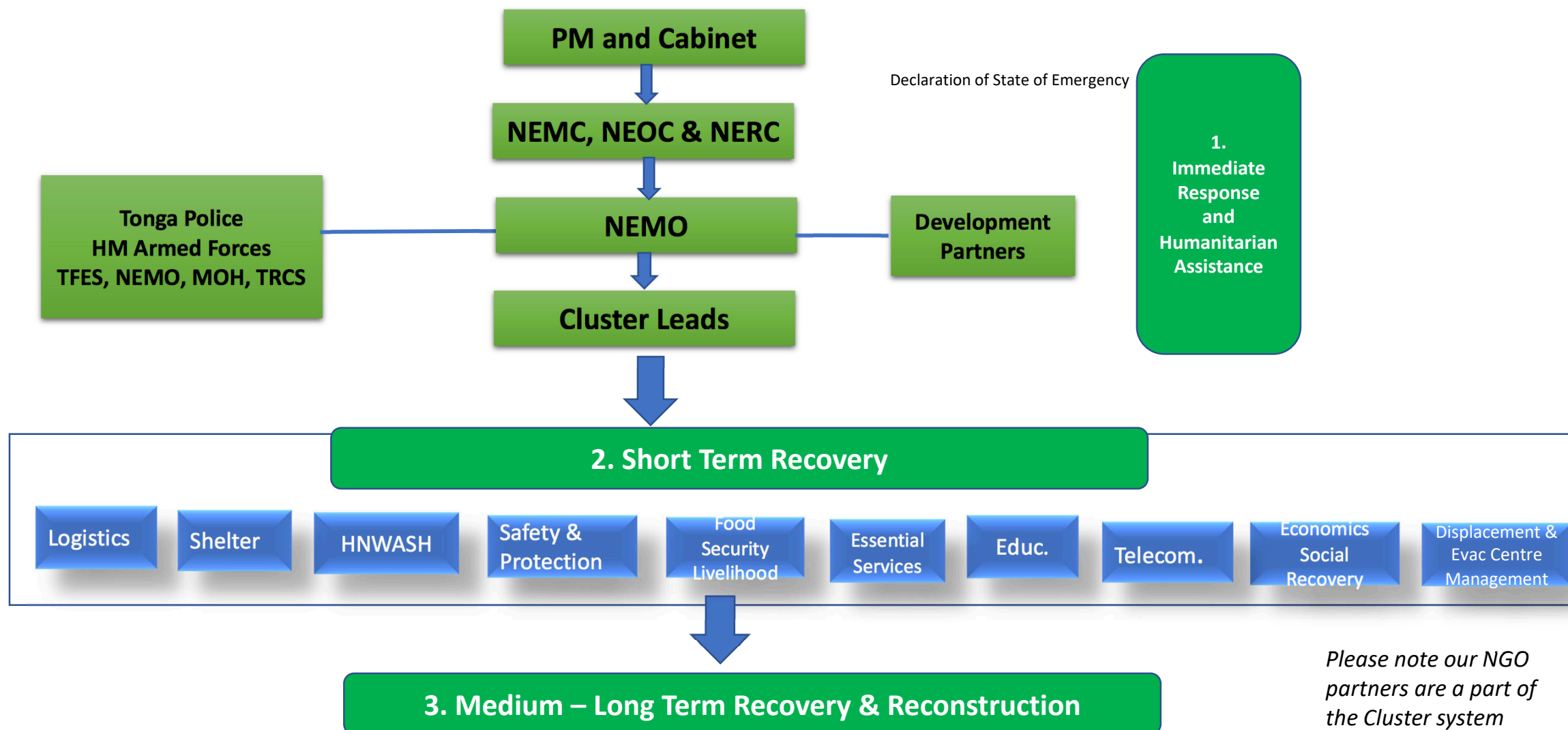
7:30 (approximately) – Hon. Prime Minister addressed the nation on radio, advising people to contact NEMO if they need water and for evacuation procedures

9:00pm (approximately) – NEMO Director collected NEMO staff and began operation from the Operation Emergency Centre and NEMO Office with a skeletal staff of 4, 3 Information Department officers and 6 Geology staff (they had sought shelter at the NEMO office when power went out)

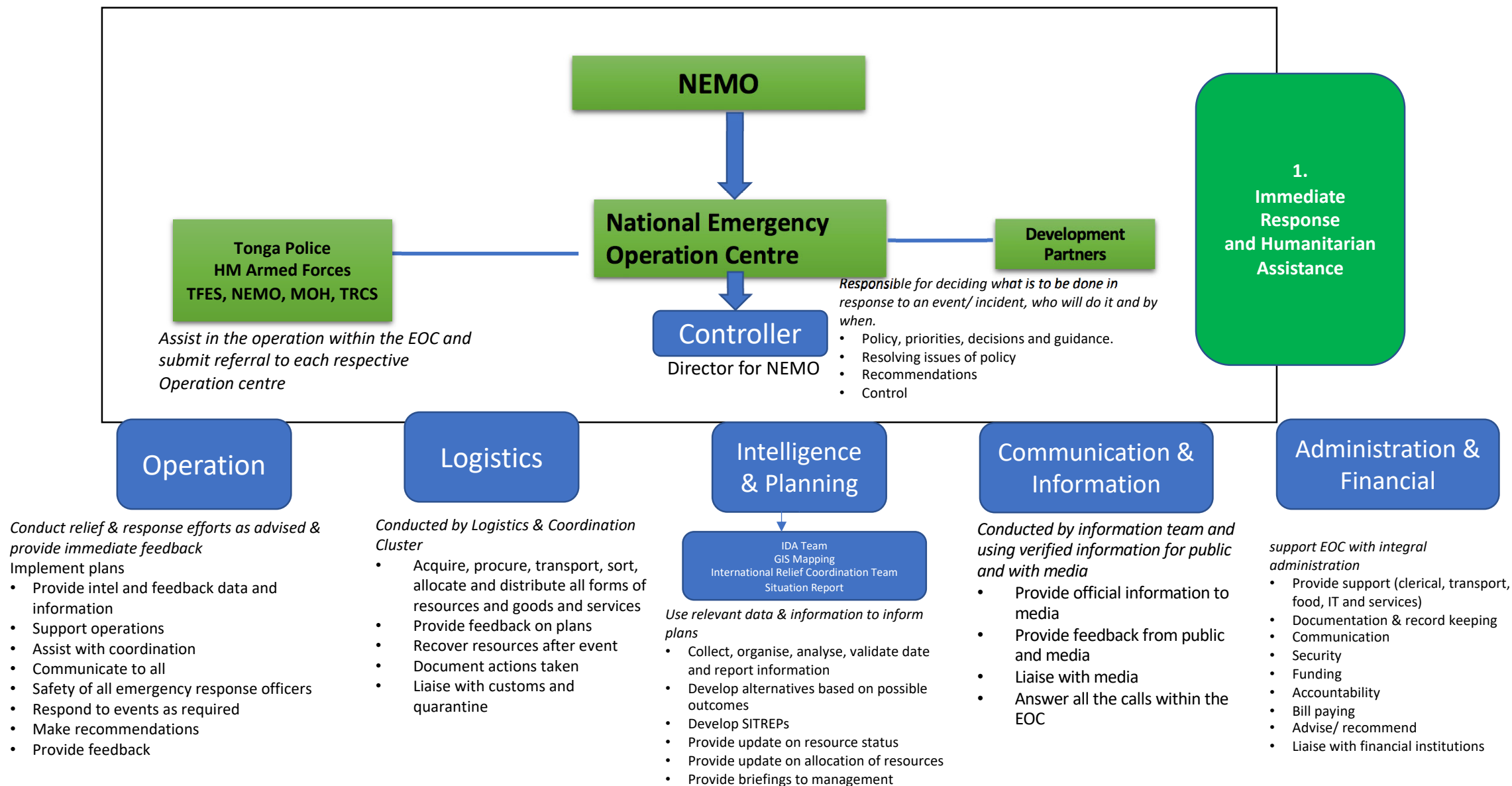
- **Prime Minister, Deputy Prime Minister(DPM), CEO for MEIDECC, Director for NEMO and the Director for Geo-Hazard Unit commenced strategic operation from the DPM office as part of NEMC emergency operation**

- EOC received approximately 200 calls and NEMO responded to 157 calls and provided drinking water for approximately 4598 people until daylight the following day (NEMO/ MEIDECC staff)

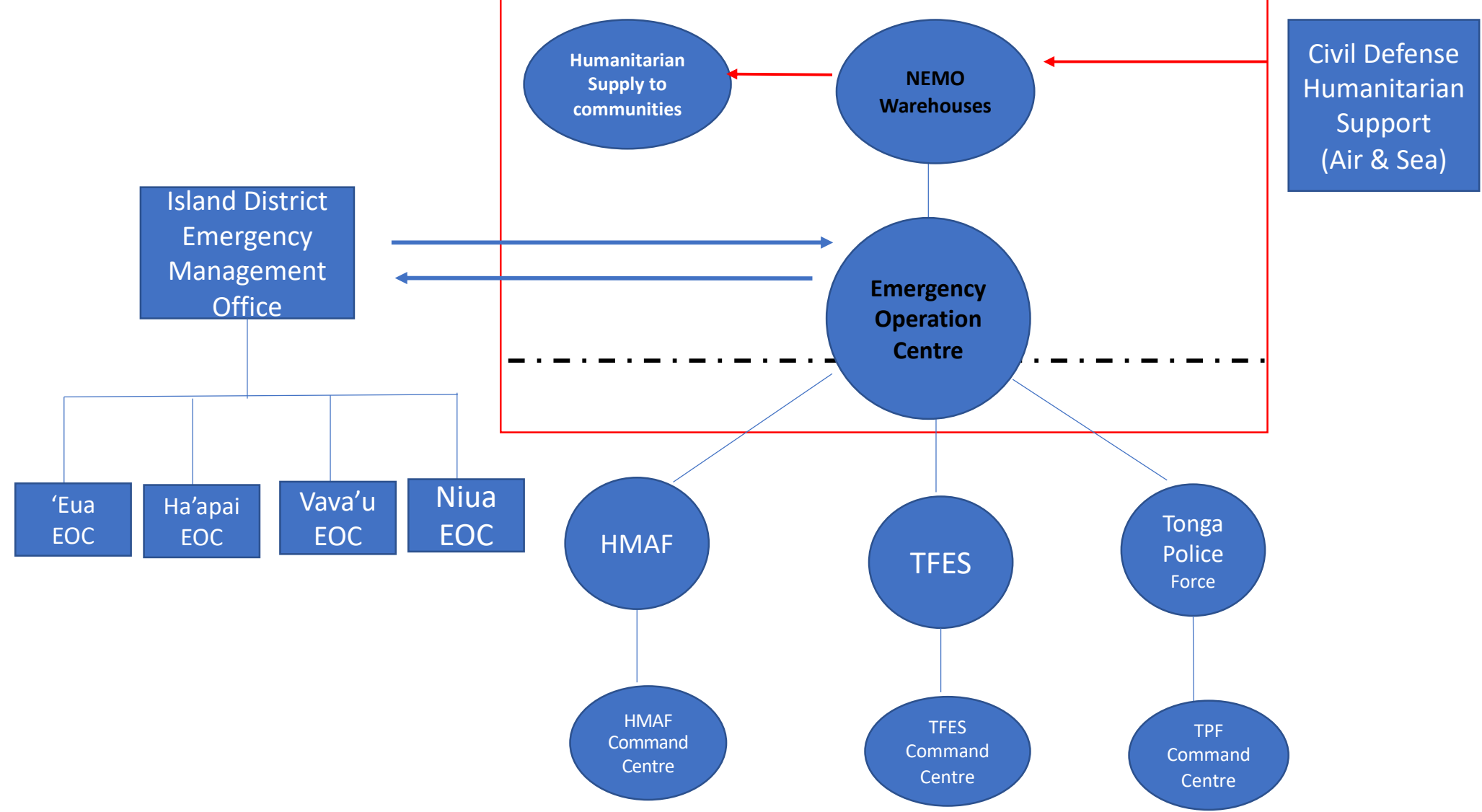
2. Structure of the Hunga Tonga Hunga Ha'apai Operation



2.1 Structure of the Emergency Operation Centre



2.2 EOC Links to District Emergency Operation Centres and First Responders Command Centres



NEOC Activated on the 14th January, 2022 – Stand down of Operation the 14th April, 2022

Initial Damage Assessment

Table 1: Numbers of households and level of damages in each district across the affected Islands

Island	District	Village	1 minor damage	2 moderate damage	3 severely damage	4 completely destroyed	Grand Total
'EUA	'Eua	'Ohonua	5	6	6	30	47
'EUA Total			5	6	6	30	47
Ha'apai	Lifuka	Hihifo	7	3	2	5	17
		Lifuka Total	7	3	2	5	17
	Lulunga	Ha'afeva	1	2	1	3	7
		Kotu	1	0	1	4	6
		Matuku	0	1	0	0	1
		Tungua	4	10	6	11	31
	Lulunga Total		6	13	8	18	45
	Otumu'omu'a	Fonoifua	0	0	1	17	18
		Mango	0	0	0	14	14
		Nomuka	11	6	4	24	45
	Otumu'omu'a Total		11	6	5	55	77
	Uiha	Uiha	4	0	0	0	4
Uiha Total			4	0	0	0	4
HA'APAI Total			28	22	15	78	143
TBU	Kolofo'ou	Fasi	0	1	1	2	4
		Nukunukumotu	2	1	10	1	14
		Pangaimotu	0	0	1	0	1
		Fafa	0	0	0	1	1
		Popua	0	6	0	0	6
		Tukutonga	1	17	14	2	34
	Kolofo'ou Total		3	25	26	6	60
	Kolomotu'a	Kolomotu'a	14	6	13	5	38
		Sopu	7	18	11	6	42
	Kolomotu'a Total		21	24	24	11	80
	Kolovai	'Ahau	4	6	4	0	14
		'Atata	2	0	3	20	25
		Fo'ui	0	0	0	1	1
		Kanokupolu	1	9	34	20	64
	Kolovai Total		7	15	41	41	104
	Lapaha	'Eueiki	0	0	3	3	6
		Manuka	8	7	1	0	16
		Navutoka	8	1	0	0	9
		Talafo'ou	1	1	1	0	3
	Lapaha		17	9	5	3	34
TONGATAPU TOTAL			48	73	96	61	278
Grand Total			81	101	117	169	468

- The Initial Damagement Assessment was conducted on 16th – 20th January, 2022.
- The purpose of the IDA is to identify the damage caused by the HTHH disaster and identify the needs of the affected population.
- The IDA form was initially developed by NEMO, in close consultation with Cluster Leads, following Tropical Cyclone Gita and has gradually been adapted so it is fit for purpose in collecting required data on damage and loss, as a result of a disaster.
- Initial Damage assessment results has also been provided from other Clusters on the HTHH impact across the Kingdom of Tonga.
- This IDA report and analysis provides a snapshot based on the feedback from the affected persons and seeks to provide further advice on next steps to assist with early recovery efforts.
- A total of 286 homes will be reconstructed (117 Severely damage and 169 completely destroyed)

[illegible]

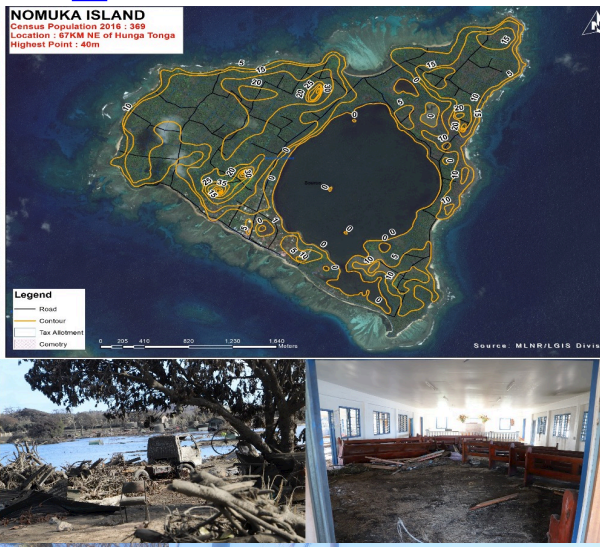
 Road
 Series of Tidal Waves
 Lake
 Island

Date: 14/02/2022

Tongatapu



NEMO



FONOIFUA ISLAND



HA'AFEVA



TUNGUA

NEMO

'Eua



4. IMMEDIATE RESPONSE

First Responders/ Humanitarian Actors

- National Emergency Management Office (NEMO)
- His Majesty's Armed Force (HMAF)
- Tonga Police Force
- Tonga Fire & Emergency Services (TFES)
- Mainstreaming of Rural Development Innovation (MORDI Tonga Trust)
- Caritas Tonga
- Tonga Red Cross Society (TRCS)
- Ministry of Internal Affairs (MIA)
- Ministry of Infrastructure (MOI)
- Ministry of Health (MOH)
- Tonga National Youth Congress (TNYC)
- Tonga Family Health Association (TFHA)

Immediate Response include:-

- Evacuation of affected population
- Conduct Initial Damage Assessment (IDA)
- Clearing of debris
- Civil- military humanitarian Assistance (Air & Sea)
- Distribution of Food Items and Non-Food Items across Tongatapu, Ha'apai, 'Eua and Displaced communities
- Distribution of food items to Home Isolations on covid-19 community transmission

NEMO

4.1 CIVIL MILITARY HUMANITARIAN ASSISTANCE



4.2 Summary of Flights & Vessels with Humanitarian Relief

Number of Flights	Number of Vessels
42	24



4.3 Humanitarian relief from Tongan diaspora around the world Humanitarian Relief Supplies Donated from the Tongan Diaspora in New Zealand, Australia and the United States and Japan



- We have received more than 400 containers of relief items from the Tongan diaspora from all over the world
- Consigned to NEMO to distribute while others where care off to NGO's, religious groups and communities to distribution



4.4 Humanitarian Relief Distribution of Food Items & Non Food Items

16th – 18th Sunday 2022

- 220 Litres, 150 kitchen kits, 150 hygiene kits and 222 tarpaulins for Nomuka, Fonoi and Mango was transported via HMAF Late
- Initial Damage Assessment began on the 16th January for Tongatapu and the 17th at 'Otu Mu'omu'a and Lulunga
- Distribution began as soon as boat arrived in the islands



NEMO & HMAF Officers offloading humanitarian relief supply for Nomuka



Offloading from the Late humanitarian relief supply and food items for **Tungua** by NEMO and HMAF



Matuku



'O'ua



Kotu

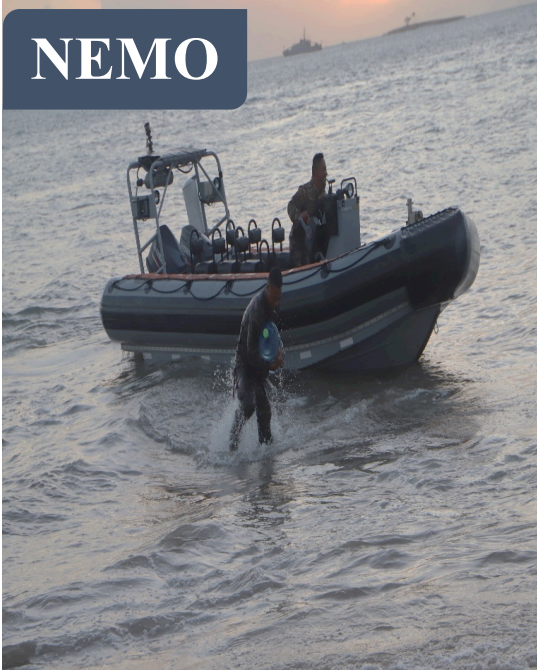


Offloading humanitarian relief supply to a Fonoi fishing boat



Ha'afeva

NEMO



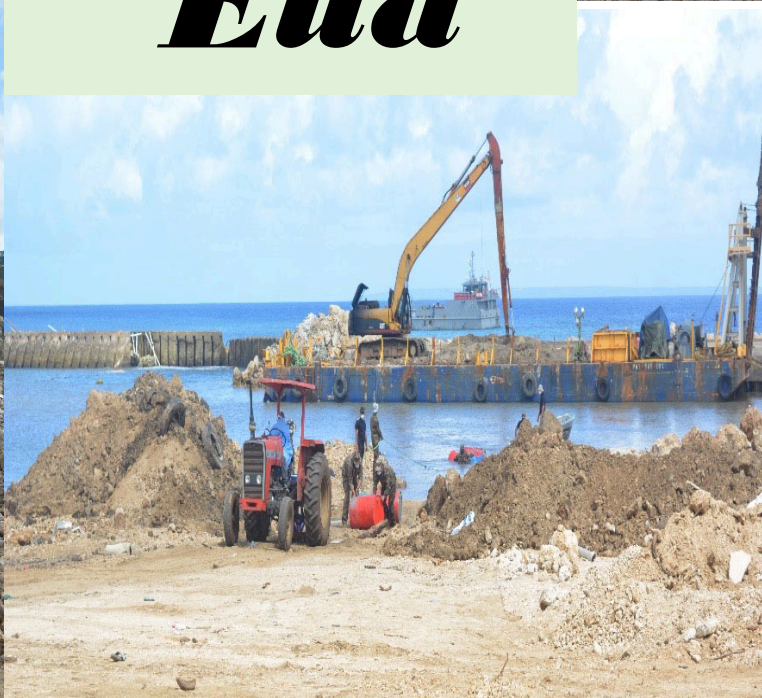
Ha'apai



NEMO



Eua



**NEMO & HMAF @
Nukunukumotu**



Kolonga



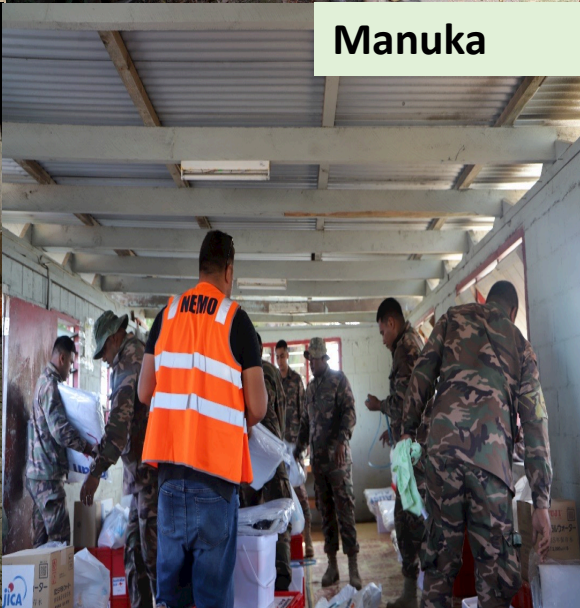
Navutoka



'Atata



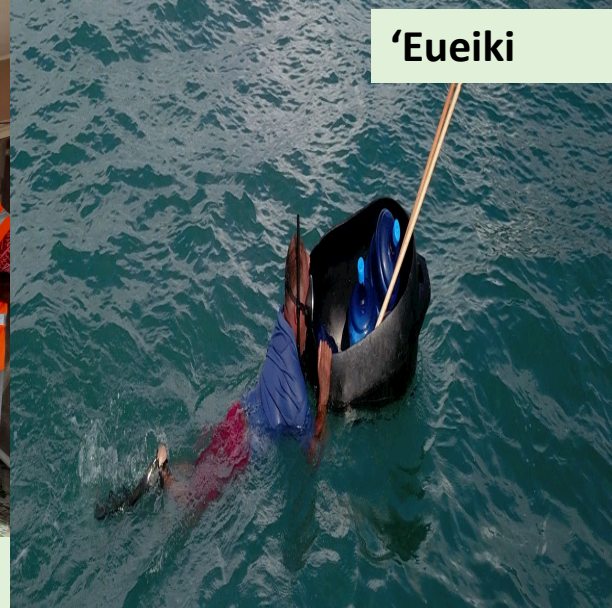
Manuka



**NEMO & HMAF
@ Patangata**



'Eueiki



Fijian Community



Tongatapu



'Ahau, Kanaokupolu & Ha'atafu



5. Covid-19 Home Isolation Food & Non-Food Items Distribution

- ❖ EOC received **1338** from households in home quarantine (5/02 – 14/04/2022) requesting assistance
- ❖ NEMO & TFES distributed **3530** food ration/ packages from donated food items that were donated by donors for the HTHH impacted communities (Tongatapu only)
- ❖ **10,590 water packs** were distributed to households in home quarantine together with food rations.
- ❖ 200 COVID-19 hygiene kits donated by Caritas Tonga were also distributed.
- ❖ NEMO also distributed food items and care packages to first responding agencies who worked around the clock during this difficult time (HMAF, TFES, Tonga Police, MOH and NEMO/ MEIDECC)



RECONSTRUCTIONS & RECOVERY

Relocation Area for Displaced Communities

1. Kanokupulu



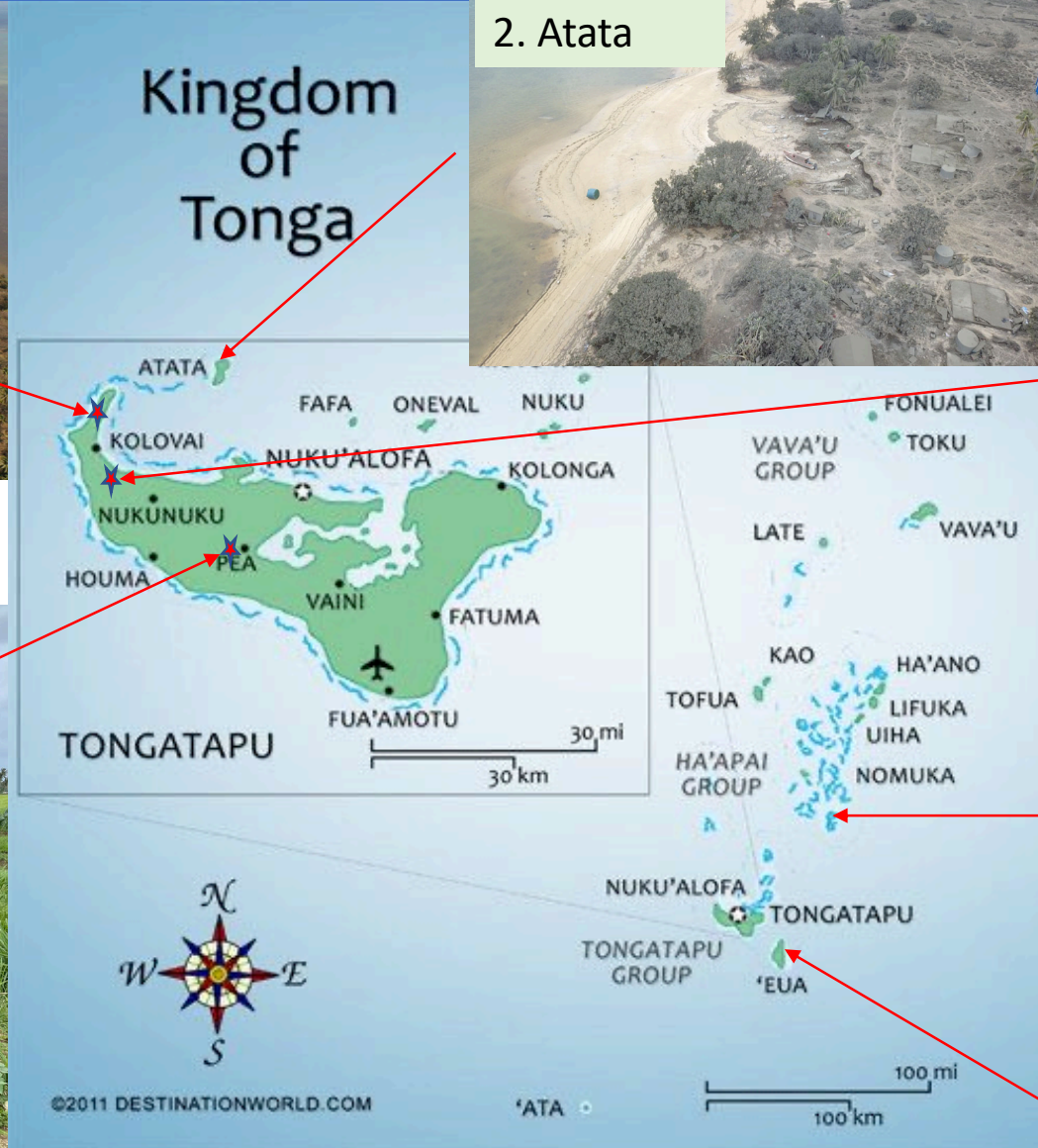
Relocation Site for Kanokupulu- Matatooa



2. Atata



Relocation Site for 'Atata - Masilamea



3. Mango



Relocation Site for Mango – Ta'anga 'Eua

6. Recovery & Reconstruction

Construction of affected homes

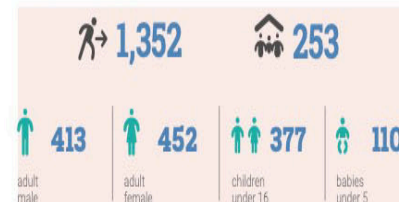
- Reconstruction of affected homes are currently underway at affected areas. Five(5) homes have been reconstructed, two hundred and seven (207) homes' contracts have been signed to be constructed.
- Clearing of area for displaced communities are currently under way in preparation for construction.
- 22 homes is currently under construction at Atata relocation area
- 19 homes under construction; 6 at Patangata and 4 at Kolomotu'a, 4 at 'Eua
- Preparation to start construction at Nomuka, Fonoi and Tungua



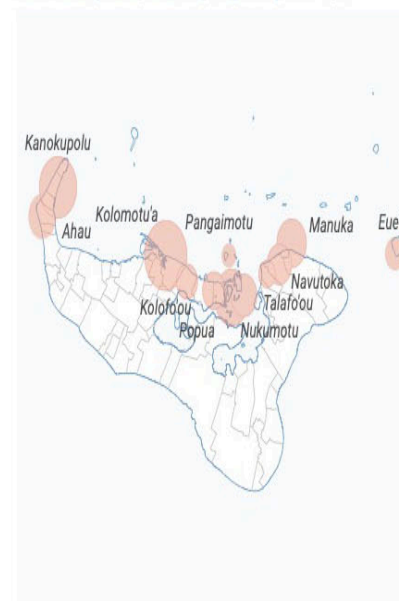
The HHHT Volcanic Eruption and the induced tsunami waves which hit Tonga in the evening of 15 January 2022 resulted in the displacement of about **2,390** people and **465** households based on data collected to date. About **54.41%** of affected households are found in Tongatapu, **30.54%** in Ha'apai Islands, and **15.05%** in 'Eua. Additional data collection on displacement numbers, needs and locations is ongoing by NEMO (with support from IOM). Further details and updates will be published soon.

TONGATAPU

Displaced population breakdown

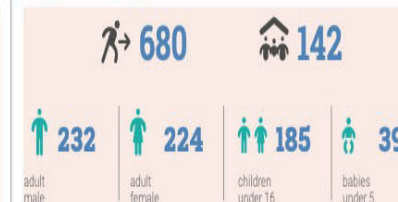


Internally displaced people by village

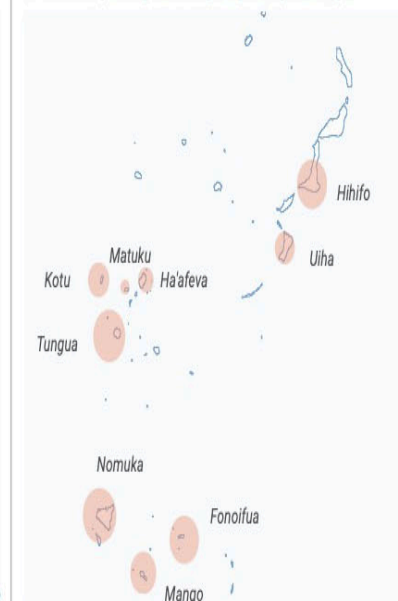


HA'APAI

Displaced population breakdown

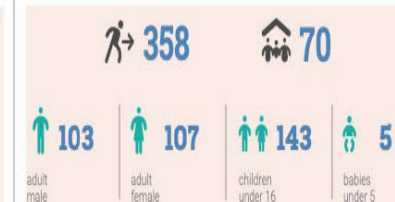


Internally displaced people by village

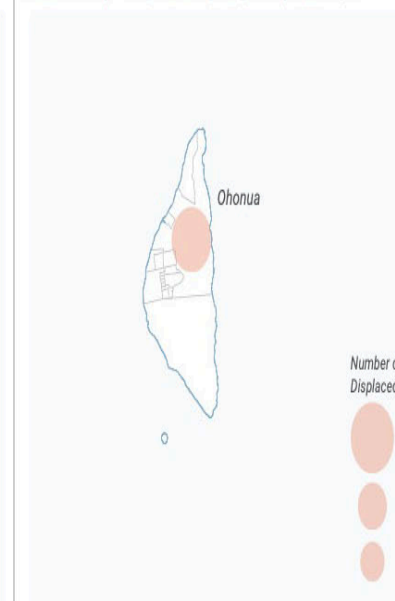


'EUA

Displaced population breakdown



Internally displaced people by village

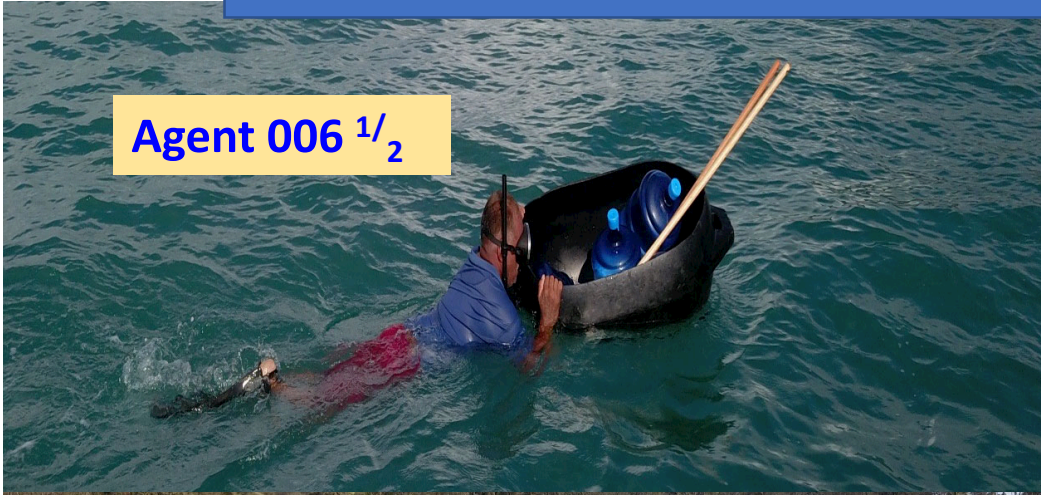


NEMO

Mission Impossible 4!

Agent 006 $\frac{1}{2}$

MORDI & NEMO Humanitarian Assistance for 'Eueiki



Malo 'Aupito

National Emergency Management Office
Ministry of MEIDECC
Otto Sanft Building, Level 3
Taufa'ahau Road,
Nuku'alofa

Ph: 26340