

# Japan Maritime Center



## Japan Maritime Center

### General Affairs Department / Project Support Department / Kaiji Center Building Management Department

Kaiji Center Bldg. 8F, 4-5 Koji-machi, Chiyoda-ku, Tokyo, 102-0083, Japan  
TEL. +81-3(3265)5481 FAX. +81-3(3222)6840

### Planning and Research Department

Kaiji Center Bldg. 4F, 4-5 Koji-machi, Chiyoda-ku, Tokyo, 102-0083, Japan  
TEL. +81-3(3263)9421 FAX. +81-3(3264)5565 E-mail: [planning-research@jpmac.or.jp](mailto:planning-research@jpmac.or.jp)

### Maritime Library

Kaiun Bldg. 9F, 2-6-4 Hirakawa-cho, Chiyoda-ku, Tokyo, 102-0093, Japan  
TEL. +81-3(3263)9422 FAX. +81-3(3265)5035 E-mail: [library@jpmac.or.jp](mailto:library@jpmac.or.jp)

URL: <http://www.jpmac.or.jp/english/>



## Introduction

The Japan Maritime Center (JMC), established in 2007 succeeding two maritime foundations, is a public interest incorporated foundation authorized by the Government.

JMC's activities consist of three key areas, such as research and policy proposals, administration of the Maritime Library and Project support program for various maritime related activities, in order to address the rapidly changing world economy and increasingly complicating maritime environment.

JMC's activities are mainly supported by financial contributions from the Japanese Shipowners' Association and the Japan Federation of Pilots' Associations. JMC is determined to contribute further to Japan's development as a maritime nation.



## Organization



## Missions

JMC's objectives as a major think tank in the maritime community are to contribute to:

- promotion of cooperation among maritime industry, administration and research institutes,
- development of maritime industry, essential to the Japanese economy and society,
- promotion of maritime public-interest projects,
- realization of maritime community with safety and security,
- realization of maritime community in harmony with the environment,
- and international activities of maritime community.

## Project Support Program

JMC offers grants to maritime public-interest projects carried out by such organizations as follows. (FY2015)

### ◆Maritime Law

- Japanese Maritime Law Association

### ◆Seafarers

- Seamen's Employment Center of Japan
- Maritime Academy Foundation
- The Association for promoting safety and sanitation for Seafarers
- The Maritime Human Resource Institute, Japan

### ◆Maritime Public Relation

- Japan Maritime Public Relation Center
- Japan Sea Cadet Federation

### ◆Pilot

- The Maritime Human Resource Institute, Japan

### ◆Maritime Safety

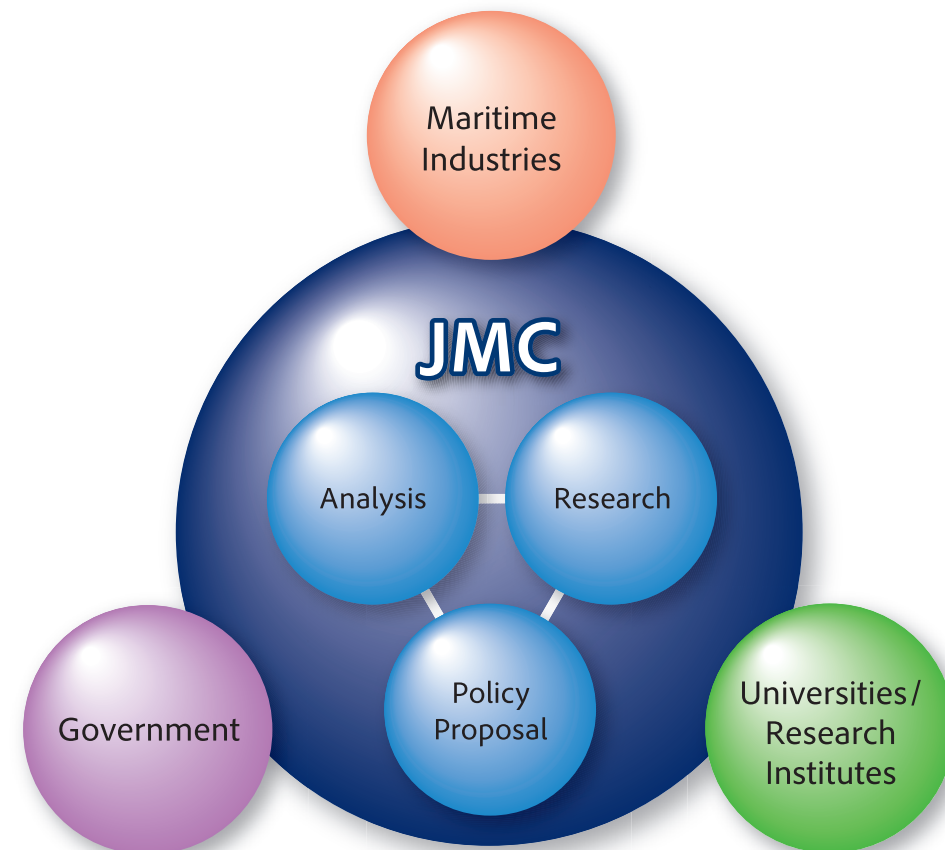
- The Japan Association of Marine Safety
- Tokyo wan Association for Marine Safety
- The Kobe Marine Casualty Prevention Institute
- The Seibu Association for Preventing Marine Casualty
- The Isewan Marine Safety Association
- The Japan Sea Marine Accidents Prevention Association
- Setonaikai Maritime Safety Association
- Japan Marine Rescue Association
- Marine Accident Inquiry and Safety Investigation Association
- Japan Coast Guard Association





## Activities on Research and Policy Proposals

### Acting as a Major Think Tank in the Maritime Community



### Research Activities through Research Committees

JMC sets up various Research Committees comprised of academics, industries and government for the research activities.

General Council on Planning Projects  
(Chairman : Professor Emeritus Seiichi Ochiai, the University of Tokyo)

Research Committees on

IMO Legal Committee

International Oil Pollution Compensation Funds

Issues on Maritime Economy

Issues on Seafarers

Issues on Marine Environment



Meeting of General Council on Planning Projects



### Main Study Themes

#### "Policy Measures for International Shipping Industry in Shipping Countries"

This study investigates various policy measures for international shipping in various countries, including the tonnage tax scheme, the tax deduction on seafarers' wages, international ship registry, and accelerated depreciation system.

#### "Significance and Needs of Shipping Industry in Japan"

This study reviews significance and needs of international shipping industry in Japan, aiming at contributing to the review of current policies and to future policy proposals, set forth by the initiative of the Japanese Shipowners' Association.

#### "Historical Analysis of the Economic Impact of Japanese Maritime Cluster"

This study estimates the economic value of Japanese maritime cluster and its historical changes by using Input-Output tables, revealing significance of maritime cluster in Japan.

#### "Seafarers Demand Forecast"

This study forecasts the seafarers demand taking into account of indicators on macroeconomic conditions.

#### "Maritime Education and Certification System in Foreign Countries"

This study investigates the MET system and Seafarer Certification system in foreign countries whose seafarers are engaged on board the Japanese merchant fleet.

#### "Development and Impact of SOx Regulation in International Shipping"

This study reviews the development of SOx regulation and aims to analyze its impact on international shipping industry.

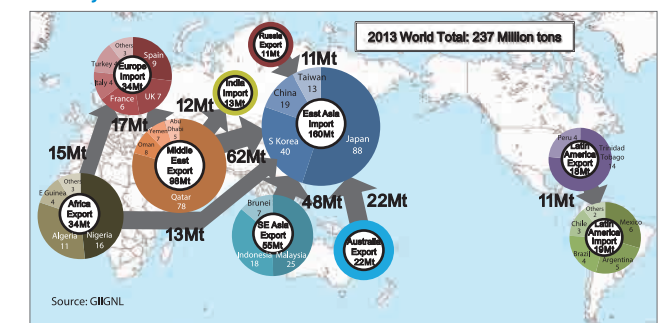
#### "Impact of the Panama Canal expansion"

This study investigates the impact of the Panama Canal expansion on the international logistics, through easing in capacity constraint or congestion, the new toll plan, changes in other routes (e.g. Suez Canal) and economic conditions (e.g. shale gas availability).

#### "Development of LNG trade"

This study reviews the market trend of LNG trade and aims to offer an outlook for the shipping industry.

##### ◆Major flow of LNG trade



#### "Bulk Cargo Containerization"

This study investigates the "bulk cargo containerization", diversifying transportation methods of bulk cargoes such as grains or metal scraps.

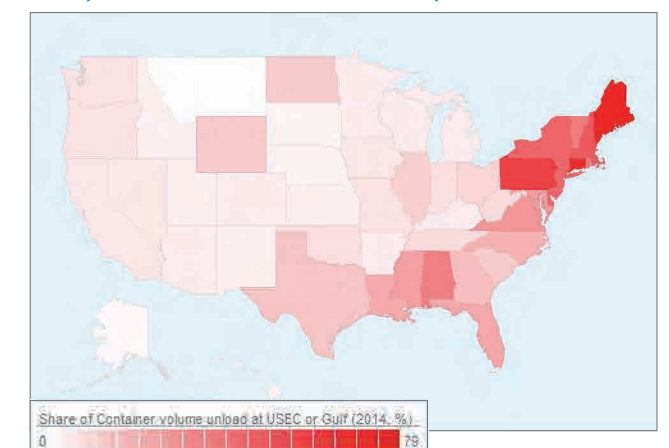
#### "Maritime Industries in Prefectures in Japan"

This study reviews maritime industries and their relationship with local economy in each prefecture.

#### "Public Sea Awareness Survey"

This survey has been conducted annually since 2008 and reveals the changes in public awareness on various Sea-related matters, providing useful information for the promotion of sea.

##### ◆Impact of the Panama Canal expansion







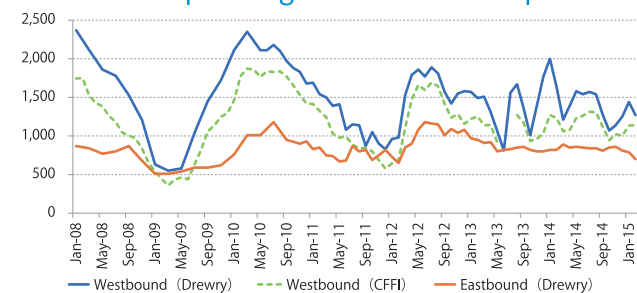
## Activities on Research and Policy Proposals



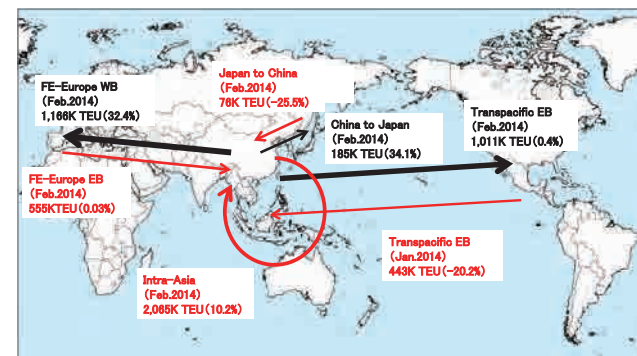
### Monthly Reports

JMC publishes monthly reports on major container trades (Asia-U.S., Asia-Europe and Intra-Asia), together with information on trades of major bulk cargoes such as iron-ore, coal and steels.

#### ◆ Container Spot Freight Rate for FE-Europe Route



#### ◆ Main Container Trades in the World



### Partnerships with WMU

JMC has renewed the "General Memorandum for Academic Cooperation" with the IMO's World Maritime University (WMU) in Malmö, Sweden, to be effective for another five years until December 2018 (first concluded in September 2008) to develop academic cooperation between the JMC and WMU in the field of maritime affairs.



Meeting with the Acting President of the WMU



### Forum

JMC holds the Japan Maritime Forum twice a year, featuring most recent topics.



The 16th Japan Maritime Forum on October 21, 2014



### International Meetings

JMC is represented in the following international meetings as a part of the Japanese delegation.

- ◆ IMO Legal Committee
- ◆ IMO Marine Environment Protection Committee
- ◆ ILO meetings
- ◆ IOPC Funds meetings



Main Hall of the IMO



## Maritime Library

Maritime Library, established in June 1974, is one of the major maritime libraries in Asia open to the public. JMC administrates the library, upgrading its functions, and enhancing user's convenience.

#### Collection (as of the end of March 2015)

Books	◆ Japanese : 29,096	◆ Foreign : 15,837
Periodicals	◆ Japanese : 610	◆ Foreign : 382

#### Main Items in the Collection

JMC collects reference books and key publications on maritime affairs ranging from the mid-19th century to the present.

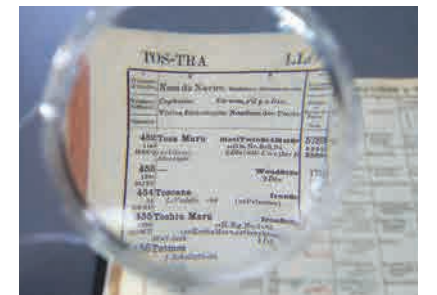
- Containerisation International (1977-)
- Containerisation International Yearbook (1972-2012)
- Fairplay (1884-)
- Lloyd's List (1961-)
- Lloyd's Register of Shipping, Register of Ships (1764-)
- Lloyd's Shipping Economist (1979-2009)
- Review (Fearnleys 1964-2008)
- Shipping Statistics Yearbook (Bremen 1966-)
- Nihon Senmeiroku (Japan Register of Ships) (1890-1998)

Online Journals related to Anglo-American Law are available free of charge.



Asian largest well-stocked library

Lloyd's Register



Reading room

The library provides an enquiry service by e-mail in English.  
Online Public Access Catalog (OPAC) is also available via JMC's Website.  
<http://www.jpmac.or.jp/english/>