



**THE KINGDOM OF TONGA**  
**NATIONAL EMERGENCY MANAGEMENT OFFICE**  
**NATIONAL EMERGENCY OPERATIONS CENTRE**

**SITUATION REPORT**

Event: **Hunga Tonga Hunga Ha'apai Volcanic Eruption**  
Sit Rep No: **10**  
Date: **24 January 2022**  
Period: **12pm Sat 22<sup>nd</sup> Jan 2022 – 11am Mon 24<sup>th</sup> Jan 2022**

This situation report released by the National Emergency Management Office (NEMO) is to inform operational partners on current situation of the secondary effects of the Hunga Tonga Hunga Ha'apai (HTHH) Volcanic eruption. This Situation report (Sitrep) covers the period stated above. Frequency of reports will depend on availability of new information and evolving operation.

**Highlights**

- As at 8.00am Sun 16 Jan 2022 Tonga was declared as a State of Emergency (SOE) for the Hunga Tonga Hunga Ha'apai volcanic eruption that triggered tsunami waves on Sat 15<sup>th</sup> Jan 2022
- This SOE commenced at Sunday 16 January 2022 to 8.00am Sunday 13 February 2022 and was announced on 19 Jan by the Prime Minister, Honourable Hu'akavameiliku.
- Lulunga residents (82) from Mango Island (63) and Nomuka (19) were evacuated to Tongatapu on Sat 20 Jan 2022, due to the significant damage and negative health impact from the tsunami.
- The Government of Tonga hosted a church service and provided a feast for the Mango Island residents upon arrival to Tongatapu.
- Tonga Red Cross distributed hygiene kits and the Australian High Commission staff kindly donated bags of clothing and snacks for the families upon arrival to Tongatapu on Sat 22 Jan.
- Safety & Protection Cluster (Tonga Family Health Association) providing psychosocial support to the evacuees.
- An order was issued and declared the following areas as no – go zones: 'Atata Island, Fafa Island, Kanokupolu, Makaha'a, Mango Island, Nukunuku Motu, Patangata.
- Two flights arrived with relief supplies on Sat 22 Jan, from New Zealand and Japan and scheduled for distribution on Wed 25 Jan 2022.
- Tonga National Youth Congress and MORDI Tonga established water stations in 7 communities, NEMO with the Town Officers established a further 9 community water stations.
- First flight to Nafanua Aiport was on Sat 22 Jan 2022, with Government officers, including Chief Secretary and Secretary to Cabinet.
- NEMO and MORDI Tonga accessed and delivered 248,000L of water from the HMNZS Aotearoa on Sat 22 Jan.
- The weekend of Sat 22 & Sun 23 Jan 2022, there were 98 calls to the NEOC, with urgent calls. The key requests were (1) food for an elderly person; (2) advising on household not included in distributions.

**Current situation**

- The HTHH volcanic eruption followed by the tsunami warning triggered an immediate evacuation of communities on 15<sup>th</sup> January 2022, particularly coastal communities.

- The National Emergency Operations Centre (NEOC) was activated on Fri 14<sup>th</sup> Jan 2022, due to a tsunami marine warning issued by Tonga Meteorological Services (Tonga Met).
- Tonga is under a State of Emergency for the HTHH volcanic eruption triggering tsunami waves, in addition to the State of Public Health Emergency (for the COVID19 global pandemic).
- Communities sought safety during the tsunami and further volcanic eruptions on the night of the 15<sup>th</sup> January 2022 at evacuation centres (church halls, community halls).
- Relief distribution continues to affected communities in Tongatapu, Ha'apai and 'Eua– water, hygiene kits, food, tents and tarpaulin, kitchen kits, dignity kits.

### **Cluster Response (ongoing efforts)**

1. The Logistics & Coordination Cluster (inc. First Responders (His Majesty's Armed Forces (HMAF), Tonga Police, Tonga Fire & Emergency Services) continue to support clearing efforts in the community, at schools and coordinate immediate relief distribution, with non-government and auxiliary organisations (NGOs).
  - Tonga Fire and Emergency Services continues to provide support to Tonga Power with personnel in keeping areas safe, as well as working in and with communities in their clean up efforts.
2. The Emergency Telecommunications Cluster continues to work to repair cable and communication between the islands; internet connectivity is available though limited.
3. The Safety & Protection Cluster is providing:
  - Ongoing psychosocial support to the relief distribution teams by Ministry of Internal Affairs (Cluster Lead agency)
  - established a counselling telephone line through the Council of Churches on 7580110.
  - Cluster members from NGO sector providing relief to affected communities.
4. Emergency Shelter & Non food items (NFI)
  - Distributing tents, tarpaulin, hygiene kits, kitchen kits to affected communities.
  - Working in partnership with Safety & Protection Cluster for distribution.
5. Shelter (Reconstruction Cluster) – conducted assessments on public buildings and wharves. Data to be shared with NEMO.
6. Essential Services Cluster – power is 90% on across Tongatapu; ongoing work in progress.
7. Health, Nutrition, Water, Sanitation & Hygiene (HNWASH) Cluster continue to spray communities.

### **Tongatapu (TBU) update**

- Arrival of the Mango and Nomuka Island residents who have evacuated to Tongatapu and currently based in a community hall.
- There were 14 households from Mango Island, with family size ranging from 3 – 7 members
- Details of Nomuka Island evacuees to be provided in next SitRep.
- NEMO with Town Officers have established 9 water stations at Kanokupolu, Sia'atoutai, Alonga Centre, Fua'amotu, Fatumu, Tatakamotonga, Vaotuu, Makapao and Halavave.
- TNYC and MORDI Tonga established 7 water stations in Matatoga, Houmalelikao, Havelu, Tofoa, Ahau, Ha'atafu and Kolovai.
- NEMO met with TNYC, MORDI Tonga and Local Government representatives, with an update from Tonga Red Cross, on distribution plans.
- TFES also responded to a house fire in Fangaloto, with support from Tonga Red Cross providing non food items, a water tank from M & J Water Tank Company and food rations from NEMO.

### **'Eua Update**

- The relief provisions to 'Eua consisted of 66 Rotary Emergency Response Kits; 136 Food rations; 47 tarpaulins and 8 sets of clothing distributed with the support of MORDI Tonga, to 56 households for 348 people.
- Hihifo District officer has requested 4 big chainsaws and 4 small chainsaws.

### **Ha'apai Update.**

- Stocks on board vessel *MV Late* and distributed to Lulunga and Mu'omu'a district residents were food packs (breakfast crackers, tinned fish, corned beef, sugar, and flour) and Water (from Tonga Red Cross and NEMO).

- First boat to Lifuka arrived today with the drum of benzene and diesel.

### Vava'u Update

- Vava'u has requested 2 cables, a turner and power supply.

### International Humanitarian Support

International humanitarian support to the Government of Tonga's response efforts with relief provided in the form of and from, noting that COVID19 protocols still apply with 72 hours quarantine prior to contactless dropoff and release

Donor	Description
Government of Japan	Provision of relief items - 1 flight arrived in Tonga on Sat 22 Jan
Australia Government	Provision of relief items - 3 flights arrived in Tonga on Thurs 20 and Fri 21 Jan
New Zealand Government	Provision of relief items
	HMNZS Wellington arrived in Tonga on Friday 20 Jan.
	HMNZS Aotearoa arrived in Tonga on Sat 21 Jan.
Chinese Embassy	Food packs provided for distribution

### Local Donations

Donor	Description
Australian High Commission staff	- Bags of clothing and snacks for evacuees.

### Background

The Hunga Tonga Hunga Ha'apai (HHTH) volcanic activity commenced on 20 December 2021 and was immediately heightened to red for aviation. Tonga Geological Services monitored the volcanic activity providing public health advice from 20 December 2021 until 2 January 2022. Environmental and public health warnings were provided about the potential of water contamination from the ash fall and potential of acid rain in Ha'apai. Advice included information on potential of fish poisoning due to volcanic fluid polluting the ocean and raising awareness on the hazardous areas surrounding the islands and ensuring the public kept clear of these areas. TGS continued to monitor HHTH and noted that there was no activity from 2<sup>nd</sup> January to 11<sup>th</sup> January 2022.

On 14<sup>th</sup> January 2022 TGS reissued an alert at 7am, following increased volcanic activity as Tongatapu and 'Eua communities were impacted by the smell of sulfur.

On 14<sup>th</sup> January 2022, Tonga Met issued a Tsunami Marine warning from the National Tsunami Warning Centre at 11.12am directly to the public. The warning was cancelled for Vava'u and Ongo Niua in the evening of Friday 14<sup>th</sup> Jan 2022 and for the remainder of Tonga on Sat 15<sup>th</sup> Jan 2022 in the morning.

On Sat 15<sup>th</sup> Jan 2022, at approx. 5.20pm, HHTH volcano erupted and created a significant impact across the Kingdom of Tonga. A tsunami was triggered with a mass evacuation response immediately declared to attempt to keep Tongan residents safe.

Based on the effects of the volcanic eruption with the ash fall and effects of the tsunami the affected population is approx. 84,776 (84% of population, Tongatapu, Ha'apai, 'Eua); with the impacted population – approx. 99,059 (99% Tongatapu, Ha'apai, 'Eua, Vava'u)<sup>1</sup>

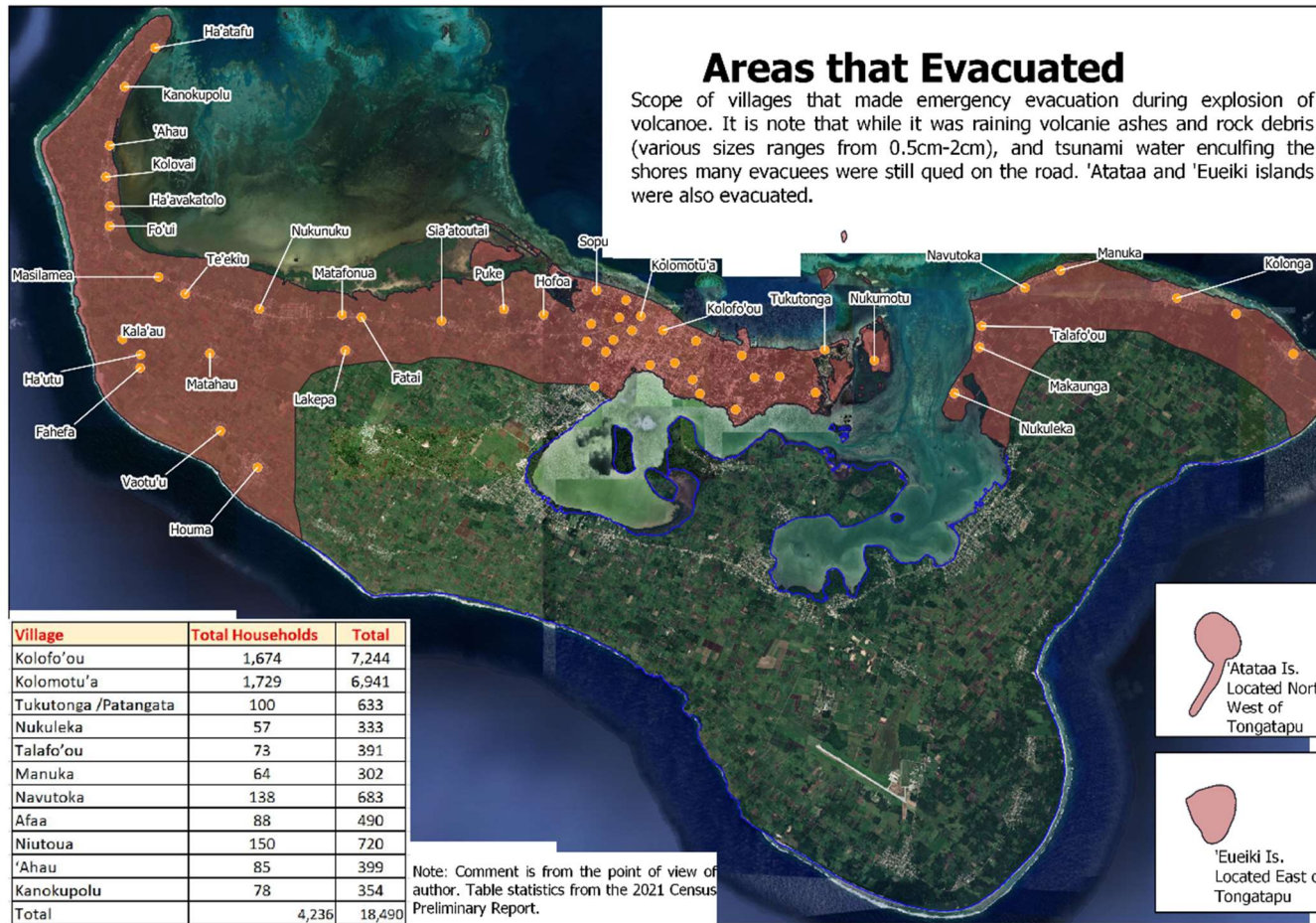
### Further updates

NEMO will provide the next SitRep at the next meeting or within 24 hours or as the situation may evolve, as determined by NEMC.

Key contact: Mr Paula Ma'u  
Chief Executive Officer  
Ministry of Meteorology, Energy, Information, Disaster Management, Environment, Communication and Climate Change (MEIDECC)  
Ph: 20148

<sup>1</sup> Based on Tonga Statistics Department, Tonga Population Census 2021. Preliminary Result

## 1. Map of coastal areas evacuated in Tongatapu





Maps of affected areas in Tongatapu and Ha'apai (Lulunga District)  
 2. Atata village



Produced by: Ministry of Lands and Natural Resources, Lands Geographic Information System Division.



### 3. Fonoifua village



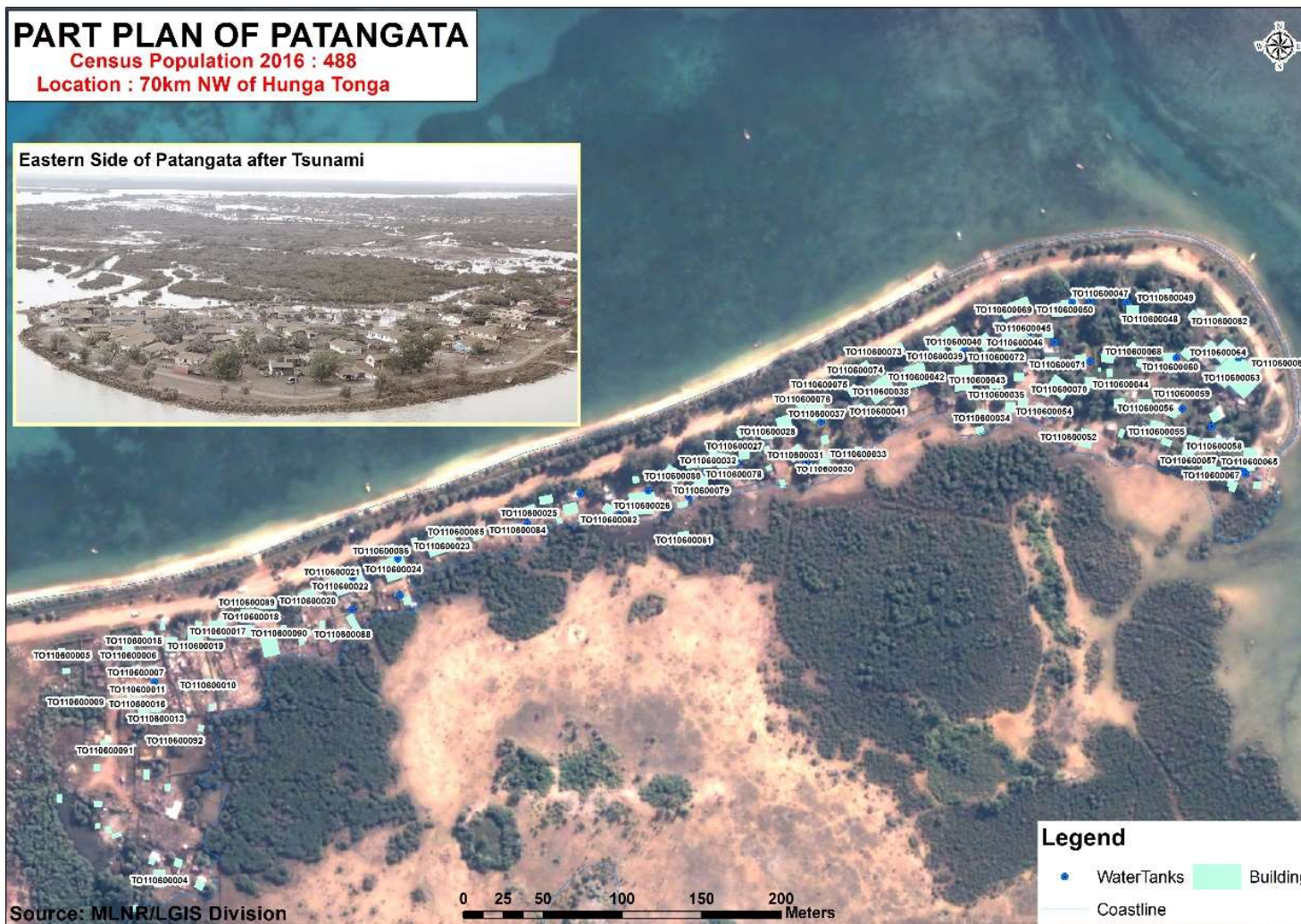
Produced by: Ministry of Lands and Natural Resources, Lands Geographic Information System Division.

#### 4. Patangata

### PART PLAN OF PATANGATA

Census Population 2016 : 488  
Location : 70km NW of Hunga Tonga

Eastern Side of Patangata after Tsunami



Produced by: Ministry of Lands and Natural Resources, Lands Geographic Information System Division.