

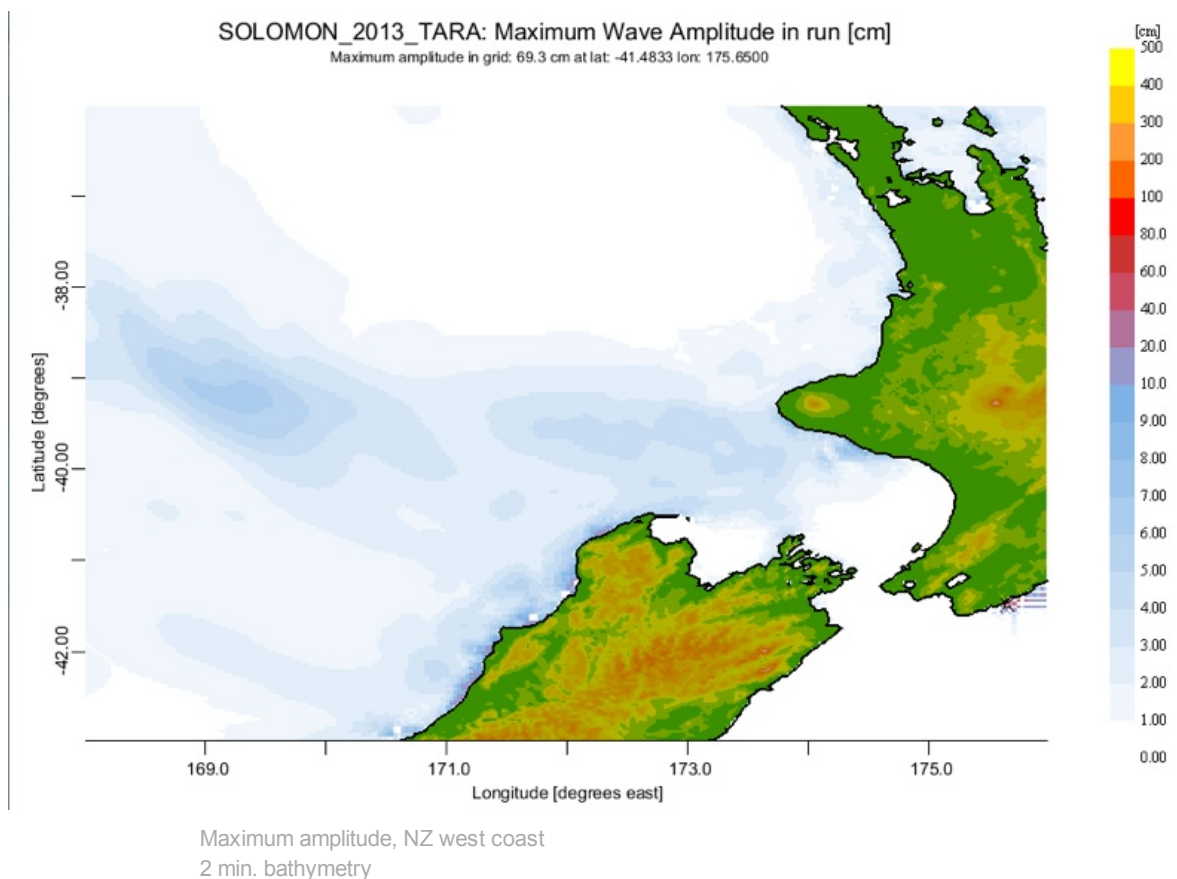
SOLOMON ISLANDS TSUNAMI ON THE WEST COAST OF NEW ZEALAND 6-FEBRUARY-2013

Jose C. Borrero, eCoast Ltd.



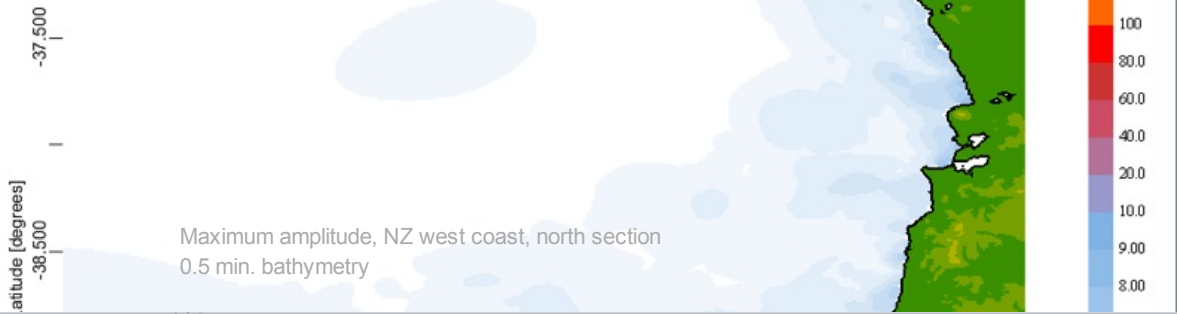
ComMIT model results

The ComMIT model was run using the DART constrained source mechanism provide through WebSIFT. Bathymetry was created 'on the fly' from the GEBCO 0.5 m global data set and interpolated to the grid resolutions specified below. The modeling focused on New Plymouth, Westport and Greymouth.



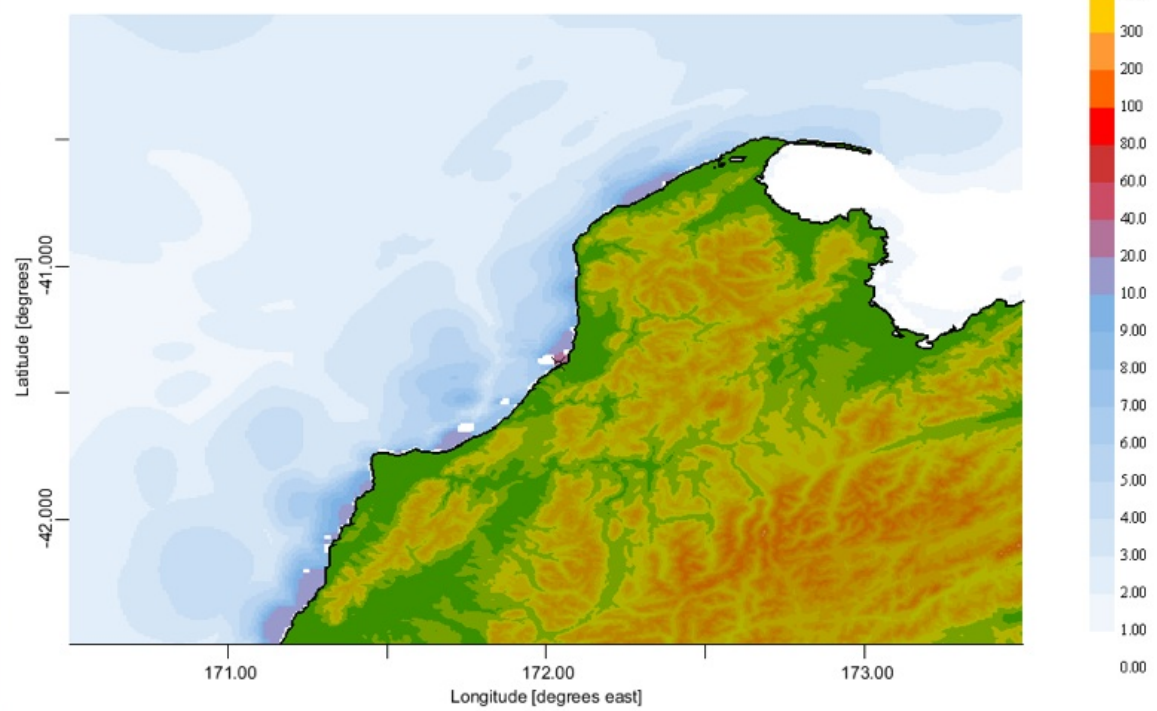
SOLOMON_2013_TARA: Maximum Wave Amplitude in run [cm]

Maximum amplitude in grid: 17.8 cm at lat: -39.6792 lon: 174.3542



SOLOMON_2013_WPT: Maximum Wave Amplitude in run [cm]

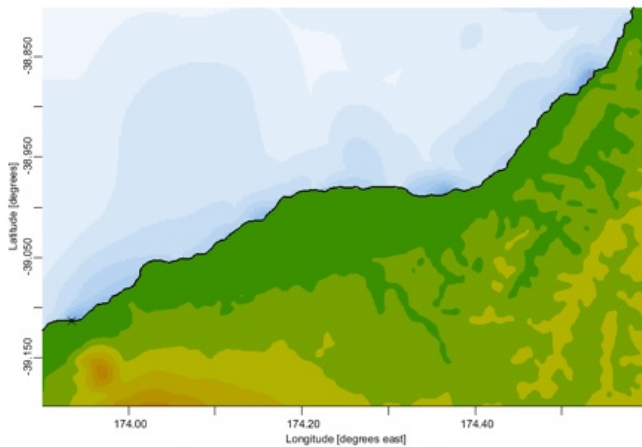
Maximum amplitude in grid: 26.2 cm at lat: -41.3875 lon: 172.0375



Maximum amplitude, NZ west coast, south section
0.5 min. bathymetry

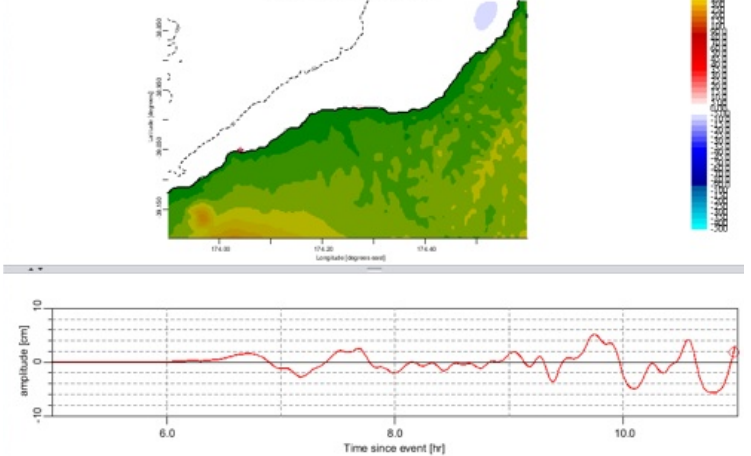
SOLOMON_2013_TARA: Maximum Wave Amplitude in run [cm]

Maximum amplitude in grid: 11.0 cm at lat: -39.1135 lon: 173.9344

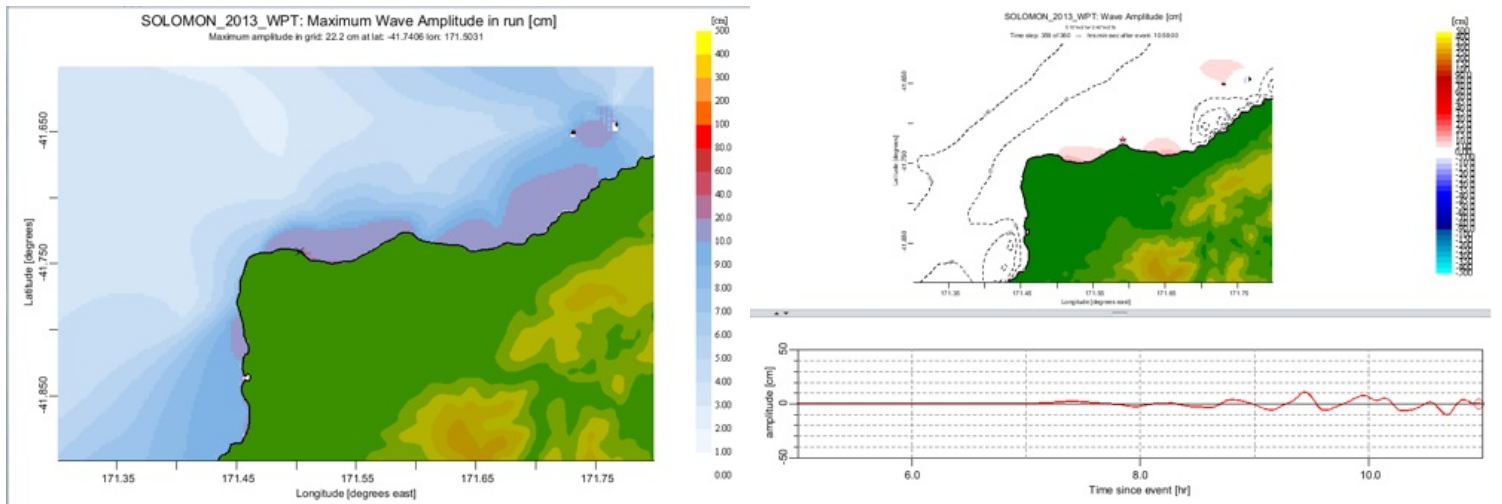


SOLOMON_2013_TARA Wave Amplitude [cm]

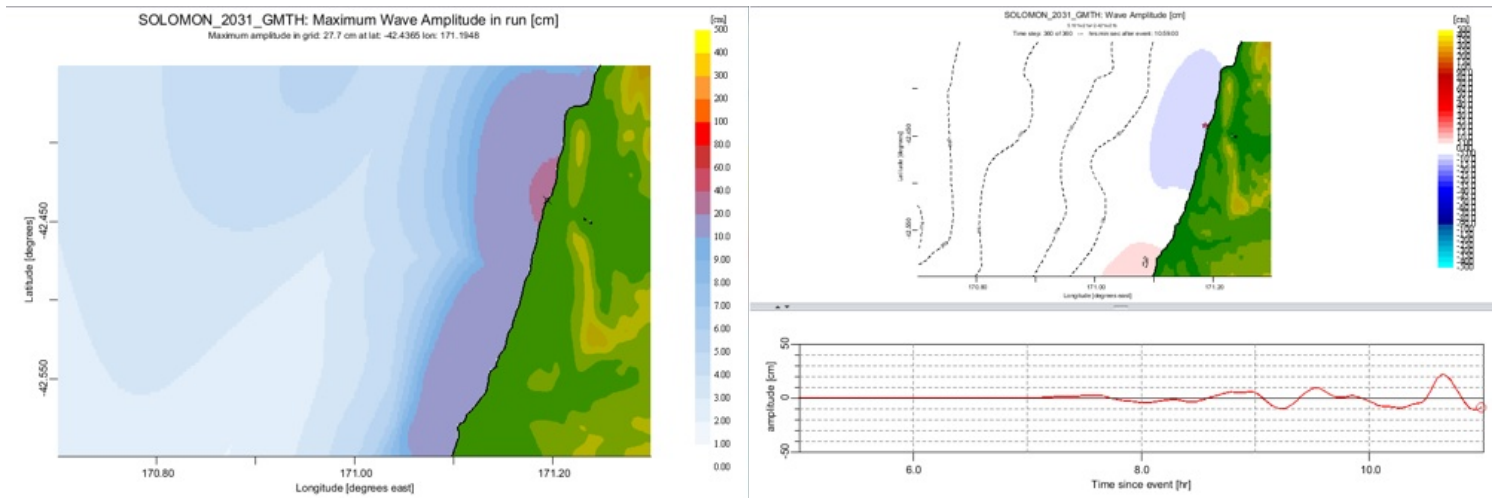
Time step: 300 of 300 - Wavelets after event: 10.0000



Maximum amplitude and timeseries, NZ west coast, Taranaki area
0.125 min. bathymetry



Maximum amplitude and timeseries, NZ west coast, Westport area
0.125 min. bathymetry



Maximum amplitude and timeseries, NZ west coast, Greymouth area
0.125 min. bathymetry