

# TSUNAMI

## WHAT IS A TSUNAMI?



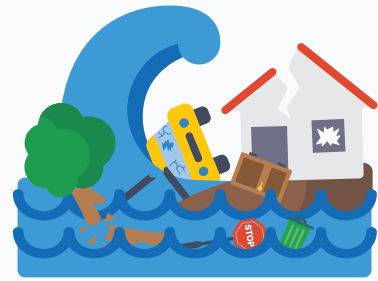
A series of ocean waves caused by an earthquake, landslide or volcanic eruption. Waves can be 10 metres or higher.

## WHEN DOES IT OCCUR?



Anytime and anywhere, and if local, can attack in minutes. You cannot outrun a tsunami.

## WHAT IS ITS IMPACT?



Floods coastal areas devastating homes, contaminating soil, killing coral, and flattening landscapes.

## SIGNS OF A TSUNAMI

### FEEL



Strong or long earthquake: the ground shaking severely

### SEE



Unusual disappearance of ocean water or oncoming wall of water

### HEAR



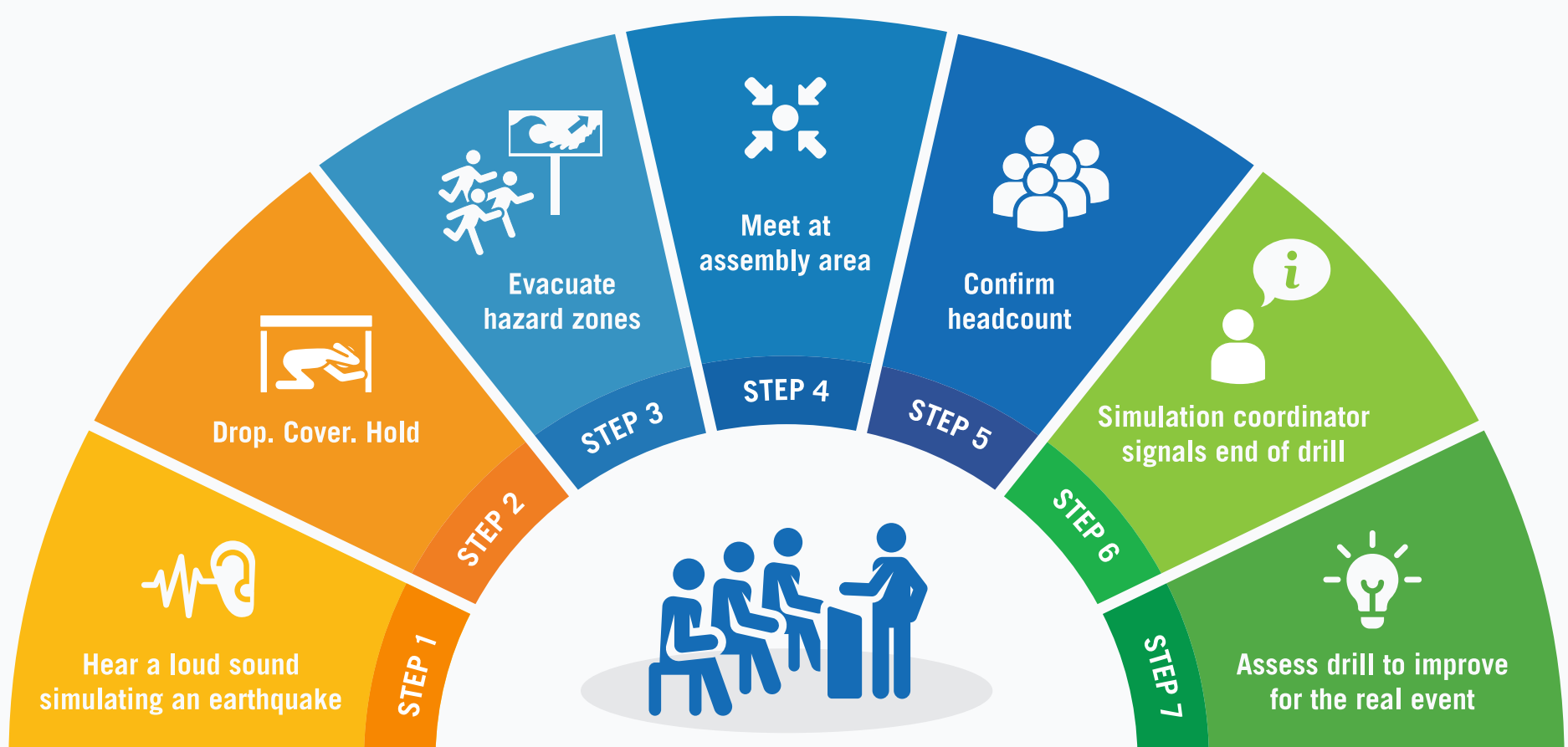
A loud roar, similar to that of a train or airplane

### RUN



Leave the coastal area, move to higher ground or inland

## TSUNAMI EVACUATION DRILL



Source: COPECO HONDURAS, IOTIC, ITIC, LIPI