


739000.000 Coordinates JAD2001 Jamaica Grid, 102095 740000.000 741000.000


640500.000
639500.000
Coordinates JAD2001 Jamaica Grid, 102095
638500.000

17.910 Coordinates WGS84, 4326
17.900



Old Harbor Bay, 2021 Tsunami Inundation


Scale: 1:7000

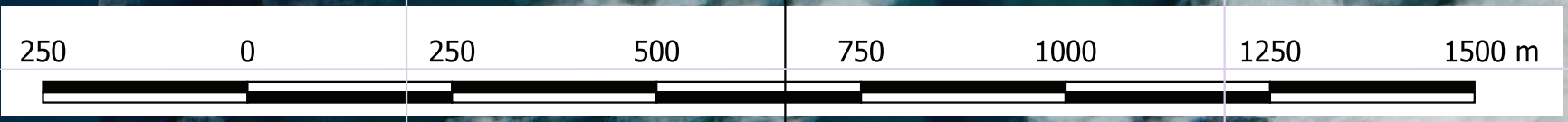
 Flood area

Google satellite image
Date: February 26, 2021

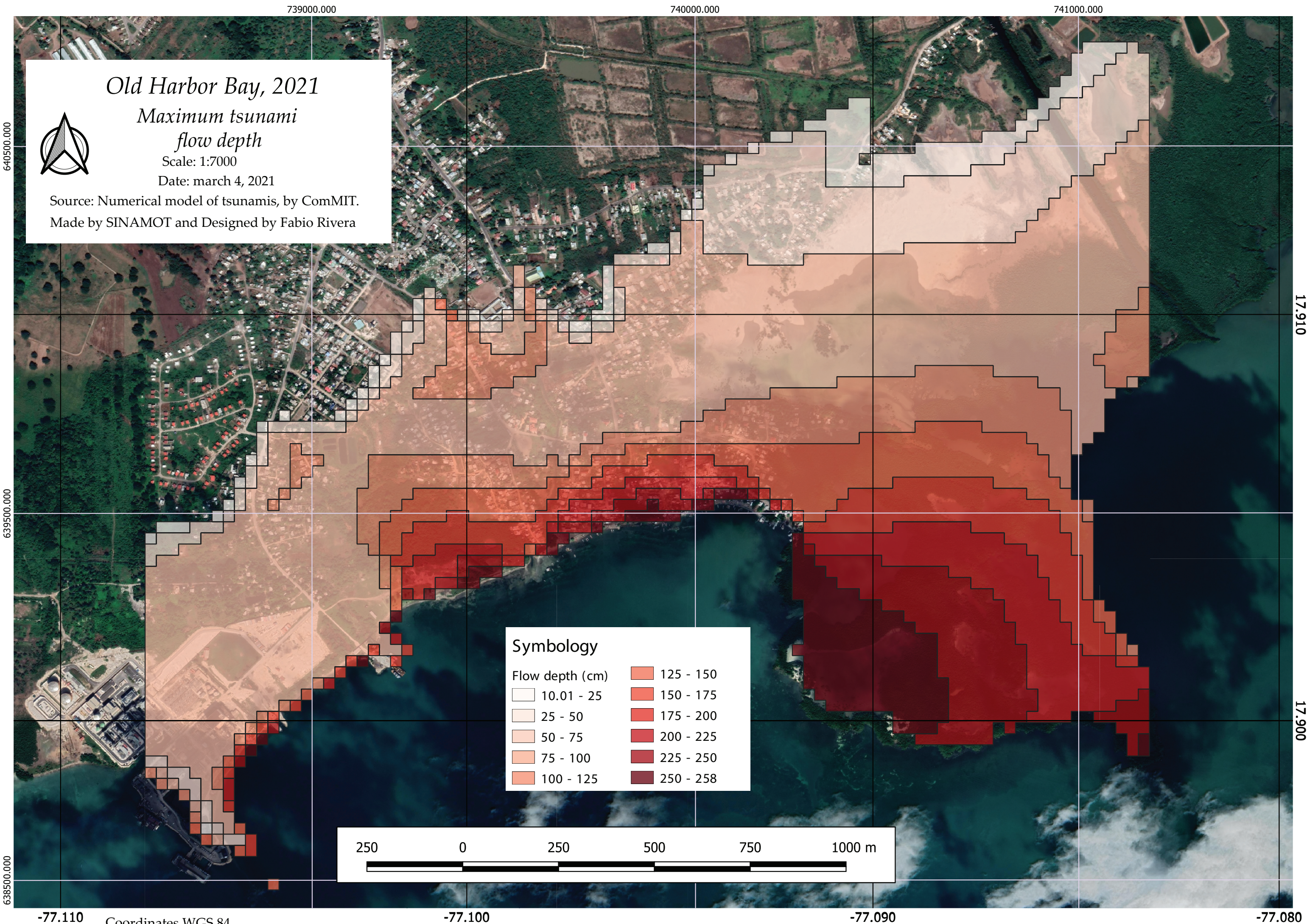
Source: Numerical model of tsunamis, by ComMIT.
Made by SINAMOT and Designed by Fabio Rivera

Location diagram Old Harbor Town





-77.110 Coordinates WGS84, 4326 -77.100 -77.090 -77.080



Old Harbor Bay, 2021

Maximum tsunami flow depth

Scale: 1:7000

Date: march 4, 2021

Source: Numerical model of tsunamis, by ComMIT.

Made by SINAMOT and Designed by Fabio Rivera

Symbology

Flow depth (cm)

10.01 - 25

25 - 50

50 - 75

75 - 100

100 - 125

125 - 150

150 - 175

175 - 200

200 - 225

225 - 250

250 - 258

250

0

250

500

750

1000 m

-77.110

Coordinates WGS 84

-77.100

-77.090

-77.080

17.910

17.900