



“This is an unprecedented disaster....”

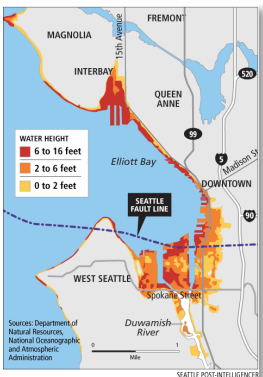
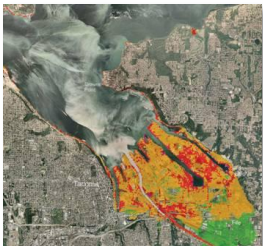
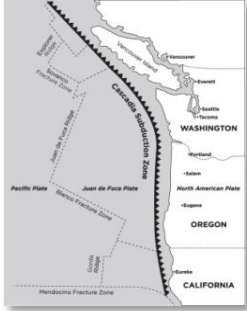


Tsunami Awareness Course

July 30, 2010

Camp Murray Building 91 8:30 am – 4:30 pm

This course enhances the participants' abilities to support their organizations' tsunami preparedness and response efforts.



It provides participants with an understanding of:

- The unique tsunami hazards
- Current hazard assessment tools and products
- Tsunami warning and dissemination systems and methods
- Response to local and distant tsunamis

The course covers tsunami response responsibility in both public and private sectors including government/public decision makers, emergency managers, response personnel, planners, and others. Participants will apply this knowledge in facilitated scenario-based group activities. Lunch will be provided (working lunch). A limited number of hotels rooms will be provided on July 29 for those traveling more than 50 miles.

Name: _____

Agency: _____

Title: _____

Email: _____

Click to submit registration by email s.christensen@emd.wa.gov or print form and fax to Stefani Christensen, 253-512-7206. Email questions to s.christensen@emd.wa.gov or call 253-512-7046.