

## 25 OCTOBER 2010 MENTAWAI, INDONESIA TSUNAMI

USGS: 14:42:22 UTC, 3.484°S, 100.114°E Depth 20.6 km Magnitude 7.7

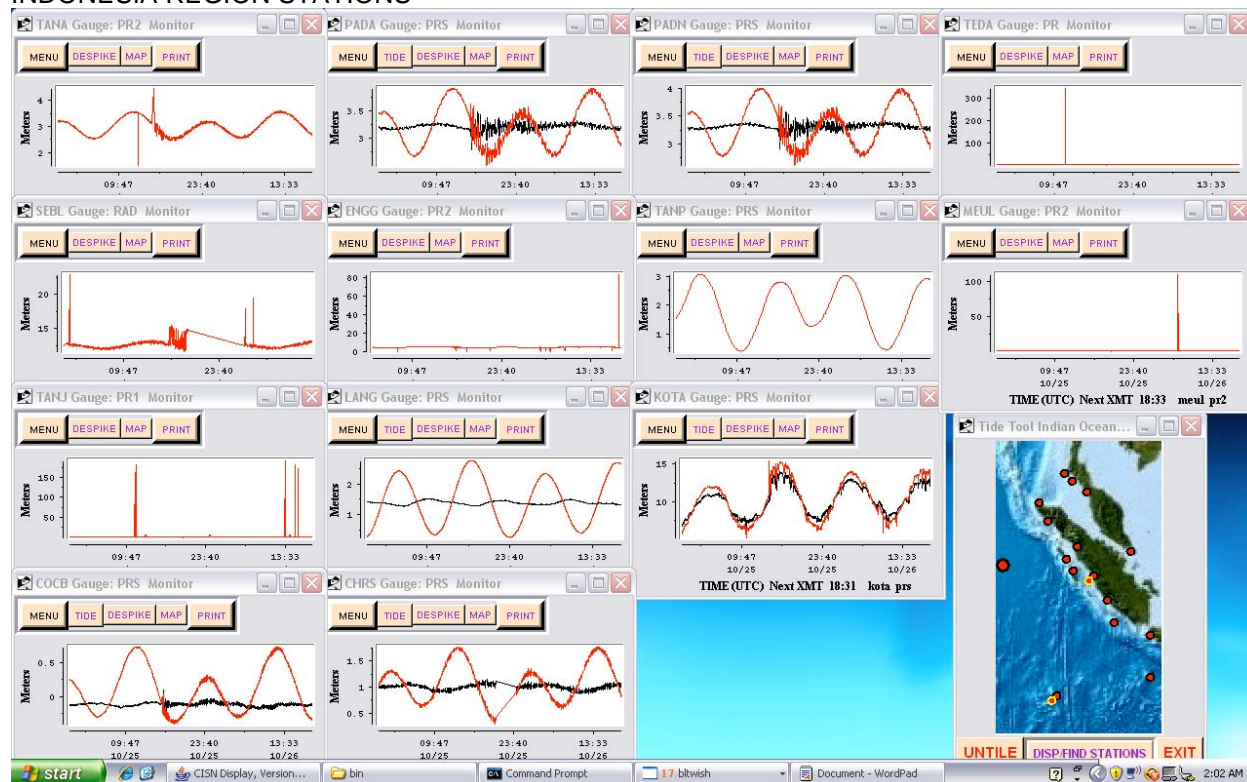
<http://ioc3.unesco.org/itic/contents.php?id=673>

## INDIAN OCEAN COASTAL SEA LEVEL STATION RECORDS

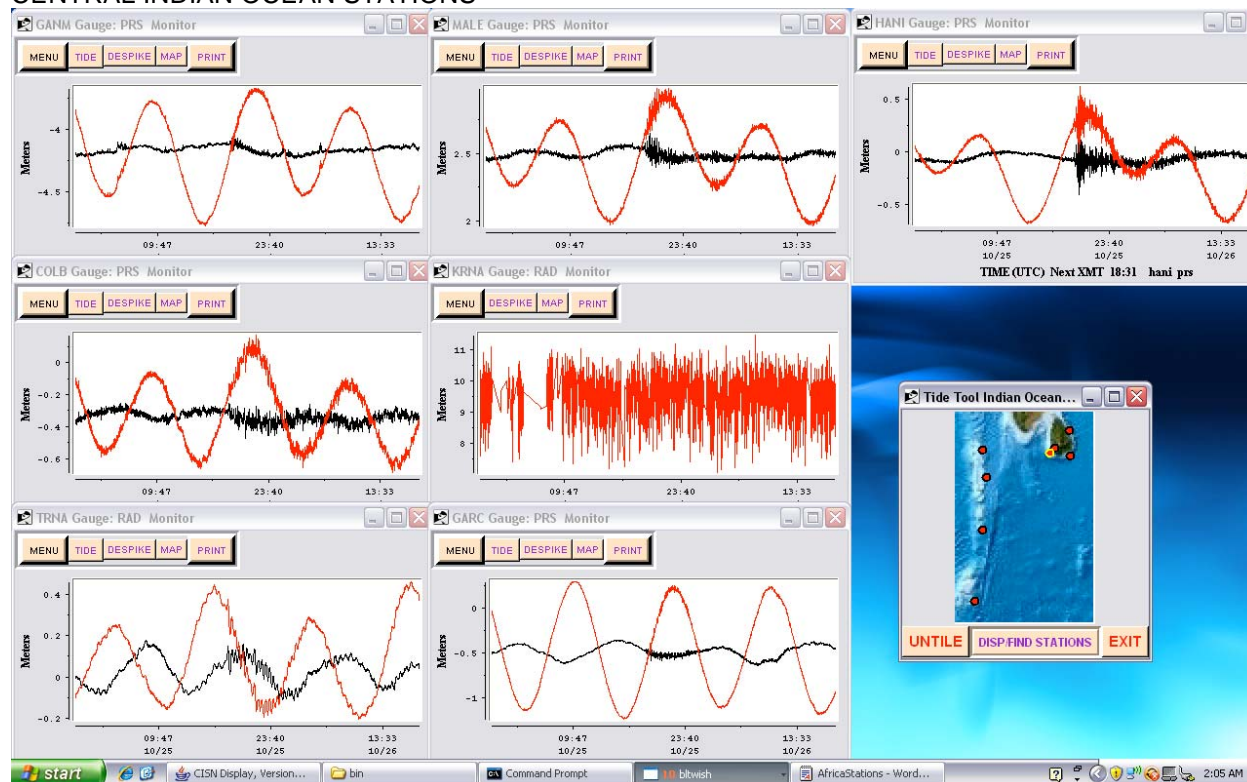
USING DATA AVAILABLE TO PTWC, DECODED AND DISPLAYED BY TIDETOOL, V8.11

Complied by UNESCO/IOC-NOAA ITIC ([itic.tsunami@unesco.org](mailto:itic.tsunami@unesco.org))

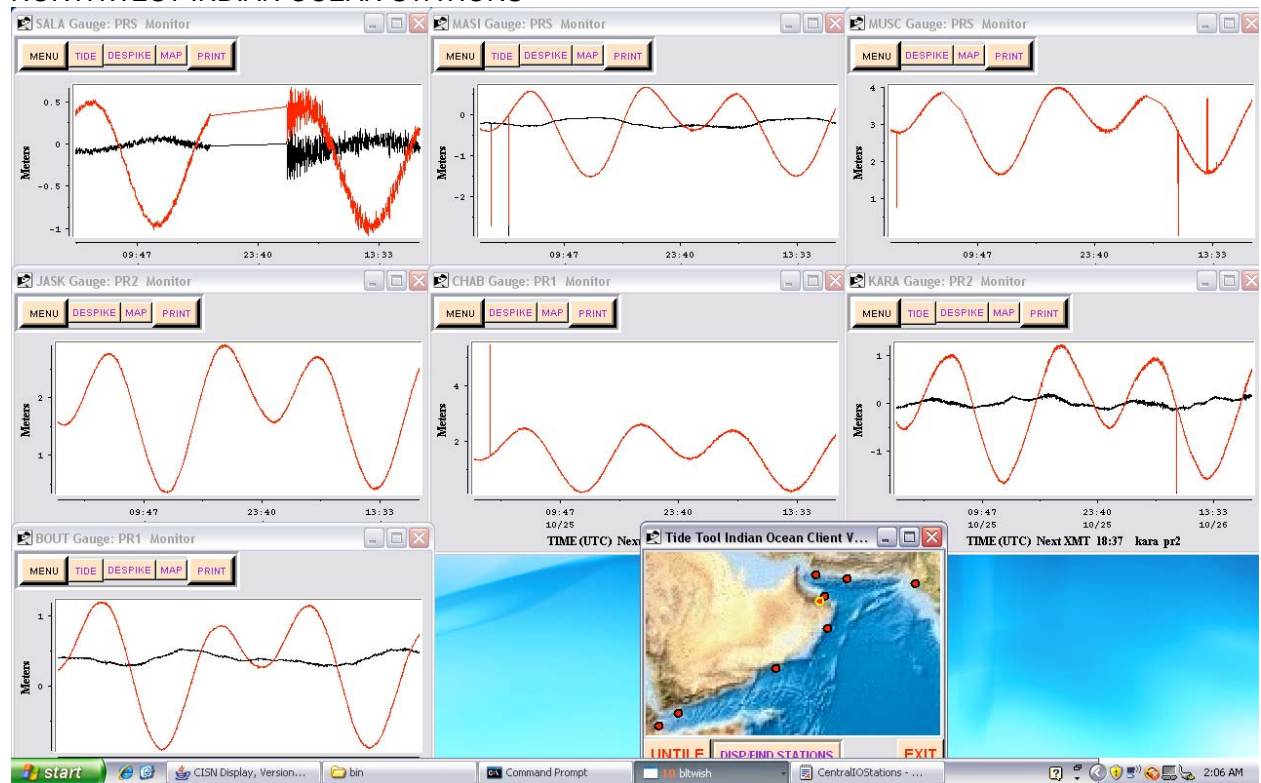
### INDONESIA REGION STATIONS



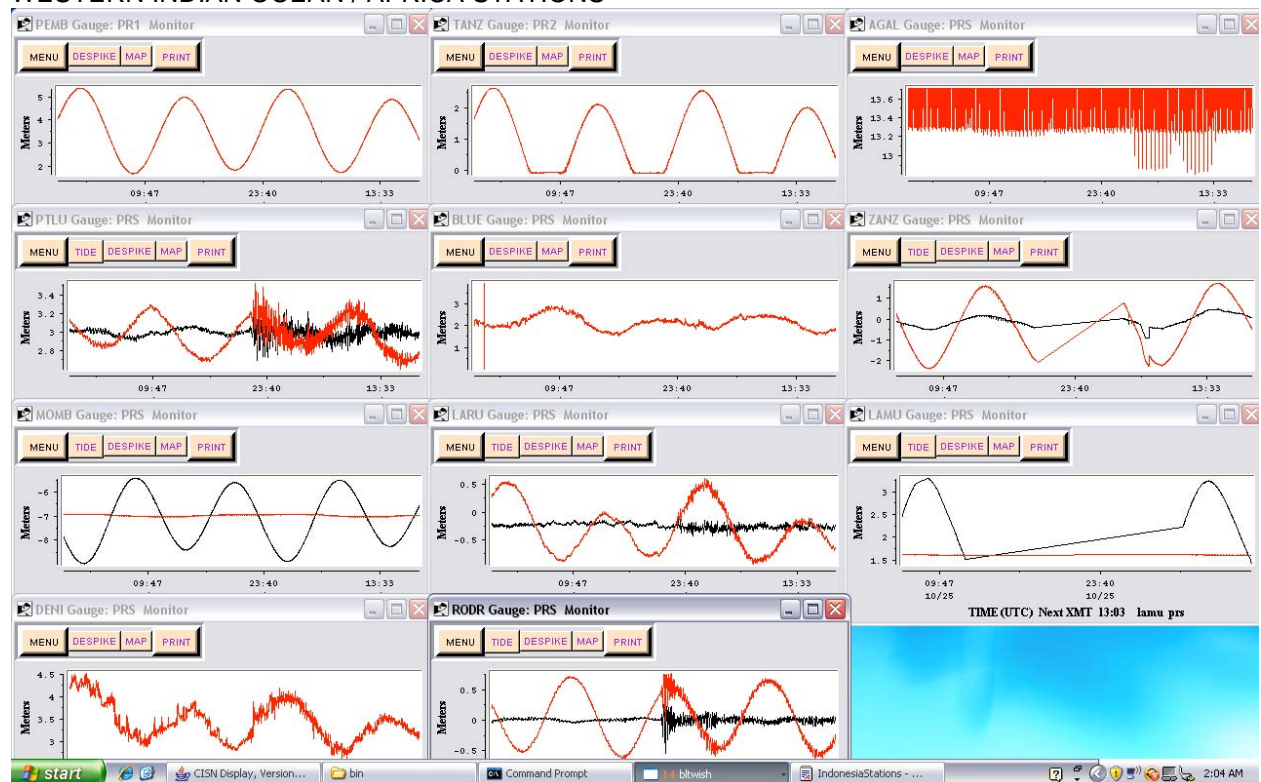
### CENTRAL INDIAN OCEAN STATIONS



## NORTHWEST INDIAN OCEAN STATIONS



## WESTERN INDIAN OCEAN / AFRICA STATIONS



## TSUNAMI WAVE MEASUREMENTS

### REPORTED BY PTWC THROUGH TSUNAMI BULLETIN BOARD (25 October 2010)

From: **Stuart A. Weinstein** <stuart.weinstein@noaa.gov>

Date: Mon, Oct 25, 2010 at 6:41 PM HST

Subject: Sea-Level Obs for Mentawai Earthquake 14:42 UTC Mw=7.7

To: ITIC Tsunami Bulletin Board <tsunami\_bb@infolist.nws.noaa.gov>

#### ITIC Tsunami Bulletin Board

Station	hh:mm Arrival Time/Date	Zero-2-Peak	Peak-2-Peak	mm:ss Period	hh:mm Measurement Time	LAT	LONG
Rodrigue Mauritius	20:34 10/25	0.260m	0.797	12:30	21:00 10/25	-19.6803	63.4215
Port Luis Mauritius	21:47 10/25	0.236m	0.558	15:30	22:27 10/25	-20.1573	57.5041
Cocos Island Australia	16:05 10/25	0.200m	0.326	5:30	16:23 10/25	-12.1167	96.8919
Enggano Indonesia	15:19 10/25	0.220m	0.510	9:00	15:25 10/25	-5.3461	102.2781
Padang Indonesia	15:40 10/25	0.380m	0.660	14:30	15:51 10/25	-0.9500	100.3661
Tanahbalah Indonesia	15:39 10/25	0.253m	0.460	16:20	16:05 10/25	-0.5326	98.4977
Telukdalam Indonesia	16:10 10/25	0.135m	0.215	14:45	16:36 10/25	0.5542	97.8222
Hillarys Harbor Australia	19:45 10/25	0.080m	0.153	18:30	00:08 10/26	-31.8255	115.7386
DART 56001 (West Java)	16:40? 10/25	~0.007m	~0.020	17:30	16:46 10/25	-13.9614	110.0039
Diego Garcia UK	18:40 10/25	0.060m	0.130	5:00	19:22 10/25	-7.2963	72.3941
Gan Maldives	18:41 10/25	0.005m	0.105	6:00	19:02 10/25	-0.6869	73.1500
Pt. LaRue Seychelles	22:34 10/25	0.132m	0.240	12:00	23:04 10/25	-4.6717	55.5283
Male Maldives	18:54 10/25	0.080m	0.210	5:00	19:31 10/25	4.19	73.5267
Hanimaadhoo Maldives	19:07 10/25	0.286m	0.620	6:30	19:59 10/25	6.7667	73.1667
Colombo Sri Lanka	18:41 10/25	0.090m	0.185	17:30	20:34 10/25	6.9483	79.8533
Trincommalee Sri Lanka	18:31 10/25	0.070m	0.136	30:00	18:21 10/25	8.5637	81.1996

### REPORTED BY JMA THROUGH JMA TSUNAMI WATCH INFORMATION MESSAGE No 6 (26 October 2010)

Time:	Elapsed	JMA TWI	Observed tsunami (time, amplitude):
01:00	Time	No 6	Padang 15:43 0.3 m
26 Oct	10:18		Cocos 16:20 0.2 m
			Hanimaadhoo 20:00 0.3 m
			Rodrigues 21:00 0.4 m
			Port Louis 23:10 0.3 m