

May 22, 1960, M9.5 Chile earthquake

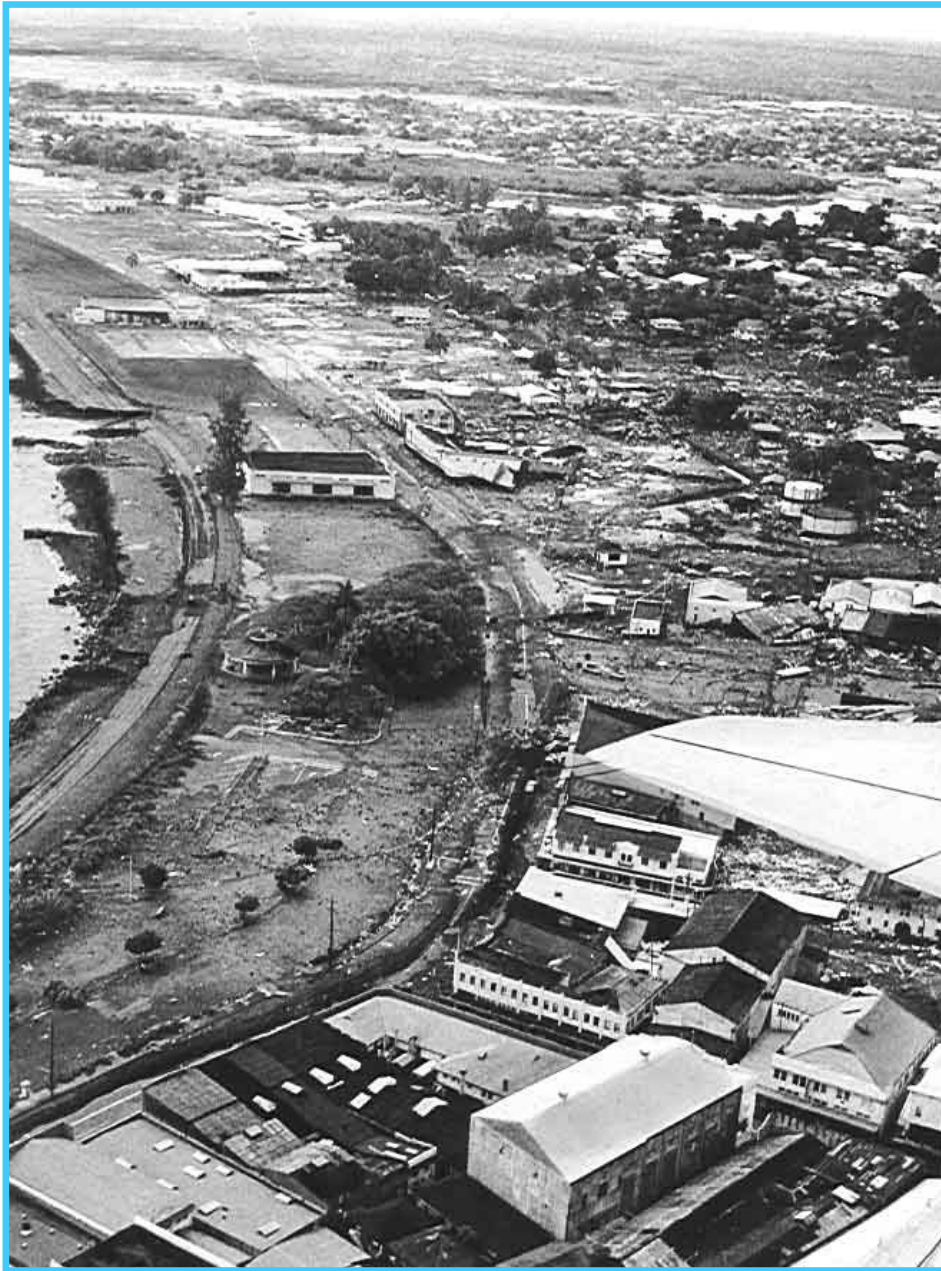


Photo credit: A. Yamauchi, Honolulu Star-Bulletin

Aerial View, Hilo Business District. Total destruction of Hilo Business district. Business firms and houses formerly crowded the mauka side of Kamehameha Avenue (vertically through picture center). Landmarks still standing (makai side) are the circular bandshell (middle), County Recreation Building (former warehouse), and Hilo theatre. The hard hit Mamo Street area is located above the tip of the airplane wing.



International Tsunami Information Center
Honolulu, HI 96822 USA
E-mail: itic.tsunami@noaa.gov
URL: <http://www.prh.noaa.gov/itic/>

